


Anti-NMDAR2A (phospho Y1325) antibody ab106590

★★★★★ [1 Abreviews](#) [3 References](#) [2 图像](#)

概述

产品名称	Anti-NMDAR2A (phospho Y1325)抗体
描述	兔多克隆抗体to NMDAR2A (phospho Y1325)
宿主	Rabbit
特异性	Specific for the ~180k NMDAR2A protein phosphorylated at Tyr1325 in Western blots. Immunolabelling is completely blocked by preadsorption with the phosphopeptide but not by the corresponding dephosphopeptide.
经测试应用	适用于: WB
种属反应性	与反应: Mouse, Rat 预测可用于: Cow, Dog 
免疫原	Synthetic peptide corresponding to NMDAR2A (C terminal). Database link: Q12879
阳性对照	Rat hippocampal lysate
常规说明	<p>The Life Science industry has been in the grips of a reproducibility crisis for a number of years. Abcam is leading the way in addressing this with our range of recombinant monoclonal antibodies and knockout edited cell lines for gold-standard validation. Please check that this product meets your needs before purchasing.</p> <p>If you have any questions, special requirements or concerns, please send us an inquiry and/or contact our Support team ahead of purchase. Recommended alternatives for this product can be found below, along with publications, customer reviews and Q&As</p>

性能

形式	Liquid
存放说明	Shipped at 4°C. Upon delivery aliquot and store at -20°C. Avoid freeze / thaw cycles.
存储溶液	pH: 7.50 Constituents: 0.01% BSA, 50% Glycerol, 0.87% Sodium chloride, 0.238% HEPES
纯度	Protein A purified
纯化说明	Prepared from rabbit serum by affinity purification via sequential chromatography on phospho- and dephospho-peptide affinity columns.
克隆	多克隆

同种型IgG

应用

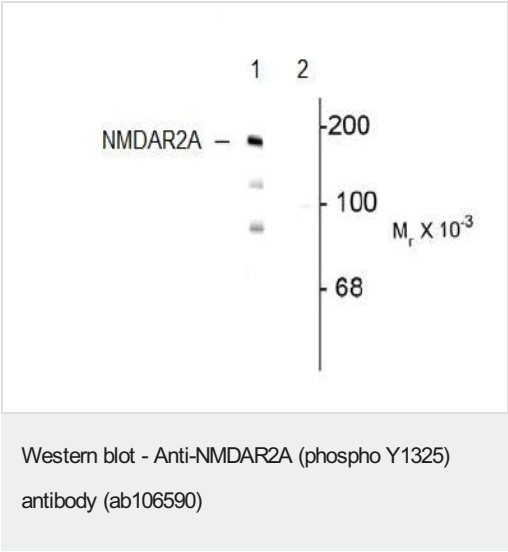
The Abpromise guarantee **Abpromise™**承诺保证使用ab106590于以下的经测试应用
“应用说明”部分 下显示的仅为推荐的起始稀释度;实际最佳的稀释度/浓度应由使用者检定。

应用	Ab评论	说明
WB	★★★★☆ (1)	1/1000. Predicted molecular weight: 165 kDa.

靶标

功能	NMDA receptor subtype of glutamate-gated ion channels possesses high calcium permeability and voltage-dependent sensitivity to magnesium. Activation requires binding of agonist to both types of subunits.
序列相似性	Belongs to the glutamate-gated ion channel (TC 1.A.10.1) family. NR2A/GRIN2A subfamily.
细胞定位	Cell membrane. Cell junction > synapse > postsynaptic cell membrane.

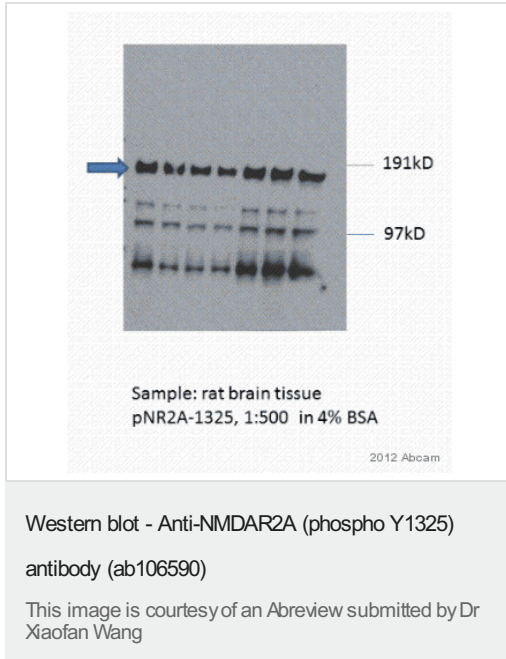
图片



All lanes : Anti-NMDAR2A (phospho Y1325) antibody (ab106590)
at 1/1000 dilution

Lane 1 : Rat hippocampal lysate
Lane 2 : Rat hippocampal lysate with preadsorption with the phospho-peptide

Predicted band size: 165 kDa
Observed band size: ~180 kDa



All lanes : Anti-NMDAR2A (phospho Y1325) antibody (ab106590) at 1/500 dilution

All lanes : Rat brain whole tissue lysate

Lysates/proteins at 20 µg per lane.

Secondary

All lanes : HRP Goat anti-rabbit IgG polyclonal at 1/2000 dilution

Developed using the ECL technique.

Performed under reducing conditions.

Predicted band size: 165 kDa

Observed band size: 180 kDa

Exposure time: 1 minute

Please note: All products are "FOR RESEARCH USE ONLY. NOT FOR USE IN DIAGNOSTIC PROCEDURES"

Our Abpromise to you: Quality guaranteed and expert technical support

- Replacement or refund for products not performing as stated on the datasheet
- Valid for 12 months from date of delivery
- Response to your inquiry within 24 hours
- We provide support in Chinese, English, French, German, Japanese and Spanish
- Extensive multi-media technical resources to help you
- We investigate all quality concerns to ensure our products perform to the highest standards

If the product does not perform as described on this datasheet, we will offer a refund or replacement. For full details of the Abpromise, please visit <https://www.abcam.cn/abpromise> or contact our technical team.

Terms and conditions

- Guarantee only valid for products bought direct from Abcam or one of our authorized distributors