

Anti-NLRX1 antibody ab105412

3 References **3 图像**

概述

产品名称	Anti-NLRX1抗体
描述	兔多克隆抗体to NLRX1
宿主	Rabbit
特异性	At least two isoforms of NLRX1 are known to exist; ab105412 will recognize both. This antibody is predicted to not crossreact with other NLRP family members.
经测试应用	适用于: ICC/IF, WB, IHC-P
种属反应性	与反应: Rat
免疫原	A 14 amino acid peptide near the amino terminus of Human NLRX1 (NP_078894).
阳性对照	Rat spleen tissue lysate
常规说明	<p>The Life Science industry has been in the grips of a reproducibility crisis for a number of years. Abcam is leading the way in addressing this with our range of recombinant monoclonal antibodies and knockout edited cell lines for gold-standard validation. Please check that this product meets your needs before purchasing.</p> <p>If you have any questions, special requirements or concerns, please send us an inquiry and/or contact our Support team ahead of purchase. Recommended alternatives for this product can be found below, along with publications, customer reviews and Q&As</p>

性能

形式	Liquid
存放说明	Shipped at 4°C. Store at +4°C.
存储溶液	<p>pH: 7.2</p> <p>Preservative: 0.02% Sodium azide</p> <p>Constituent: PBS</p>
纯度	Immunogen affinity purified
克隆	多克隆
同种型	IgG

应用

The Abpromise guarantee

Abpromise™承诺保证使用ab105412于以下的经测试应用

“应用说明”部分 下显示的仅为推荐的起始稀释度;实际最佳的稀释度/浓度应由使用者检定。

应用	Ab评论	说明
ICC/IF		Use a concentration of 20 µg/ml.
WB		Use a concentration of 1 - 2 µg/ml. Predicted molecular weight: 108 kDa.
IHC-P		Use a concentration of 10 µg/ml.

靶标

功能

Participates in antiviral signaling. Acts as a negative regulator of MAVS-mediated antiviral responses, through the inhibition of the virus-induced RLH (RIG-like helicase)-MAVS interaction (PubMed:18200010). Has no inhibitory function on NF-Kappa-B and type 1 interferon signaling pathways, but enhances NF-Kappa-B and JUN N-terminal kinase dependent signaling through the production of reactive oxygen species (PubMed:18219313).

组织特异性

Ubiquitously expressed. Strongest expression in mammary gland, heart and muscle. Detected in HELA, 293T, THP-1, HL60, RAJI, and JURKAT cell lines (at protein level).

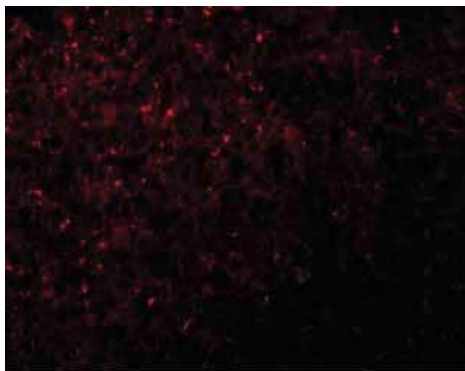
序列相似性

Belongs to the NLRP family.
Contains 7 LRR (leucine-rich) repeats.
Contains 1 NACHT domain.

细胞定位

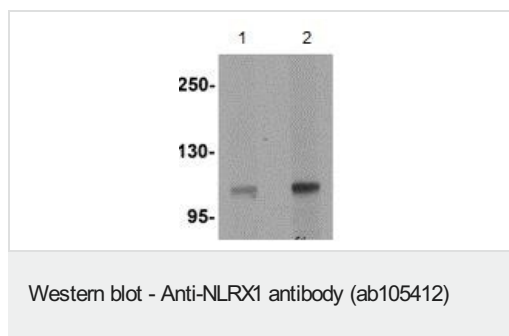
Mitochondrion outer membrane.

图片



Immunofluorescence of NLRX1 in rat spleen tissue with ab105412 at 20 ug/mL.

Immunocytochemistry/ Immunofluorescence - Anti-NLRX1 antibody (ab105412)

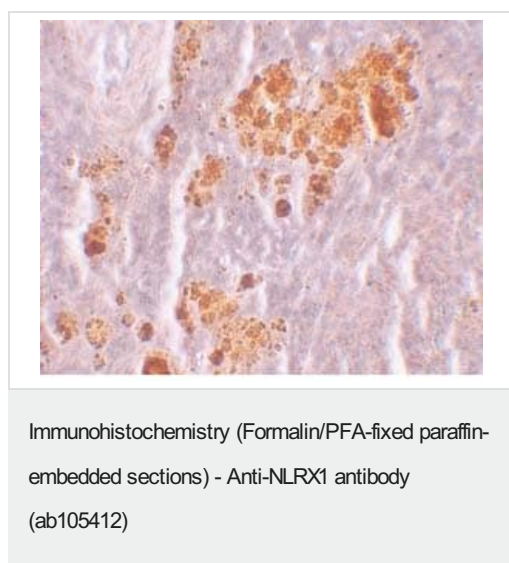


Lane 1 : Anti-NLRX1 antibody (ab105412) at 1 µg/ml

Lane 2 : Anti-NLRX1 antibody (ab105412) at 2 µg/ml

All lanes : rat spleen tissue cell lysate

Predicted band size: 108 kDa



Immunohistochemistry of NLRX1 in rat spleen tissue with ab105412 at 10 µg/ml.

Please note: All products are "FOR RESEARCH USE ONLY. NOT FOR USE IN DIAGNOSTIC PROCEDURES"

Our Abpromise to you: Quality guaranteed and expert technical support

- Replacement or refund for products not performing as stated on the datasheet
- Valid for 12 months from date of delivery
- Response to your inquiry within 24 hours
- We provide support in Chinese, English, French, German, Japanese and Spanish
- Extensive multi-media technical resources to help you
- We investigate all quality concerns to ensure our products perform to the highest standards

If the product does not perform as described on this datasheet, we will offer a refund or replacement. For full details of the Abpromise, please visit <https://www.abcam.cn/abpromise> or contact our technical team.

Terms and conditions

- Guarantee only valid for products bought direct from Abcam or one of our authorized distributors