


Anti-NKG2D antibody ab36136

[3 References](#) [2 图像](#)

概述

产品名称	Anti-NKG2D抗体
描述	山羊多克隆抗体to NKG2D
宿主	Goat
经测试应用	适用于: WB, Flow Cyt
种属反应性	与反应: Human 预测可用于: Mouse, Rat 
免疫原	Synthetic peptide: KVYSKEDQDLLK , corresponding to Internal sequence amino acids 136-147 of Human NKG2D Run BLAST with Run BLAST with
阳性对照	WB: MOLT4 whole cell lysate. Flow Cyt: Human peripheral blood monocytes
常规说明	<p>The Life Science industry has been in the grips of a reproducibility crisis for a number of years. Abcam is leading the way in addressing this with our range of recombinant monoclonal antibodies and knockout edited cell lines for gold-standard validation. Please check that this product meets your needs before purchasing.</p> <p>If you have any questions, special requirements or concerns, please send us an inquiry and/or contact our Support team ahead of purchase. Recommended alternatives for this product can be found below, along with publications, customer reviews and Q&As</p>

性能

形式	Liquid
存放说明	Shipped at 4°C. Upon delivery aliquot and store at -20°C or -80°C. Avoid repeated freeze / thaw cycles.
存储溶液	pH: 7.30 Preservative: 0.02% Sodium azide Constituents: 0.5% BSA, 99% Tris buffered saline
纯度	Immunogen affinity purified
纯化说明	Purified from goat serum by ammonium sulphate precipitation followed by antigen affinity chromatography using the immunizing peptide.

克隆 多克隆
同种型 IgG

应用

The Abpromise guarantee **Abpromise™** 承诺保证使用ab36136于以下的经测试应用

“应用说明”部分 下显示的仅为推荐的起始稀释度;实际最佳的稀释度/浓度应由使用者检定。

应用	Ab评论	说明
WB		Use a concentration of 0.1 - 0.3 µg/ml. Detects a band of approximately 35 kDa (predicted molecular weight: 25.3 kDa). 1 hour primary incubation is recommended for this product.
Flow Cyt		Use a concentration of 10 µg/ml.

靶标

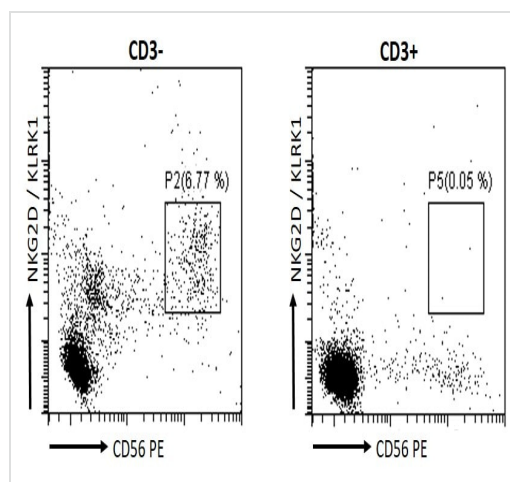
功能 Receptor for MICA, MICB, ULBP1, ULBP2, ULBP3 (ULBP2>ULBP1>ULBP3) and ULBP4. Plays a role as a receptor for the recognition of MHC class I HLA-E molecules by NK cells and some cytotoxic T-cells. Involved in the immune surveillance exerted by T- and B-lymphocytes.

组织特异性 Natural killer cells. Expressed on essentially all CD56+CD3- NK cells from freshly isolated PBMC. Also detected in gamma-delta cells and CD8+ alpha-beta T-cells. Expressed in interferon-producing killer dendritic cells (IKDCs).

序列相似性 Contains 1 C-type lectin domain.

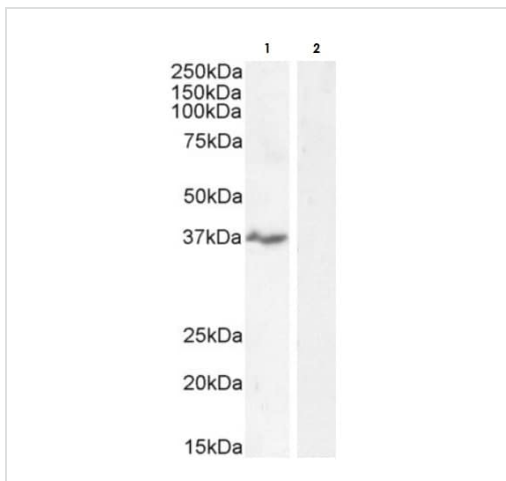
细胞定位 Membrane.

图片



Flow cytometric analysis of human peripheral blood monocytes. Primary incubation 30 minutes (10µg/mL) followed by Alexa Fluor 488 secondary antibody (1µg/mL).

Flow Cytometry - Anti-NKG2D antibody (ab36136)



Western blot - Anti-NKG2D antibody (ab36136)

All lanes : Anti-NKG2D antibody (ab36136) at 0.5 µg/ml

Lane 1 : MOLT-4 (Human lymphoblastic leukemia cell line) whole cell lysate

Lane 2 : MOLT-4 whole cell lysate plus peptide

Lysates/proteins at 35 µg per lane.

Predicted band size: 25.3 kDa

Lysates in RIPA buffer.

Detected by chemiluminescence.

Please note: All products are "FOR RESEARCH USE ONLY. NOT FOR USE IN DIAGNOSTIC PROCEDURES"

Our Abpromise to you: Quality guaranteed and expert technical support

- Replacement or refund for products not performing as stated on the datasheet
- Valid for 12 months from date of delivery
- Response to your inquiry within 24 hours
- We provide support in Chinese, English, French, German, Japanese and Spanish
- Extensive multi-media technical resources to help you
- We investigate all quality concerns to ensure our products perform to the highest standards

If the product does not perform as described on this datasheet, we will offer a refund or replacement. For full details of the Abpromise, please visit <https://www.abcam.cn/abpromise> or contact our technical team.

Terms and conditions

- Guarantee only valid for products bought direct from Abcam or one of our authorized distributors