

# Anti-NKF3 kinase family member/PEAK1 antibody ab121865

## 2 图像

### 概述

<b>产品名称</b>	Anti-NKF3 kinase family member/PEAK1抗体
<b>描述</b>	兔多克隆抗体to NKF3 kinase family member/PEAK1
<b>宿主</b>	Rabbit
<b>经测试应用</b>	<b>适用于:</b> IHC-P, ICC/IF
<b>种属反应性</b>	<b>与反应:</b> Human
<b>免疫原</b>	Recombinant fragment corresponding to Human NKF3 kinase family member/PEAK1 aa 81-166. Sequence:  DGQSICGELSIQEHCEKPKVIIGWNRNRAALSQKPLNNNNED DEGISHVP KPYGNNSAKKMSDNNGLTEVLKEIAGLDTAPQIR  <a href="#">Run BLAST with</a> <a href="#">Run BLAST with</a>
<b>阳性对照</b>	Human stomach tissue.
<b>常规说明</b>	<p>The Life Science industry has been in the grips of a reproducibility crisis for a number of years. Abcam is leading the way in addressing this with our range of recombinant monoclonal antibodies and knockout edited cell lines for gold-standard validation. Please check that this product meets your needs before purchasing.</p> <p>If you have any questions, special requirements or concerns, please send us an inquiry and/or contact our Support team ahead of purchase. Recommended alternatives for this product can be found below, along with publications, customer reviews and Q&amp;As</p>

### 性能

<b>形式</b>	Liquid
<b>存放说明</b>	Shipped at 4°C. Upon delivery aliquot and store at -20°C. Avoid freeze / thaw cycles.
<b>存储溶液</b>	pH: 7.20 Preservative: 0.02% Sodium azide Constituents: 59% PBS, 40% Glycerol (glycerin, glycerine)
<b>纯度</b>	Immunogen affinity purified
<b>克隆</b>	多克隆
<b>同种型</b>	IgG

## 应用

**The Abpromise guarantee**      **Abpromise™**承诺保证使用ab121865于以下的经测试应用

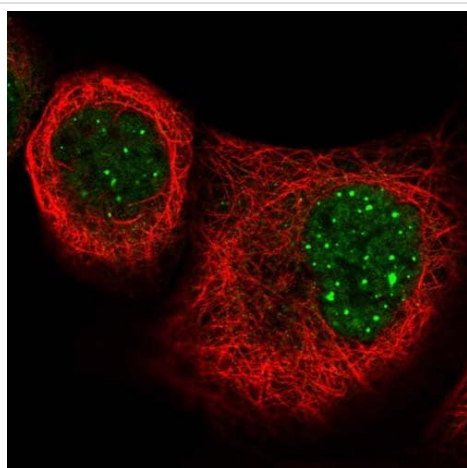
“应用说明”部分 下显示的仅为推荐的起始稀释度;实际最佳的稀释度/浓度应由使用者检定。

应用	Ab评论	说明
IHC-P		1/10 - 1/20. Perform heat mediated antigen retrieval with citrate buffer pH 6 before commencing with IHC staining protocol.
ICC/IF		Use a concentration of 1 - 4 µg/ml. Recommend PFA Fixation and Triton X-100 treatment

## 靶标

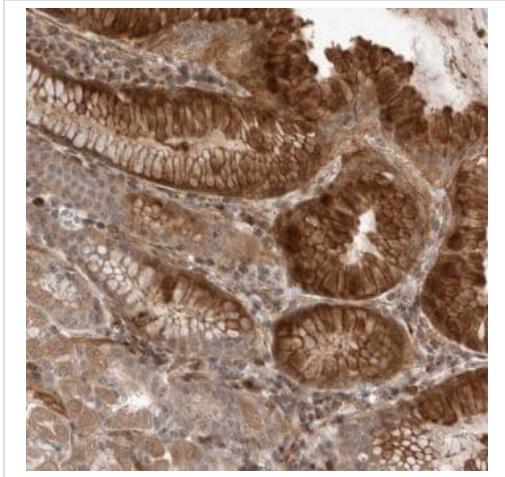
<b>功能</b>	Tyrosine kinase that may play a role in cell spreading and migration on fibronectin. May directly or indirectly affect phosphorylation levels of cytoskeleton-associated proteins MAPK1/ERK and PXN.
<b>序列相似性</b>	Belongs to the protein kinase superfamily. Contains 1 protein kinase domain.
<b>翻译后修饰</b>	Phosphorylated on tyrosine in a CSK-dependent manner in response to adhesion to fibronectin and to EGF stimulation. Autophosphorylated in vitro.
<b>细胞定位</b>	Cytoplasm > cytoskeleton. Cell junction > focal adhesion. Colocalizes with F-actin in serum-rich medium. Actin colocalization is reduced during serum starvation.

## 图片



Immunofluorescent staining of Human cell line A-431 shows positivity in nucleus but not nucleoli and cytoplasm. Recommended concentration of ab121865 1-4 µg/ml. Cells treated with PFA/Triton X-100.

Immunocytochemistry/ Immunofluorescence - Anti-NKF3 kinase family member/PEAK1 antibody (ab121865)



ab121865, at a 1/10 dilution, staining NKF3 kinase family member/PEAK1 in glandular cells of paraffin-embedded Human stomach tissue by immunohistochemistry.

Immunohistochemistry (Formalin/PFA-fixed paraffin-embedded sections) - Anti-NKF3 kinase family member/PEAK1 antibody (ab121865)

**Please note:** All products are "FOR RESEARCH USE ONLY. NOT FOR USE IN DIAGNOSTIC PROCEDURES"

#### **Our Abpromise to you: Quality guaranteed and expert technical support**

---

- Replacement or refund for products not performing as stated on the datasheet
- Valid for 12 months from date of delivery
- Response to your inquiry within 24 hours
  
- We provide support in Chinese, English, French, German, Japanese and Spanish
- Extensive multi-media technical resources to help you
- We investigate all quality concerns to ensure our products perform to the highest standards

If the product does not perform as described on this datasheet, we will offer a refund or replacement. For full details of the Abpromise, please visit <https://www.abcam.cn/abpromise> or contact our technical team.

#### **Terms and conditions**

---

- Guarantee only valid for products bought direct from Abcam or one of our authorized distributors