




Anti-NIPP1 antibody ab5300

1 References 1 图像

概述	
产品名称	Anti-NIPP1抗体
描述	山羊多克隆抗体to NIPP1
宿主	Goat
经测试应用	适用于: IHC-P, WB
种属反应性	与反应: Mouse, Human 预测可用于: Rat, Cow, Dog 
免疫原	Synthetic peptide corresponding to Human NIPP1 aa 114-127 (C terminal). Sequence: C-EAWPGKKPTPSLLI (Peptide available as ab23096) <div> Run BLAST with  Run BLAST with</div>
阳性对照	WB: HeLa, HepG2, Jurkat and NIH3T3 nuclear lysates. IHC-P: Human thymus tissue.
常规说明	<p>This gene, through alternative splicing, encodes three different isoforms. Two of the protein isoforms encoded by this gene are specific inhibitors of type 1 serine/threonine protein phosphatases and can bind but not cleave RNA. The third protein isoform lacks the phosphatase inhibitory function but is a single-strand endoribonuclease comparable to RNase E of E. coli. This isoform requires magnesium for its function and cleaves specific sites in A+U-rich regions of RNA.</p> <p>The Life Science industry has been in the grips of a reproducibility crisis for a number of years. Abcam is leading the way in addressing this with our range of recombinant monoclonal antibodies and knockout edited cell lines for gold-standard validation. Please check that this product meets your needs before purchasing.</p> <p>If you have any questions, special requirements or concerns, please send us an inquiry and/or contact our Support team ahead of purchase. Recommended alternatives for this product can be found below, along with publications, customer reviews and Q&As</p>

性能	
形式	Liquid

存放说明	Shipped at 4°C. Upon delivery aliquot and store at -20°C or -80°C. Avoid repeated freeze / thaw cycles.
存储溶液	pH: 7.30 Preservative: 0.02% Sodium azide Constituents: 0.5% Tris buffered saline, 0.5% BSA
纯度	Immunogen affinity purified
纯化说明	Purified from goat serum by ammonium sulphate precipitation followed by antigen affinity chromatography using the immunizing peptide.
Primary antibody说明	This gene, through alternative splicing, encodes three different isoforms. Two of the protein isoforms encoded by this gene are specific inhibitors of type 1 serine/threonine protein phosphatases and can bind but not cleave RNA. The third protein isoform lacks the phosphatase inhibitory function but is a single-strand endoribonuclease comparable to RNase E of E. coli. This isoform requires magnesium for its function and cleaves specific sites in A+U-rich regions of RNA.
克隆	多克隆
同种型	IgG

应用

The Abpromise guarantee **Abpromise™**承诺保证使用ab5300于以下的经测试应用

“应用说明”部分 下显示的仅为推荐的起始稀释度;实际最佳的稀释度/浓度应由使用者检定。

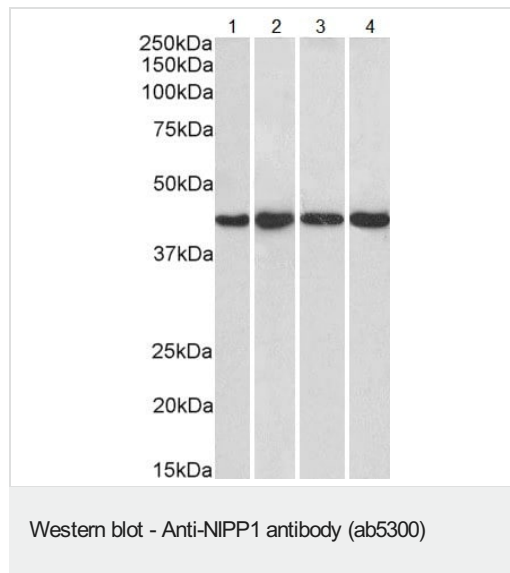
应用	Ab评论	说明
IHC-P		Use a concentration of 2.5 - 3.8 µg/ml. Perform heat mediated antigen retrieval with citrate buffer pH 6 before commencing with IHC staining protocol.
WB		Use a concentration of 0.3 - 1 µg/ml. Detects a band of approximately 40 kDa (predicted molecular weight: 40 kDa). 1 hour primary incubation is recommended for this product.

靶标

功能	<p>Inhibitor subunit of the major nuclear protein phosphatase-1 (PP-1). It has RNA-binding activity but does not cleave RNA and may target PP-1 to RNA-associated substrates. May also be involved in pre-mRNA splicing. Binds DNA and might act as a transcriptional repressor. Seems to be required for cell proliferation.</p> <p>Isoform Gamma is a site-specific single-strand endoribonuclease that cleaves single strand RNA 3' to purines and pyrimidines in A+U-rich regions. It generates 5'-phosphate termini at the site of cleavage. This isoform does not inhibit PP-1. May be implicated in mRNA splicing.</p>
组织特异性	Ubiquitously expressed, with highest levels in heart and skeletal muscle, followed by brain, placenta, lung, liver and pancreas. Less abundant in kidney. The concentration and ratio between isoforms is cell-type dependent. Isoform Alpha (>90%) and isoform Beta were found in brain, heart and kidney. Isoform Gamma is mainly found in B-cells and T-lymphocytes, and has been found in 293 embryonic kidney cells.
序列相似性	Contains 1 FHA domain.

结构域	Has a basic N- and C-terminal and an acidic central domain.
翻译后修饰	May be inactivated by phosphorylation on Ser-199 or Ser-204 (By similarity). Phosphorylated by Lyn in vitro on Tyr-264, and also on Tyr-335 in the presence of RNA.
细胞定位	Nucleus. Nucleus speckle. Primarily, but not exclusively, nuclear and Cytoplasm. Found mainly in the cytoplasm.

图片



All lanes : Anti-NIPP1 antibody (ab5300) at 1 µg/ml

Lane 1 : HeLa nuclear lysate in RIPA buffer

Lane 2 : HepG2 nuclear lysate in RIPA buffer

Lane 3 : Jurkat nuclear lysate in RIPA buffer

Lane 4 : NIH3T3 nuclear lysate in RIPA buffer

Lysates/proteins at 35 µg per lane.

Predicted band size: 40 kDa

Primary incubation for 1 hour. Detected using chemiluminescence.

Please note: All products are "FOR RESEARCH USE ONLY. NOT FOR USE IN DIAGNOSTIC PROCEDURES"

Our Abpromise to you: Quality guaranteed and expert technical support

- Replacement or refund for products not performing as stated on the datasheet
- Valid for 12 months from date of delivery
- Response to your inquiry within 24 hours
- We provide support in Chinese, English, French, German, Japanese and Spanish
- Extensive multi-media technical resources to help you
- We investigate all quality concerns to ensure our products perform to the highest standards

If the product does not perform as described on this datasheet, we will offer a refund or replacement. For full details of the Abpromise, please visit <https://www.abcam.cn/abpromise> or contact our technical team.

Terms and conditions

- Guarantee only valid for products bought direct from Abcam or one of our authorized distributors