

Anti-NIPBL antibody [KT55] ab106768

★★★★★ [3 Abreviews](#) [3 References](#) [1 图像](#)

概述

产品名称	Anti-NIPBL抗体[KT55]
描述	大鼠单克隆抗体[KT55] to NIPBL
宿主	Rat
特异性	Recognises Human and Mouse NIPBL isoform B (short form).
经测试应用	适用于: Flow Cyt
种属反应性	与反应: Human
免疫原	Synthetic peptide corresponding to Human NIPBL (C terminal).
常规说明	<p>The Life Science industry has been in the grips of a reproducibility crisis for a number of years. Abcam is leading the way in addressing this with our range of recombinant monoclonal antibodies and knockout edited cell lines for gold-standard validation. Please check that this product meets your needs before purchasing.</p> <p>If you have any questions, special requirements or concerns, please send us an inquiry and/or contact our Support team ahead of purchase. Recommended alternatives for this product can be found below, along with publications, customer reviews and Q&As</p>

性能

形式	Liquid
存放说明	Shipped at 4°C. Store at +4°C short term (1-2 weeks). Upon delivery aliquot. Store at -20°C or -80°C. Avoid freeze / thaw cycle.
存储溶液	Preservative: 0.1% Sodium azide Constituent: PBS
纯度	Protein G purified
纯化说明	Purified from culture supernatant using a protein G column.
克隆	单克隆
克隆编号	KT55
同种型	IgG2a

应用

The Abpromise guarantee

Abpromise™ 承诺保证使用ab106768于以下的经测试应用

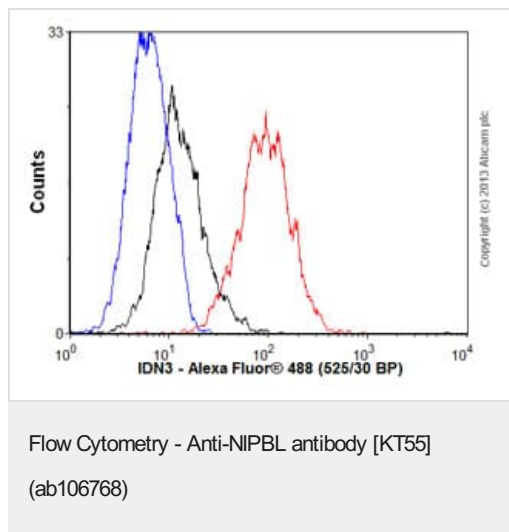
“应用说明”部分 下显示的仅为推荐的起始稀释度;实际最佳的稀释度/浓度应由使用者检定。

应用	Ab评论	说明
Flow Cyt		Use 1µg for 10 ⁶ cells. ab18450 - Rat monoclonal IgG2a, is suitable for use as an isotype control with this antibody.

靶标

功能	Probably plays a structural role in chromatin. Involved in sister chromatid cohesion, possibly by interacting with the cohesin complex.
组织特异性	Widely expressed. Highly expressed in heart, skeletal muscle, fetal and adult liver, fetal and adult kidney. Expressed at intermediates level in thymus, placenta, peripheral leukocyte and small intestine. Weakly or not expressed in brain, colon, spleen and lung.
疾病相关	Cornelia de Lange syndrome 1
序列相似性	Belongs to the SCC2/Nipped-B family. Contains 5 HEAT repeats.
发展阶段	In embryos, it is expressed in developing limbs and later in cartilage primordia of the ulna and of various hand bones. Sites of craniofacial expression include the cartilage primordium of the basioccipital and basisphenoid skull bones and elsewhere in the head and face, including a region encompassing the mesenchyme adjacent to the cochlear canal. Also expressed in the spinal column, notochord and surface ectoderm sclerotome and what seem to be migrating myoblasts. Expressed in the developing heart in the atrial and ventricular myocardium and in the ventricular tubeculae but absent in the endocardial cushions. Also expressed in the developing esophagus, trachea and midgut loops, in the bronchi of the lung and in the tubules of the metanephros. Expression in organs and tissues not typically affected in CDL (e.g. the developing trachea, bronchi, esophagus, heart and kidney) may reflect a bias towards underreporting of more subtle aspects of the phenotype or problems that typically present later in life. Expressed in the mesenchyme surrounding the cochlear canal possibly reflecting the hearing impairment commonly found. Weakly or not expressed in embryonic brain.
结构域	Contains one Pro-Xaa-Val-Xaa-Leu (PxVxL) motif, which is required for interaction with chromoshadow domains. This motif requires additional residues -7, -6, +4 and +5 of the central Val which contact the chromoshadow domain.
细胞定位	Nucleus.
形式	There are 3 isoforms produced by alternative splicing. Isoform 1 also known as: A; IDN3-A. Isoform 2 also known as: B; IDN3-B.

图片



Overlay histogram showing HepG2 cells stained with ab106768 (red line). The cells were fixed with 80% methanol (5 min) and then permeabilized with 0.1% PBS-Tween for 20 min. The cells were then incubated in 1x PBS / 10% normal goat serum / 0.3M glycine to block non-specific protein-protein interactions followed by the antibody (ab106768, 1µg/1x10⁶ cells) for 30 min at 22°C. The secondary antibody used was Alexa Fluor® 488 goat anti-rat IgG (H+L) ([ab150165](#)) at 1/2000 dilution for 30 min at 22°C. Isotype control antibody (black line) was rat IgG2a [aRTK2758] ([ab18450](#), 1µg/1x10⁶ cells) used under the same conditions. Unlabelled sample (blue line) was also used as a control. Acquisition of >5,000 events were collected using a 20mW Argon ion laser (488nm) and 525/30 bandpass filter.

Please note: All products are "FOR RESEARCH USE ONLY. NOT FOR USE IN DIAGNOSTIC PROCEDURES"

Our Abpromise to you: Quality guaranteed and expert technical support

- Replacement or refund for products not performing as stated on the datasheet
- Valid for 12 months from date of delivery
- Response to your inquiry within 24 hours
- We provide support in Chinese, English, French, German, Japanese and Spanish
- Extensive multi-media technical resources to help you
- We investigate all quality concerns to ensure our products perform to the highest standards

If the product does not perform as described on this datasheet, we will offer a refund or replacement. For full details of the Abpromise, please visit <https://www.abcam.cn/abpromise> or contact our technical team.

Terms and conditions

- Guarantee only valid for products bought direct from Abcam or one of our authorized distributors