



### Anti-NIPA1 antibody ab121744

#### 2 图像

#### 概述

产品名称	Anti-NIPA1抗体
描述	兔多克隆抗体to NIPA1
宿主	Rabbit
经测试应用	适用于: ICC/IF, IHC-P
种属反应性	与反应: Human
免疫原	Recombinant Protein Epitope Signature Tag, corresponding to amino acids 183-226 (HGPTNIMVYI SICSLLGSFT VPSTKGIGLA AQDILHNNPS SQRA) of Human NIPA1.  <a href="#">Run BLAST with ExPASy</a>  <a href="#">Run BLAST with NCBI</a>
阳性对照	Human urinary bladder tissue.
常规说明	<p>The Life Science industry has been in the grips of a reproducibility crisis for a number of years. Abcam is leading the way in addressing this with our range of recombinant monoclonal antibodies and knockout edited cell lines for gold-standard validation. Please check that this product meets your needs before purchasing.</p> <p>If you have any questions, special requirements or concerns, please send us an inquiry and/or contact our Support team ahead of purchase. Recommended alternatives for this product can be found below, along with publications, customer reviews and Q&amp;As</p>

#### 性能

形式	Liquid
存放说明	Shipped at 4°C. Upon delivery aliquot and store at -20°C. Avoid freeze / thaw cycles.
存储溶液	pH: 7.20 Preservative: 0.02% Sodium azide Constituents: 40% Glycerol (glycerin, glycerine), 59% PBS
纯度	Immunogen affinity purified
克隆	多克隆
同种型	IgG

#### 应用

The Abpromise guarantee

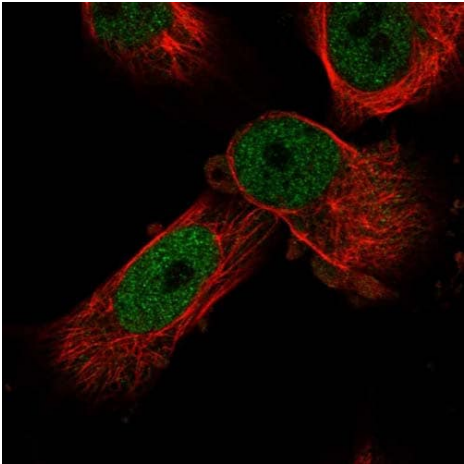
Abpromise™承诺保证使用ab121744于以下的经测试应用

“应用说明”部分 下显示的仅为推荐的起始稀释度;实际最佳的稀释度/浓度应由使用者检定。

应用	Ab评论	说明
ICC/IF		Use a concentration of 1 - 4 µg/ml. Recommend PFA Fixation and Triton X-100 treatment
IHC-P		1/20 - 1/50. Perform heat mediated antigen retrieval with citrate buffer pH 6 before commencing with IHC staining protocol.

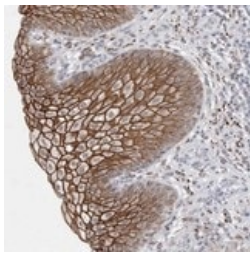
靶标	
功能	Acts as a Mg(2+) transporter. Can also transport other divalent cations such as Fe(2+), Sr(2+), Ba(2+), Mn(2+) and Co(2+) but to a much less extent than Mg(2+).
组织特异性	Widely expressed with highest levels in neuronal tissues.
疾病相关	Defects in NIPA1 are the cause of spastic paraplegia autosomal dominant type 6 (SPG6) [MIM:600363]. Spastic paraplegia is a degenerative spinal cord disorder characterized by a slow, gradual, progressive weakness and spasticity of the lower limbs.
序列相似性	Belongs to the NIPA family.
细胞定位	Cell membrane. Early endosome. Recruited to the cell membrane in response to low extracellular magnesium.

图片



Immunofluorescent staining of Human cell line U-251MG shows positivity in nuclei but not nucleoli. Recommended concentration of ab121744 1-4 µg/ml. Cells treated with PFA/Triton X-100.

Immunocytochemistry/ Immunofluorescence - Anti-NIPA1 antibody (ab121744)



ab121744, at a 1/10 dilution, staining NIPA1 in paraffin-embedded Human urinary bladder tissue by Immunohistochemistry.

Immunohistochemistry (Formalin/PFA-fixed paraffin-embedded sections) - Anti-NIPA1 antibody (ab121744)

**Please note:** All products are "FOR RESEARCH USE ONLY. NOT FOR USE IN DIAGNOSTIC PROCEDURES"

#### Our Abpromise to you: Quality guaranteed and expert technical support

---

- Replacement or refund for products not performing as stated on the datasheet
- Valid for 12 months from date of delivery
- Response to your inquiry within 24 hours
- We provide support in Chinese, English, French, German, Japanese and Spanish
- Extensive multi-media technical resources to help you
- We investigate all quality concerns to ensure our products perform to the highest standards

If the product does not perform as described on this datasheet, we will offer a refund or replacement. For full details of the Abpromise, please visit <https://www.abcam.cn/abpromise> or contact our technical team.

#### Terms and conditions

---

- Guarantee only valid for products bought direct from Abcam or one of our authorized distributors