


# Anti-Niemann Pick C2 antibody ab64183

## 2 图像

### 概述

---

产品名称	Anti-Niemann Pick C2抗体
描述	兔多克隆抗体to Niemann Pick C2
宿主	Rabbit
经测试应用	适用于: WB, IHC-P
种属反应性	与反应: Human 预测可用于: Chimpanzee, Monkey 
免疫原	Synthetic peptide corresponding to Human Niemann Pick C2 aa 1-100 conjugated to keyhole limpet haemocyanin. (Peptide available as <a href="#">ab93308</a> )
阳性对照	This antibody gave a positive signal in human testis tissue lysate.
常规说明	<p>The Life Science industry has been in the grips of a reproducibility crisis for a number of years. Abcam is leading the way in addressing this with our range of recombinant monoclonal antibodies and knockout edited cell lines for gold-standard validation. Please check that this product meets your needs before purchasing.</p> <p>If you have any questions, special requirements or concerns, please send us an inquiry and/or contact our Support team ahead of purchase. Recommended alternatives for this product can be found below, along with publications, customer reviews and Q&amp;As</p>

### 性能

---

形式	Liquid
存放说明	Shipped at 4°C. Store at +4°C short term (1-2 weeks). Upon delivery aliquot. Store at -20°C or -80°C. Avoid freeze / thaw cycle.
存储溶液	pH: 7.40 Preservative: 0.02% Sodium azide Constituent: PBS
纯度	Batches of this product that have a concentration < 1mg/ml may have BSA added as a stabilising agent. If you would like information about the formulation of a specific lot, please contact our scientific support team who will be happy to help. Immunogen affinity purified

克隆 多克隆  
同种型 IgG

## 应用

**The Abpromise guarantee** **Abpromise™**承诺保证使用ab64183于以下的经测试应用

“应用说明”部分 下显示的仅为推荐的起始稀释度;实际最佳的稀释度/浓度应由使用者检定。

应用	Ab评论	说明
WB		Use a concentration of 1 µg/ml. Detects a band of approximately 20 kDa (predicted molecular weight: 16 kDa).
IHC-P		Use a concentration of 1 µg/ml.

## 靶标

**功能** May be involved in the regulation of the lipid composition of sperm membranes during the maturation in the epididymis.

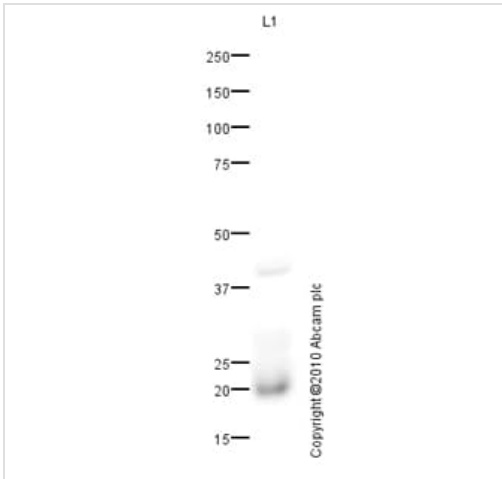
**组织特异性** Epididymis.

**疾病相关** Defects in NPC2 are the cause of Niemann-Pick disease type C2 (NPDC2) [MIM:607625]. A lysosomal storage disorder that affects the viscera and the central nervous system. It is due to defective intracellular processing and transport of low-density lipoprotein derived cholesterol. It causes accumulation of cholesterol in lysosomes, with delayed induction of cholesterol homeostatic reactions. Niemann-Pick disease type C2 has a highly variable clinical phenotype. Clinical features include variable hepatosplenomegaly and severe progressive neurological dysfunction such as ataxia, dystonia and dementia. The age of onset can vary from infancy to late adulthood.

**序列相似性** Belongs to the NPC2 family.

**细胞定位** Secreted.

## 图片



Western blot - Anti-Niemann Pick C2 antibody (ab64183)

Anti-Niemann Pick C2 antibody (ab64183) at 1 µg/ml + Human testis tissue lysate - total protein (**ab30257**) at 10 µg

**Secondary**

Goat polyclonal to Rabbit IgG - H&L - Pre-Adsorbed (HRP) at 1/3000 dilution

Developed using the ECL technique.

Performed under reducing conditions.

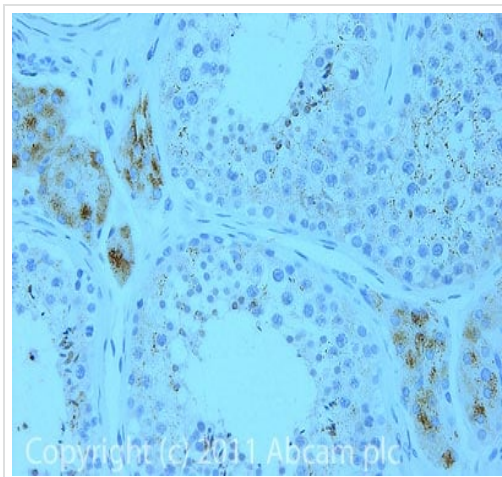
**Predicted band size:** 16 kDa

**Observed band size:** 20 kDa

**Additional bands at:** 41 kDa. We are unsure as to the identity of these extra bands.

**Exposure time:** 10 minutes

Human Epididymal secretory protein E1 precursor (Niemann pick C2) contains a number of potential glycosylation sites (SwissProt) which may explain the higher migrating band.



Immunohistochemistry (Formalin/PFA-fixed paraffin-embedded sections) - Anti-Niemann Pick C2 antibody (ab64183)

IHC image of ab64183 staining in Human testis formalin fixed paraffin embedded tissue section, performed on a Leica Bond™ system using the standard protocol F. The section was pre-treated using heat mediated antigen retrieval with sodium citrate buffer (pH6, epitope retrieval solution 1) for 20 mins. The section was then incubated with ab64183, 1 µg/ml, for 15 mins at room temperature and detected using an HRP conjugated compact polymer system. DAB was used as the chromogen. The section was then counterstained with haematoxylin and mounted with DPX.

For other IHC staining systems (automated and non-automated) customers should optimize variable parameters such as antigen retrieval conditions, primary antibody concentration and antibody incubation times.

**Please note:** All products are "FOR RESEARCH USE ONLY. NOT FOR USE IN DIAGNOSTIC PROCEDURES"

**Our Abpromise to you: Quality guaranteed and expert technical support**

- Replacement or refund for products not performing as stated on the datasheet
- Valid for 12 months from date of delivery
- Response to your inquiry within 24 hours
  
- We provide support in Chinese, English, French, German, Japanese and Spanish
- Extensive multi-media technical resources to help you
- We investigate all quality concerns to ensure our products perform to the highest standards

If the product does not perform as described on this datasheet, we will offer a refund or replacement. For full details of the Abpromise, please visit <https://www.abcam.cn/abpromise> or contact our technical team.

### **Terms and conditions**

---

- Guarantee only valid for products bought direct from Abcam or one of our authorized distributors