


Anti-NHP2L1 antibody ab95958

★★★★★ [3 Abreviews](#) [5 References](#) [3 图像](#)

概述

产品名称	Anti-NHP2L1抗体
描述	兔多克隆抗体to NHP2L1
宿主	Rabbit
经测试应用	适用于: WB, IHC-P, ICC/IF
种属反应性	与反应: Human 预测可用于: Zebrafish 
免疫原	Recombinant fragment corresponding to Human NHP2L1 aa 1-98. Database link: P55769
阳性对照	WB: HeLa and HepG2 whole cell lysates ICC/IF: Hela cell IHC-P: Cal27 xenograft
常规说明	<p>The Life Science industry has been in the grips of a reproducibility crisis for a number of years. Abcam is leading the way in addressing this with our range of recombinant monoclonal antibodies and knockout edited cell lines for gold-standard validation. Please check that this product meets your needs before purchasing.</p> <p>If you have any questions, special requirements or concerns, please send us an inquiry and/or contact our Support team ahead of purchase. Recommended alternatives for this product can be found below, along with publications, customer reviews and Q&As</p>

性能

形式	Liquid
存放说明	Shipped at 4°C. Upon delivery aliquot and store at -20°C. Avoid repeated freeze / thaw cycles.
存储溶液	pH: 7.00 Preservative: 0.01% Thimerosal (merthiolate) Constituents: 1.21% Tris, 0.75% Glycine, 10% Glycerol (glycerin, glycerine)
纯度	Immunogen affinity purified
克隆	多克隆
同种型	IgG

应用

The Abpromise guarantee

Abpromise™承诺保证使用ab95958于以下的经测试应用

“应用说明”部分 下显示的仅为推荐的起始稀释度;实际最佳的稀释度/浓度应由使用者检定。

应用	Ab评论	说明
WB	★★★★★ (2)	1/500 - 1/3000. Predicted molecular weight: 14 kDa.
IHC-P		1/100 - 1/250.
ICC/IF	★★★★★ (1)	1/100 - 1/200.

靶标

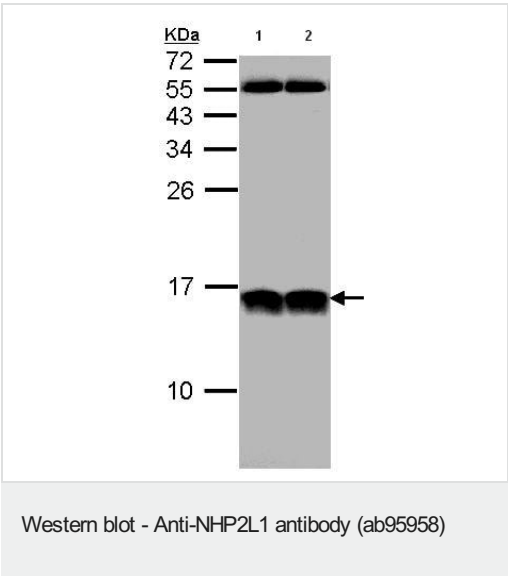
相关性

Originally named because of its sequence similarity to the *Saccharomyces cerevisiae* NHP2 (non histone protein 2), this protein appears to be a highly conserved nuclear protein that is a component of the [U4/U6.U5] tri snRNP. It binds to the 5' stem loop of U4 snRNA. Two transcript variants encoding the same protein have been found for this gene.

细胞定位

Nucleus > nucleolus. Note: Concentrated in the dense fibrillar component of the nucleolus.

图片



All lanes : Anti-NHP2L1 antibody (ab95958) at 1/1000 dilution

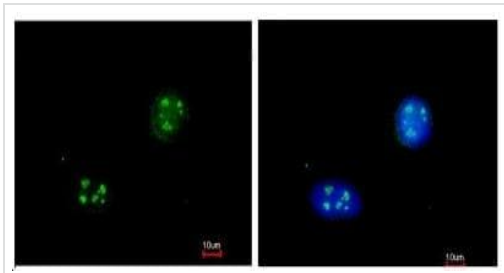
Lane 1 : HeLa whole cell lysate

Lane 2 : HepG2 whole cell lysate

Lysates/proteins at 30 µg per lane.

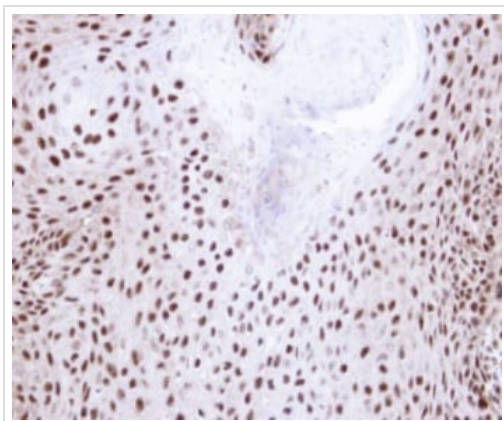
Predicted band size: 14 kDa

12% SDS PAGE



Immunocytochemistry/ Immunofluorescence - Anti-NHP2L1 antibody (ab95958)

ab95958, at a 1/200 dilution, staining NHP2L1 in paraformaldehyde fixed HeLa cell by Immunofluorescence analysis.



Immunohistochemistry (Formalin/PFA-fixed paraffin-embedded sections) - Anti-NHP2L1 antibody (ab95958)

ab95958, at a 1/100 dilution, staining NHP2L1 in paraffin embedded Cal27 xenograft by Immunohistochemistry.

Please note: All products are "FOR RESEARCH USE ONLY. NOT FOR USE IN DIAGNOSTIC PROCEDURES"

Our Abpromise to you: Quality guaranteed and expert technical support

- Replacement or refund for products not performing as stated on the datasheet
- Valid for 12 months from date of delivery
- Response to your inquiry within 24 hours
- We provide support in Chinese, English, French, German, Japanese and Spanish
- Extensive multi-media technical resources to help you
- We investigate all quality concerns to ensure our products perform to the highest standards

If the product does not perform as described on this datasheet, we will offer a refund or replacement. For full details of the Abpromise, please visit <https://www.abcam.cn/abpromise> or contact our technical team.

Terms and conditions

- Guarantee only valid for products bought direct from Abcam or one of our authorized distributors