

# Anti-NHLH1 + NHLH2 antibody ab72601

★★★★★ [1 Abreviews](#) [1 References](#) [1 图像](#)

### 概述

<b>产品名称</b>	Anti-NHLH1 + NHLH2抗体
<b>描述</b>	兔多克隆抗体to NHLH1 + NHLH2
<b>宿主</b>	Rabbit
<b>经测试应用</b>	<b>适用于:</b> WB
<b>种属反应性</b>	<b>与反应:</b> Human
<b>免疫原</b>	Synthetic peptide corresponding to Human NHLH1 + NHLH2 aa 41-90 (internal sequence).
<b>常规说明</b>	<p>The Life Science industry has been in the grips of a reproducibility crisis for a number of years. Abcam is leading the way in addressing this with our range of recombinant monoclonal antibodies and knockout edited cell lines for gold-standard validation. Please check that this product meets your needs before purchasing.</p> <p>If you have any questions, special requirements or concerns, please send us an inquiry and/or contact our Support team ahead of purchase. Recommended alternatives for this product can be found below, along with publications, customer reviews and Q&amp;As</p>

### 性能

<b>形式</b>	Liquid
<b>存放说明</b>	Shipped at 4°C. Store at -20°C. Stable for 12 months at -20°C.
<b>存储溶液</b>	pH: 7.40 Preservative: 0.02% Sodium azide Constituents: 0.87% Sodium chloride, 50% Glycerol (glycerin, glycerine), PBS
<b>纯度</b>	Without Mg <sup>2+</sup> and Ca <sup>2+</sup>
<b>克隆</b>	Immunogen affinity purified
<b>同种型</b>	多克隆 IgG

### 应用

The Abpromise guarantee

**Abpromise™** 承诺保证使用ab72601于以下的经测试应用

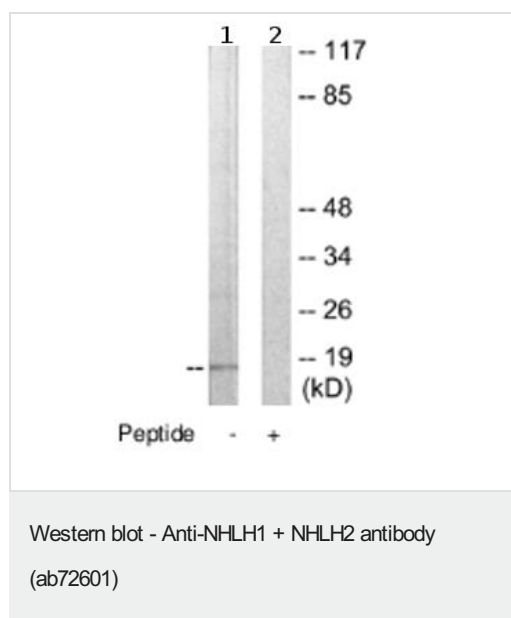
“应用说明”部分 下显示的仅为推荐的起始稀释度;实际最佳的稀释度/浓度应由使用者检定。

应用	Ab评论	说明
WB		1/500 - 1/1000. Detects a band of approximately 15 kDa (predicted molecular weight: 15 kDa).

## 靶标

相关性	NHLH1 and NHLH2 are two basic domain helix-loop-helix (bHLH) proteins expressed predominantly in the developing nervous system and also in some cell lines derived from tumors with neural or neuroendocrine features such as neuroblastoma, PNET, and small cell lung cancer.
细胞定位	Nuclear

## 图片



**All lanes :** Anti-NHLH1 + NHLH2 antibody (ab72601) at 1/500 dilution

**Lane 1 :** extracts from Jurkat cells

**Lane 2 :** extracts from Jurkat cells with immunising peptide at 5 µg

Lysates/proteins at 5 µg per lane.

**Predicted band size:** 15 kDa

**Observed band size:** 15 kDa

**Please note:** All products are "FOR RESEARCH USE ONLY. NOT FOR USE IN DIAGNOSTIC PROCEDURES"

## Our Abpromise to you: Quality guaranteed and expert technical support

- Replacement or refund for products not performing as stated on the datasheet
- Valid for 12 months from date of delivery
- Response to your inquiry within 24 hours
- We provide support in Chinese, English, French, German, Japanese and Spanish
- Extensive multi-media technical resources to help you
- We investigate all quality concerns to ensure our products perform to the highest standards

If the product does not perform as described on this datasheet, we will offer a refund or replacement. For full details of the Abpromise, please visit <https://www.abcam.cn/abpromise> or contact our technical team.

## Terms and conditions

---

- Guarantee only valid for products bought direct from Abcam or one of our authorized distributors