


### Anti-NG2 antibody ab129051

★★★★★ [8 Abreviews](#) [56 References](#) [3 图像](#)

#### 概述

产品名称	Anti-NG2抗体
描述	兔多克隆抗体to NG2
宿主	Rabbit
特异性	Replenishment batches of our polyclonal antibody, ab129051 are tested in IHC-P. Previous batches were additionally validated in ICC/IF and WB. These applications are still expected to work and are covered by our Abpromise guarantee. You may also be interested in our alternative recombinant antibody, <a href="#">ab275024</a> .
经测试应用	<b>适用于:</b> IHC-P, WB, ICC/IF
种属反应性	<b>与反应:</b> Mouse, Rat, Human <b>预测可用于:</b> Horse, Cow, Dog, Macaque monkey, Chinese hamster, Orangutan 
免疫原	Synthetic peptide corresponding to Mouse NG2 aa 300-400 conjugated to keyhole limpet haemocyanin. Database link: <a href="#">Q8VHY0</a>
常规说明	<p>The Life Science industry has been in the grips of a reproducibility crisis for a number of years. Abcam is leading the way in addressing this with our range of recombinant monoclonal antibodies and knockout edited cell lines for gold-standard validation. Please check that this product meets your needs before purchasing.</p> <p>If you have any questions, special requirements or concerns, please send us an inquiry and/or contact our Support team ahead of purchase. Recommended alternatives for this product can be found below, along with publications, customer reviews and Q&amp;As</p>

#### 性能

形式	Liquid
存放说明	Shipped at 4°C. Store at +4°C short term (1-2 weeks). Upon delivery aliquot. Store at -20°C or -80°C. Avoid freeze / thaw cycle.
存储溶液	pH: 7.40 Preservative: 0.02% Sodium azide Constituent: PBS

Batches of this product that have a concentration < 1mg/ml may have BSA added as a stabilising agent. If you would like information about the formulation of a specific lot, please contact our

	scientific support team who will be happy to help.
纯度	Immunogen affinity purified
克隆	多克隆
同种型	IgG

应用

**The Abpromise guarantee**      **Abpromise™**承诺保证使用ab129051于以下的经测试应用

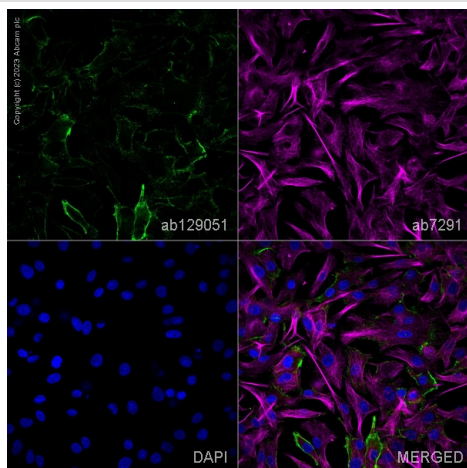
“应用说明”部分 下显示的仅为推荐的起始稀释度;实际最佳的稀释度/浓度应由使用者检定。

应用	Ab评论	说明
IHC-P	★★★★☆ (3)	Use a concentration of 1 µg/ml.
WB		Use a concentration of 1 µg/ml. Detects a band of approximately 252 kDa (predicted molecular weight: 252 kDa). Abcam recommends using milk as the blocking agent - 3%
ICC/IF	★★★★★ (1)	Use a concentration of 5 µg/ml.

靶标

功能	<p>Proteoglycan playing a role in cell proliferation and migration which stimulates endothelial cells motility during microvascular morphogenesis. May also inhibit neurite outgrowth and growth cone collapse during axon regeneration. Cell surface receptor for collagen alpha 2(VI) which may confer cells ability to migrate on that substrate. Binds through its extracellular N-terminus growth factors, extracellular matrix proteases modulating their activity. May regulate MPP16-dependent degradation and invasion of type I collagen participating in melanoma cells invasion properties. May modulate the plasminogen system by enhancing plasminogen activation and inhibiting angiostatin. Functions also as a signal transducing protein by binding through its cytoplasmic C-terminus scaffolding and signaling proteins. May promote retraction fiber formation and cell polarization through Rho GTPase activation. May stimulate alpha-4, beta-1 integrin-mediated adhesion and spreading by recruiting and activating a signaling cascade through CDC42, ACK1 and BCAR1. May activate FAK and ERK1/ERK2 signaling cascades.</p>
组织特异性	Detected only in malignant melanoma cells.
序列相似性	<p>Contains 15 CSPG (NG2) repeats.</p> <p>Contains 2 laminin G-like domains.</p>
翻译后修饰	<p>O-glycosylated; contains glycosaminoglycan chondroitin sulfate which are required for proper localization and function in stress fiber formation (By similarity). Involved in interaction with MMP16 and ITGA4.</p> <p>Phosphorylation by PRKCA regulates its subcellular location and function in cell motility.</p>
细胞定位	<p>Apical cell membrane. Cell projection &gt; lamellipodium membrane. Localized at the apical plasma membrane it relocalizes to the lamellipodia of astrocytoma upon phosphorylation by PRKCA.</p> <p>Localizes to the retraction fibers. Localizes to the plasma membrane of oligodendrocytes.</p>

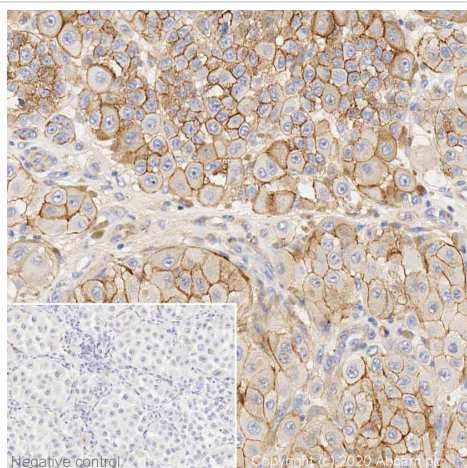
图片



Immunocytochemistry/ Immunofluorescence - Anti-NG2 antibody (ab129051)

ab129051 staining NG2 in Malme-3M cells. The cells were fixed with 100% methanol (5 min), permeabilized with 0.1% PBS-Tween for 5 minutes and then blocked with 1% BSA/10% normal goat serum/0.3M glycine in 0.1%PBS-Tween for 1h. The cells were then incubated overnight at 4°C with ab129051 at 1µg/ml and **ab7291**, Mouse monoclonal [DM1A] to alpha Tubulin - Loading Control. Cells were then incubated with **ab150081**, Goat polyclonal Secondary Antibody to Rabbit IgG - H&L (Alexa Fluor® 488), pre-adsorbed at 1/1000 dilution (shown in green) and **ab150120**, Goat polyclonal Secondary Antibody to Mouse IgG - H&L (Alexa Fluor® 594), pre-adsorbed at 1/1000 dilution (shown in pseudocolour magenta). Nuclear DNA was labelled with DAPI (shown in blue).

Image was acquired with a high-content analyser (Operetta CLS, Perkin Elmer) and a maximum intensity projection of confocal sections is shown.

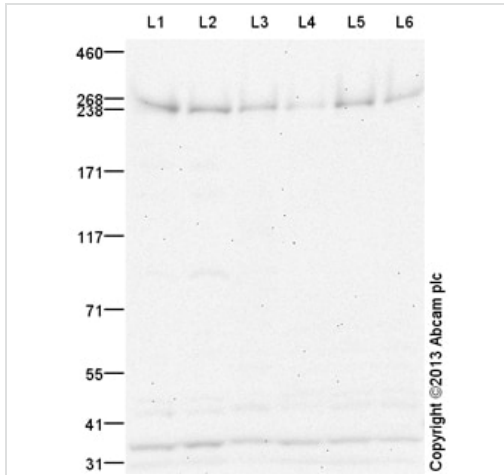


Immunohistochemistry (Formalin/PFA-fixed paraffin-embedded sections) - Anti-NG2 antibody (ab129051)

IHC image of NG2 staining in Human skin melanoma formalin fixed paraffin embedded tissue section\*, performed on a Leica Bond™ system using the standard protocol F. The section was pre-treated using heat mediated antigen retrieval with sodium citrate buffer (pH6, epitope retrieval solution 1) for 20 mins. The section was then incubated with ab129051, 1µg/ml, for 15 mins at room temperature and detected using an HRP conjugated compact polymer system. DAB was used as the chromogen. The section was then counterstained with haematoxylin and mounted with DPX.

For other IHC staining systems (automated and non-automated) customers should optimize variable parameters such as antigen retrieval conditions, primary antibody concentration and antibody incubation times.

\*Tissue obtained from the Human Research Tissue Bank, supported by the NIHR Cambridge Biomedical Research Centre.



Western blot - Anti-NG2 antibody (ab129051)

**All lanes :** Anti-NG2 antibody (ab129051) at 1 µg/ml (Milk blocking - 3%)

**Lane 1 :** Brain (Mouse) Tissue Lysate

**Lane 2 :** Mouse Hippocampus Tissue Lysate

**Lane 3 :** Cerebellum Mouse Tissue Lysate

**Lane 4 :** Spinal Cord (Mouse) Tissue Lysate

**Lane 5 :** Brain (Rat) Tissue Lysate

**Lane 6 :** Spinal Cord (Rat) Tissue Lysate

Lysates/proteins at 25 µg per lane.

### Secondary

**All lanes :** Goat Anti-Rabbit IgG H&L (HRP) ([ab97051](#)) at 1/10000 dilution

Developed using the ECL technique.

Performed under reducing conditions.

**Predicted band size:** 252 kDa

**Observed band size:** 252 kDa

**Exposure time:** 20 minutes

Abcam recommends using milk as the blocking agent - 3%. This blot was produced using a 3-8% Tris Acetate gel under the TA buffer system. The gel was run at 150V for 60 minutes before being transferred onto a Nitrocellulose membrane at 30V for 70 minutes. The membrane was then blocked for an hour using 3% milk before being incubated with ab129051 overnight at 4°C. Antibody binding was detected using an anti-rabbit antibody conjugated to HRP, and

visualised using ECL development solution.

**Please note:** All products are "FOR RESEARCH USE ONLY. NOT FOR USE IN DIAGNOSTIC PROCEDURES"

### **Our Abpromise to you: Quality guaranteed and expert technical support**

---

- Replacement or refund for products not performing as stated on the datasheet
- Valid for 12 months from date of delivery
- Response to your inquiry within 24 hours
- We provide support in Chinese, English, French, German, Japanese and Spanish
- Extensive multi-media technical resources to help you
- We investigate all quality concerns to ensure our products perform to the highest standards

If the product does not perform as described on this datasheet, we will offer a refund or replacement. For full details of the Abpromise, please visit <https://www.abcam.cn/abpromise> or contact our technical team.

### **Terms and conditions**

---

- Guarantee only valid for products bought direct from Abcam or one of our authorized distributors