

Anti-NFkB Inducing Kinase NIK antibody ab19144

[4 References](#) [3 图像](#)

概述

产品名称	Anti-NFkB Inducing Kinase NIK抗体
描述	兔多克隆抗体to NFkB Inducing Kinase NIK
宿主	Rabbit
特异性	This antibody recognises human NFkB Inducing Kinase NIK.
经测试应用	适用于: IHC-P, ICC/IF, WB
种属反应性	与反应: Human
免疫原	Synthetic peptide: SFAWSWRVKHGQLENRP , corresponding to amino acids 931-947 of Human NFkB Inducing Kinase NIK Run BLAST with Run BLAST with
阳性对照	Whole cell lysate of 293.
常规说明	<p>The Life Science industry has been in the grips of a reproducibility crisis for a number of years. Abcam is leading the way in addressing this with our range of recombinant monoclonal antibodies and knockout edited cell lines for gold-standard validation. Please check that this product meets your needs before purchasing.</p> <p>If you have any questions, special requirements or concerns, please send us an inquiry and/or contact our Support team ahead of purchase. Recommended alternatives for this product can be found below, along with publications, customer reviews and Q&As</p>

性能

形式	Liquid
存放说明	Shipped at 4°C. Upon delivery aliquot and store at -20°C or -80°C. Avoid repeated freeze / thaw cycles.
存储溶液	pH: 7.40 Preservative: 0.02% Sodium azide Constituent: PBS
纯度	Immunogen affinity purified
克隆	多克隆
同种型	IgG

应用

The Abpromise guarantee **Abpromise™**承诺保证使用ab19144于以下的经测试应用

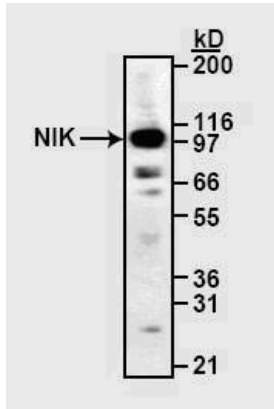
“应用说明”部分 下显示的仅为推荐的起始稀释度;实际最佳的稀释度/浓度应由使用者检定。

应用	Ab评论	说明
IHC-P		Use a concentration of 5 µg/ml. Perform heat mediated antigen retrieval with citrate buffer pH 6 before commencing with IHC staining protocol.
ICC/IF		Use a concentration of 1 - 5 µg/ml.
WB		1/500. Detects a band of approximately 105 kDa (predicted molecular weight: 105.4 kDa).

靶标

功能	Lymphotoxin beta-activated kinase which seems to be exclusively involved in the activation of NF-kappa-B and its transcriptional activity. Promotes proteolytic processing of NFKB2/P100, which leads to activation of NF-kappa-B via the non-canonical pathway. Could act in a receptor-selective manner.
组织特异性	Weakly expressed in testis, small intestine, spleen, thymus, peripheral blood leukocytes, prostate, ovary and colon.
序列相似性	Belongs to the protein kinase superfamily. STE Ser/Thr protein kinase family. MAP kinase kinase kinase subfamily. Contains 1 protein kinase domain.
翻译后修饰	Autophosphorylated. Phosphorylation at Thr-559 is required to activates its kinase activity and 'Lys-63'-linked polyubiquitination. Phosphorylated by CHUK/IKKA leading to MAP3K14 destabilization. Ubiquitinated. Undergoes both 'Lys-48'- and 'Lys-63'-linked polyubiquitination. 'Lys-48'-linked polyubiquitination leads to its degradation by the proteasome, while 'Lys-63'-linked polyubiquitination stabilizes and activates it.
细胞定位	Cytoplasm.

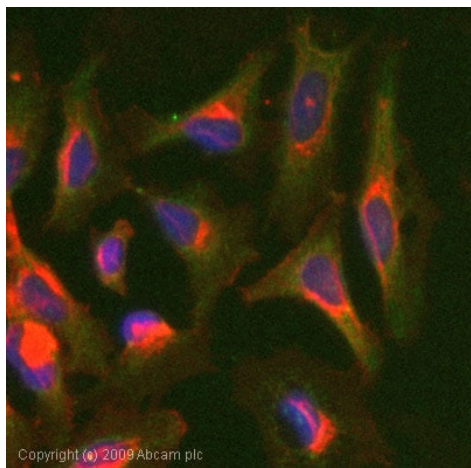
图片



Western blot - Anti-NFκB Inducing Kinase NIK antibody (ab19144)

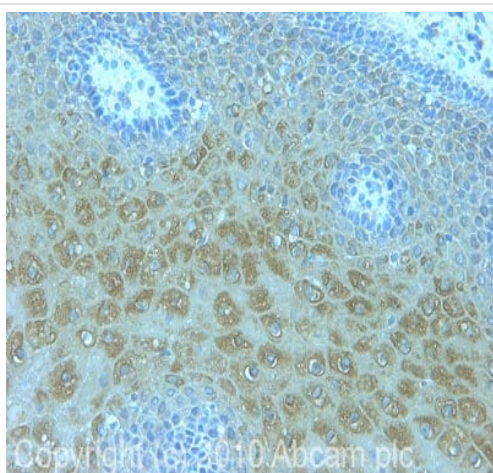
Anti-NFκB Inducing Kinase NIK antibody (ab19144) at 1/500 dilution + NIK-transfected 293 cell lysate

Predicted band size: 105.4 kDa



Immunocytochemistry/ Immunofluorescence - Anti-NFκB Inducing Kinase NIK antibody (ab19144)

ICC/IF image of ab19144 stained HeLa cells. The cells were 100% methanol fixed (5 min) and then incubated in 1%BSA / 10% normal goat serum / 0.3M glycine in 0.1% PBS-Tween for 1h to permeabilise the cells and block non-specific protein-protein interactions. The cells were then incubated with the antibody (ab19144, 1µg/ml) overnight at +4°C. The secondary antibody (green) was Alexa Fluor® 488 goat anti-rabbit IgG (H+L) used at a 1/1000 dilution for 1h. Alexa Fluor® 594 WGA was used to label plasma membranes (red) at a 1/200 dilution for 1h. DAPI was used to stain the cell nuclei (blue) at a concentration of 1.43µM.



Immunohistochemistry (Formalin/PFA-fixed paraffin-embedded sections) - Anti-NFκB Inducing Kinase NIK antibody (ab19144)

IHC image of ab19144 staining in human cervix formalin fixed paraffin embedded tissue section, performed on a Leica Bond™ system using the standard protocol F. The section was pre-treated using heat mediated antigen retrieval with sodium citrate buffer (pH6, epitope retrieval solution 1) for 20 mins. The section was then incubated with ab19144, 5µg/ml, for 15 mins at room temperature and detected using an HRP conjugated compact polymer system. DAB was used as the chromogen. The section was then counterstained with haematoxylin and mounted with DPX.

For other IHC staining systems (automated and non-automated) customers should optimize variable parameters such as antigen retrieval conditions, primary antibody concentration and antibody incubation times.

Please note: All products are "FOR RESEARCH USE ONLY. NOT FOR USE IN DIAGNOSTIC PROCEDURES"

Our Abpromise to you: Quality guaranteed and expert technical support

- Replacement or refund for products not performing as stated on the datasheet
- Valid for 12 months from date of delivery
- Response to your inquiry within 24 hours

- We provide support in Chinese, English, French, German, Japanese and Spanish
- Extensive multi-media technical resources to help you
- We investigate all quality concerns to ensure our products perform to the highest standards

If the product does not perform as described on this datasheet, we will offer a refund or replacement. For full details of the Abpromise, please visit <https://www.abcam.cn/abpromise> or contact our technical team.

Terms and conditions

- Guarantee only valid for products bought direct from Abcam or one of our authorized distributors