

# Anti-Neurofilament heavy polypeptide antibody ab72996

★★★★★ [1 Abreviews](#) [33 References](#) [1 图像](#)

### 概述

产品名称	Anti-Neurofilament heavy polypeptide抗体
描述	鸡多克隆抗体to Neurofilament heavy polypeptide
宿主	Chicken
经测试应用	适用于: WB
种属反应性	与反应: Rat
免疫原	Full length native protein (purified) corresponding to Cow Neurofilament heavy polypeptide.
常规说明	<p>The Life Science industry has been in the grips of a reproducibility crisis for a number of years. Abcam is leading the way in addressing this with our range of recombinant monoclonal antibodies and knockout edited cell lines for gold-standard validation. Please check that this product meets your needs before purchasing.</p> <p>If you have any questions, special requirements or concerns, please send us an inquiry and/or contact our Support team ahead of purchase. Recommended alternatives for this product can be found below, along with publications, customer reviews and Q&amp;As</p>

### 性能

形式	Liquid
存放说明	Shipped at 4°C. Upon delivery aliquot and store at -20°C or -80°C. Avoid repeated freeze / thaw cycles.
存储溶液	Preservative: 0.065% Sodium azide Constituent: Tissue culture supernatant
纯度	IgY fraction
克隆	多克隆
同种型	IgY

### 应用

**The Abpromise guarantee**      **Abpromise™** 承诺保证使用ab72996于以下的经测试应用

“应用说明”部分 下显示的仅为推荐的起始稀释度;实际最佳的稀释度/浓度应由使用者检定。

应用	Ab评论	说明
WB		1/50000. Detects a band of approximately 200 kDa (predicted molecular weight: 115 kDa).

## 靶标

### 功能

Neurofilaments usually contain three intermediate filament proteins: L, M, and H which are involved in the maintenance of neuronal caliber. NF-H has an important function in mature axons that is not subserved by the two smaller NF proteins.

### 疾病相关

Defects in NEFH are a cause of susceptibility to amyotrophic lateral sclerosis (ALS) [MIM:105400]. ALS is a neurodegenerative disorder affecting upper and lower motor neurons, and resulting in fatal paralysis. Sensory abnormalities are absent. Death usually occurs within 2 to 5 years. The etiology is likely to be multifactorial, involving both genetic and environmental factors.

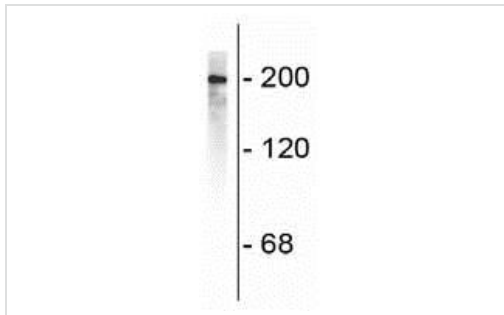
### 序列相似性

Belongs to the intermediate filament family.

### 翻译后修饰

There are a number of repeats of the tripeptide K-S-P, NFH is phosphorylated on a number of the serines in this motif. It is thought that phosphorylation of NFH results in the formation of interfilament cross bridges that are important in the maintenance of axonal caliber. Phosphorylation seems to play a major role in the functioning of the larger neurofilament polypeptides (NF-M and NF-H), the levels of phosphorylation being altered developmentally and coincident with a change in the neurofilament function. Phosphorylated in the Head and Rod regions by the PKC kinase PKN1, leading to inhibit polymerization.

## 图片



Anti-Neurofilament heavy polypeptide antibody (ab72996) at 1/50000 dilution + Rat cerebral cortex lysate

**Predicted band size:** 115 kDa

**Observed band size:** 200 kDa

Western blot - Anti-Neurofilament heavy polypeptide antibody (ab72996)

**Please note:** All products are "FOR RESEARCH USE ONLY. NOT FOR USE IN DIAGNOSTIC PROCEDURES"

## Our Abpromise to you: Quality guaranteed and expert technical support

- Replacement or refund for products not performing as stated on the datasheet
- Valid for 12 months from date of delivery

- Response to your inquiry within 24 hours
- We provide support in Chinese, English, French, German, Japanese and Spanish
- Extensive multi-media technical resources to help you
- We investigate all quality concerns to ensure our products perform to the highest standards

If the product does not perform as described on this datasheet, we will offer a refund or replacement. For full details of the Abpromise, please visit <https://www.abcam.cn/abpromise> or contact our technical team.

### **Terms and conditions**

---

- Guarantee only valid for products bought direct from Abcam or one of our authorized distributors