


Anti-NET1 antibody ab113202

2 References 3 图像

概述	
产品名称	Anti-NET1抗体
描述	兔多克隆抗体to NET1
宿主	Rabbit
经测试应用	适用于: WB, IP
种属反应性	与反应: Human 预测可用于: Chimpanzee, Gorilla 
免疫原	Synthetic peptide, corresponding to a region within amino acids 546-596 of Human NET1 (NP_001040625).
阳性对照	WB: Jurkat whole cell lysate and HEK293T whole cell lysate.
常规说明	<p>The Life Science industry has been in the grips of a reproducibility crisis for a number of years. Abcam is leading the way in addressing this with our range of recombinant monoclonal antibodies and knockout edited cell lines for gold-standard validation. Please check that this product meets your needs before purchasing.</p> <p>If you have any questions, special requirements or concerns, please send us an inquiry and/or contact our Support team ahead of purchase. Recommended alternatives for this product can be found below, along with publications, customer reviews and Q&amp;As</p>
性能	
形式	Liquid
存放说明	Shipped at 4°C. Upon delivery aliquot and store at -20°C. Avoid freeze / thaw cycles.
存储溶液	pH: 7 Preservative: 0.09% Sodium azide Constituent: 99% Tris citrate/phosphate
纯度	pH 7 to 8 Immunogen affinity purified
克隆	多克隆
同种型	IgG

应用

**The Abpromise guarantee**      **Abpromise™**承诺保证使用ab113202于以下的经测试应用

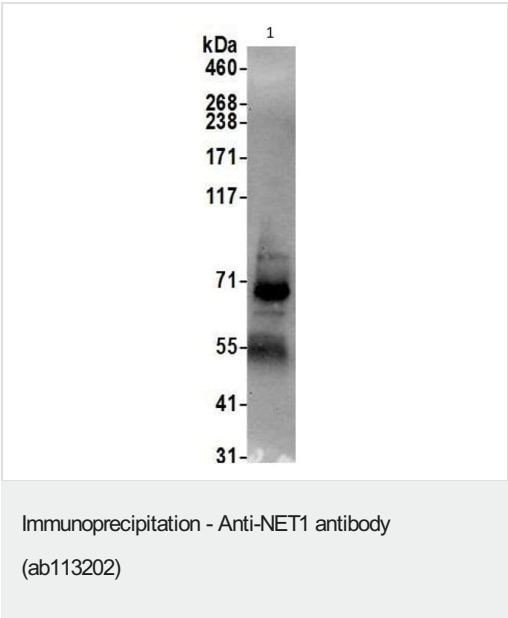
“应用说明”部分 下显示的仅为推荐的起始稀释度;实际最佳的稀释度/浓度应由使用者检定。

应用	Ab评论	说明
WB		Use a concentration of 0.1 - 1 µg/ml. Predicted molecular weight: 62 kDa.
IP		Use at 2-10 µg/mg of lysate.

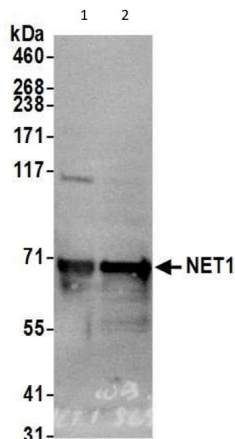
靶标

功能	Acts as guanine nucleotide exchange factor (GEF) for RhoA GTPase. May be involved in activation of the SAPK/JNK pathway Stimulates genotoxic stress-induced RHOB activity in breast cancer cells leading to their cell death.
组织特异性	Widely expressed.
序列相似性	Contains 1 DH (DBL-homology) domain. Contains 1 PH domain.
细胞定位	Cytoplasm. Nucleus.

图片



Immunoprecipitation of NET1 (6 µg of antibody per mg of HEK-293T cell lysate; 20% of the IP loaded). Anti-Net 1 antibody (ab113202) used at 1 µg/ml for western blot. Detection: Chemiluminescence with exposure time of 30 seconds.



Western blot - Anti-NET1 antibody (ab113202)

**All lanes :** Anti-NET1 antibody (ab113202) at 0.1 µg/ml

**Lane 1 :** HEK-293T (Human epithelial cell line from embryonic kidney transformed with large T antigen) whole cell lysate

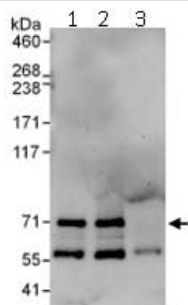
**Lane 2 :** Jurkat (Human T cell leukemia cell line from peripheral blood) whole cell lysate

Lysates/proteins at 50 µg per lane.

**Predicted band size:** 62 kDa

**Exposure time:** 30 seconds

Detected by chemiluminescence.



Immunoprecipitation - Anti-NET1 antibody  
(ab113202)

Immunoprecipitation of NET1 (6 µg of antibody per mg of Jurkat cell lysate; 20% of the IP loaded). Lane 1- Immunoprecipitation with an anti-Net1 antibody that recognizes an upstream epitope; Lane 2- Immunoprecipitation with ab113202; Lane 3- Immunoprecipitation with IgG control. Anti-Net 1 antibody (ab113202) used at 1 µg/ml for western blot. Detection: Chemiluminescence with exposure time of 3 min.

**Please note:** All products are "FOR RESEARCH USE ONLY. NOT FOR USE IN DIAGNOSTIC PROCEDURES"

### Our Abpromise to you: Quality guaranteed and expert technical support

- Replacement or refund for products not performing as stated on the datasheet
- Valid for 12 months from date of delivery
- Response to your inquiry within 24 hours
- We provide support in Chinese, English, French, German, Japanese and Spanish
- Extensive multi-media technical resources to help you

- We investigate all quality concerns to ensure our products perform to the highest standards

If the product does not perform as described on this datasheet, we will offer a refund or replacement. For full details of the Abpromise, please visit <https://www.abcam.cn/abpromise> or contact our technical team.

### **Terms and conditions**

---

- Guarantee only valid for products bought direct from Abcam or one of our authorized distributors