

### Anti-Nestin antibody [2C1.3A11] ab18102

敲除 验证

★★★★★ [1 Abreviews](#) [22 References](#) [7 图像](#)

#### 概述

产品名称	Anti-Nestin抗体[2C1.3A11]
描述	小鼠单克隆抗体[2C1.3A11] to Nestin
宿主	Mouse
经测试应用	适用于: ICC/IF, WB, Flow Cyt, IHC-P
种属反应性	与反应: Human 不与反应: Rat
免疫原	A 150 amino acid fragment from the cloned human Nestin.
常规说明	<p>This highly specific antibody to human nestin can aid in characterizing progenitor cells differentiating into distinct lineages, in enhancing the therapeutic potential of human neural stem/progenitor cells in the treatment of CNS diseases or injury, and in identifying neuroepithelial tumor cells.</p> <p>The Life Science industry has been in the grips of a reproducibility crisis for a number of years. Abcam is leading the way in addressing this with our range of recombinant monoclonal antibodies and knockout edited cell lines for gold-standard validation. Please check that this product meets your needs before purchasing.</p> <p>If you have any questions, special requirements or concerns, please send us an inquiry and/or contact our Support team ahead of purchase. Recommended alternatives for this product can be found below, along with publications, customer reviews and Q&amp;As</p>

#### 性能

形式	Liquid
存放说明	Shipped at 4°C. Store at +4°C short term (1-2 weeks). Upon delivery aliquot. Store at -20°C or -80°C. Avoid freeze / thaw cycle.
存储溶液	Preservative: 0.1% Sodium azide Constituent: PBS
纯度	Protein G purified
Primary antibody说明	This highly specific antibody to human nestin can aid in characterizing progenitor cells

differentiating into distinct lineages, in enhancing the therapeutic potential of human neural stem/progenitor cells in the treatment of CNS diseases or injury, and in identifying neuroepithelial tumor cells.

克隆 单克隆  
克隆编号 2C1.3A11  
同种型 IgG1

## 应用

**The Abpromise guarantee** Abpromise™ 承诺保证使用ab18102于以下的经测试应用

“应用说明”部分 下显示的仅为推荐的起始稀释度;实际最佳的稀释度/浓度应由使用者检定。

应用	Ab评论	说明
ICC/IF		1/100 - 1/500.
WB		1/1000 - 1/5000. Predicted molecular weight: 177 kDa.
Flow Cyt	★★★★★ (1)	1/200. <u>ab170190</u> - Mouse monoclonal IgG1, is suitable for use as an isotype control with this antibody.
IHC-P		Use at an assay dependent concentration.

## 靶标

**功能** Required for brain and eye development. Promotes the disassembly of phosphorylated vimentin intermediate filaments (IF) during mitosis and may play a role in the trafficking and distribution of IF proteins and other cellular factors to daughter cells during progenitor cell division. Required for survival, renewal and mitogen-stimulated proliferation of neural progenitor cells.

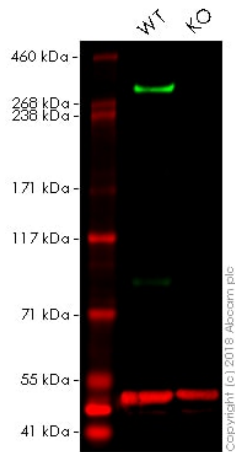
**组织特异性** CNS stem cells.

**序列相似性** Belongs to the intermediate filament family.

**发展阶段** Upon terminal neural differentiation, nestin is down-regulated and replaced by neurofilaments.

**翻译后修饰** Constitutively phosphorylated. This increases during mitosis when the cytoplasmic intermediate filament network is reorganized.

## 图片



Western blot - Anti-Nestin antibody [2C1.3A11]  
(ab18102)

**All lanes :** Anti-Nestin antibody [2C1.3A11] (ab18102) at 1/5000 dilution

**Lane 1 :** Wild-type HAP1 whole cell lysate

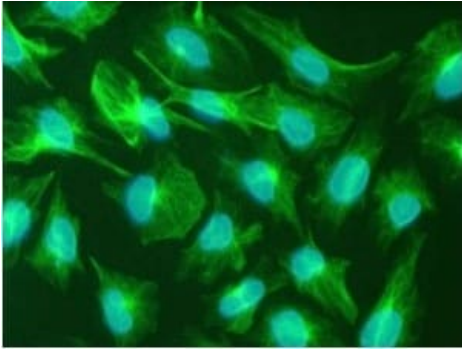
**Lane 2 :** NES knockout HAP1 whole cell lysate

Lysates/proteins at 20 µg per lane.

**Predicted band size:** 177 kDa

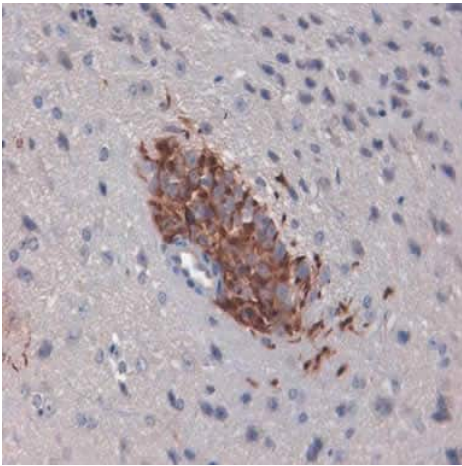
**Lanes 1 - 2:** Merged signal (red and green). Green - ab18102 observed at 300 kDa. Red - loading control, **ab176560**, observed at 50 kDa.

ab18102 was shown to recognize NES in wild-type HAP1 cells as signal was lost at the expected MW in NES knockout cells. Additional cross-reactive bands were observed in the wild-type and knockout cells. Wild-type and NES knockout samples were subjected to SDS-PAGE. Ab18102 and **ab176560** (Rabbit anti-alpha Tubulin loading control) were incubated overnight at 4°C at 1/5000 dilution and 1/20000 dilution respectively. Blots were developed with Goat anti-Mouse IgG H&L (IRDye® 800CW) preabsorbed **ab216772** and Goat anti-Rabbit IgG H&L (IRDye® 680RD) preabsorbed **ab216777** secondary antibodies at 1/20000 dilution for 1 hour at room temperature before imaging.



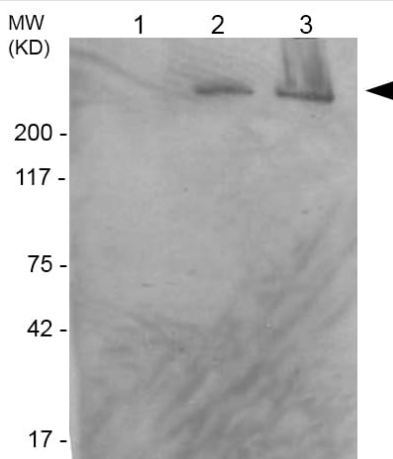
Immunocytochemistry/ Immunofluorescence - Anti-Nestin antibody [2C1.3A11] (ab18102)

Immunofluorescence staining of U251 cells (glioblastoma cell line) stained using ab18102(green) and bisbenzamide (blue)



Immunohistochemistry (Formalin/PFA-fixed paraffin-embedded sections) - Anti-Nestin antibody [2C1.3A11] (ab18102)

Immunohistochemistry (Formalin/PFA-fixed paraffin-embedded sections) analysis of migrating tumor cells labelling Nestin with ab18102 at 2µg/ml. Cytoplasm and membrane positive staining shown.



Western blot - Anti-Nestin antibody [2C1.3A11] (ab18102)

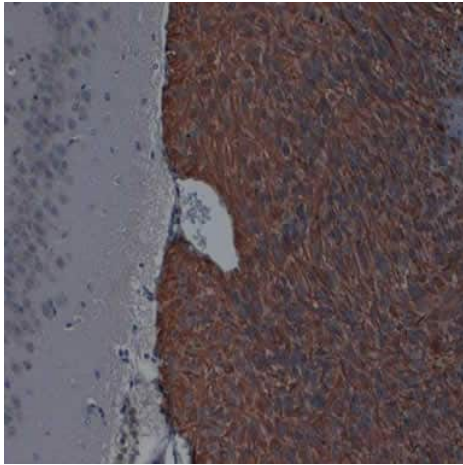
**All lanes :** Anti-Nestin antibody [2C1.3A11] (ab18102) at 1/1000 dilution

**Lane 1 :** Total rat brain protein at 5 µg

**Lane 2 :** Human CNS progenitor cell protein at 1 µg

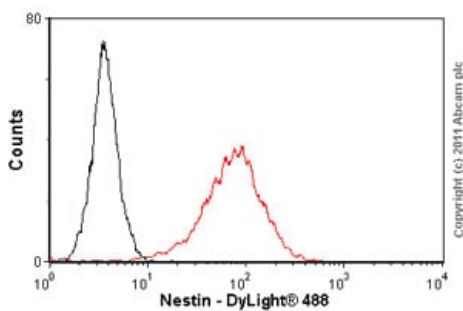
**Lane 3 :** Human CNS progenitor cell protein at 5 µg

**Predicted band size:** 177 kDa



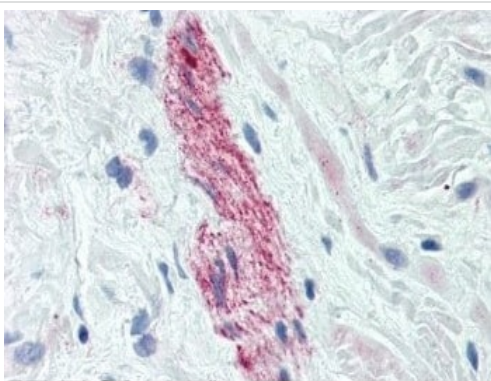
Immunohistochemistry (Formalin/PFA-fixed paraffin-embedded sections) - Anti-Nestin antibody [2C1.3A11] (ab18102)

Immunohistochemistry (Formalin/PFA-fixed paraffin-embedded sections) analysis of xenograft tumor cells labelling Nestin with ab18102.



Flow Cytometry - Anti-Nestin antibody [2C1.3A11] (ab18102)

Overlay histogram showing SH-SY5Y cells stained with ab18102 (red line). The cells were fixed with 4% paraformaldehyde (10 min) and then permeabilized with 0.1% PBS-Tween for 20 min. The cells were then incubated in 1x PBS / 10% normal goat serum / 0.3M glycine to block non-specific protein-protein interactions followed by the antibody (ab18102, 1/200 dilution) for 30 min at 22°C. The secondary antibody used was DyLight® 488 goat anti-mouse IgG (H+L) ([ab96879](#)) at 1/500 dilution for 30 min at 22°C. Isotype control antibody (black line) was mouse IgG1 [ICIGG1] ([ab91353](#), 2µg/1x10<sup>6</sup> cells) used under the same conditions. Acquisition of >5,000 events was performed.



Immunohistochemistry (Formalin/PFA-fixed paraffin-embedded sections) - Anti-Nestin antibody [2C1.3A11] (ab18102)

Immunohistochemistry of Anti-Nestin on formalin fixed paraffin embedded prostate nerve tissue using ab18102

**Please note:** All products are "FOR RESEARCH USE ONLY. NOT FOR USE IN DIAGNOSTIC PROCEDURES"

### **Our Abpromise to you: Quality guaranteed and expert technical support**

---

- Replacement or refund for products not performing as stated on the datasheet
- Valid for 12 months from date of delivery
- Response to your inquiry within 24 hours
  
- We provide support in Chinese, English, French, German, Japanese and Spanish
- Extensive multi-media technical resources to help you
- We investigate all quality concerns to ensure our products perform to the highest standards

If the product does not perform as described on this datasheet, we will offer a refund or replacement. For full details of the Abpromise, please visit <https://www.abcam.cn/abpromise> or contact our technical team.

### **Terms and conditions**

---

- Guarantee only valid for products bought direct from Abcam or one of our authorized distributors