

# Anti-Nesprin3 antibody ab74261

[5 References](#) [1 图像](#)

### 概述

---

<b>产品名称</b>	Anti-Nesprin3抗体
<b>描述</b>	兔多克隆抗体to Nesprin3
<b>宿主</b>	Rabbit
<b>经测试应用</b>	<b>适用于:</b> WB
<b>种属反应性</b>	<b>与反应:</b> Human
<b>免疫原</b>	A synthesized peptide derived from an internal region of human Nesprin3.
<b>常规说明</b>	<p>The Life Science industry has been in the grips of a reproducibility crisis for a number of years. Abcam is leading the way in addressing this with our range of recombinant monoclonal antibodies and knockout edited cell lines for gold-standard validation. Please check that this product meets your needs before purchasing.</p> <p>If you have any questions, special requirements or concerns, please send us an inquiry and/or contact our Support team ahead of purchase. Recommended alternatives for this product can be found below, along with publications, customer reviews and Q&amp;As</p>

### 性能

---

<b>形式</b>	Liquid
<b>存放说明</b>	Shipped at 4°C. Upon delivery aliquot and store at -20°C. Avoid freeze / thaw cycles.
<b>存储溶液</b>	pH: 7.40 Preservative: 0.02% Sodium azide Constituents: 50% Glycerol (glycerin, glycerine), 0.87% Sodium chloride, PBS
<b>纯度</b>	Stabilizing agent.
<b>纯化说明</b>	Immunogen affinity purified The antibody was affinity purified from rabbit antiserum by affinity chromatography using epitopespecific immunogen.
<b>克隆</b>	多克隆
<b>同种型</b>	IgG

### 应用

---

## The Abpromise guarantee

**Abpromise™** 承诺保证使用 ab74261 于以下的经测试应用

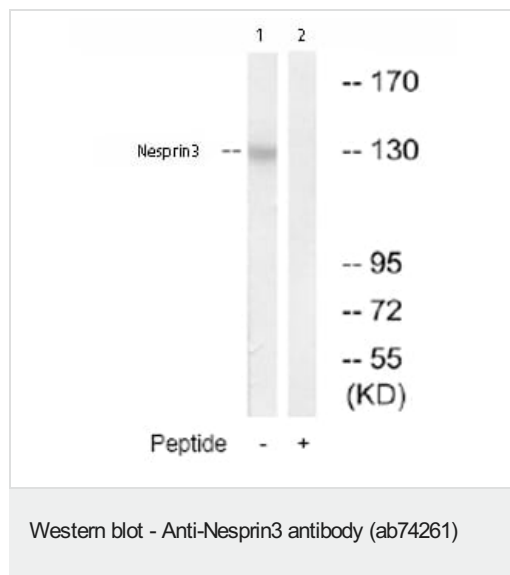
“应用说明”部分下显示的仅为推荐的起始稀释度；实际最佳的稀释度/浓度应由使用者检定。

应用	Ab评论	说明
WB		1/500 - 1/1000. Predicted molecular weight: 112 kDa.

## 靶标

<b>功能</b>	Component of SUN-protein-containing multivariate complexes also called LINC complexes which link the nucleoskeleton and cytoskeleton by providing versatile outer nuclear membrane attachment sites for cytoskeletal filaments. Involved in the maintenance of nuclear organization and structural integrity. Probable anchoring protein which tethers the nucleus to the cytoskeleton by binding PLEC which can associate with the intermediate filament system.
<b>序列相似性</b>	Belongs to the nesprin family. Contains 1 KASH domain. Contains 2 spectrin repeats.
<b>结构域</b>	The KASH domain is involved in the binding to SUN1 and SUN2 through recognition of their SUN domains.
<b>细胞定位</b>	Nucleus outer membrane. Located at the rough reticulum endoplasmic (RER) in some cells.

## 图片



**All lanes :** Anti-Nesprin3 antibody (ab74261) at 1/500 dilution

**Lane 1 :** Extracts from Jurkat cells

**Lane 2 :** Extracts from Jurkat cells plus 5µg immunizing peptide

Lysates/proteins at 5 µg per lane.

**Predicted band size:** 112 kDa

**Observed band size:** 112 kDa

**Please note:** All products are "FOR RESEARCH USE ONLY. NOT FOR USE IN DIAGNOSTIC PROCEDURES"

## Our Abpromise to you: Quality guaranteed and expert technical support

- Replacement or refund for products not performing as stated on the datasheet
- Valid for 12 months from date of delivery

- Response to your inquiry within 24 hours
- We provide support in Chinese, English, French, German, Japanese and Spanish
- Extensive multi-media technical resources to help you
- We investigate all quality concerns to ensure our products perform to the highest standards

If the product does not perform as described on this datasheet, we will offer a refund or replacement. For full details of the Abpromise, please visit <https://www.abcam.cn/abpromise> or contact our technical team.

### **Terms and conditions**

---

- Guarantee only valid for products bought direct from Abcam or one of our authorized distributors