


### Anti-Nephrin (phospho Y1217) antibody [EPTPG3] ab80298

**重组** RabMAb

**8 References**   **3 图像**

#### 概述

产品名称	Anti-Nephrin (phospho Y1217)抗体[EPTPG3]
描述	兔单克隆抗体[EPTPG3] to Nephrin (phospho Y1217)
宿主	Rabbit
经测试应用	<b>适用于:</b> WB, Dot blot
种属反应性	<b>与反应:</b> Human <b>预测可用于:</b> Mouse 
免疫原	Synthetic peptide within Mouse Nephrin (phospho Y1217). The exact sequence is proprietary.
阳性对照	WB: 293T transfected with myc-tagged human Nephrin and myc-tagged Src expression vectors.
常规说明	<p>This product has switched from a hybridoma to recombinant production method on 20th November 2023.</p> <p>This product is a recombinant monoclonal antibody, which offers several advantages including:</p> <ul style="list-style-type: none"><li>- High batch-to-batch consistency and reproducibility</li><li>- Improved sensitivity and specificity</li><li>- Long-term security of supply</li><li>- Animal-free production</li></ul> <p>For more information <a href="#">see here</a>.</p> <p>Our RabMAb<sup>®</sup> technology is a patented hybridoma-based technology for making rabbit monoclonal antibodies. For details on our patents, please refer to <a href="#">RabMAb<sup>®</sup> patents</a>.</p>

#### 性能

形式	Liquid
存放说明	Shipped at 4°C. Upon delivery aliquot and store at -20°C. Avoid freeze / thaw cycles.
存储溶液	pH: 7.20 Preservative: 0.01% Sodium azide Constituents: 0.05% BSA, 40% Glycerol (glycerin, glycerine), 59% PBS
纯度	Protein A purified
克隆	单克隆
克隆编号	EPTPG3

同种型

lgG

应用

The Abpromise guarantee

Abpromise™承诺保证使用ab80298于以下的经测试应用

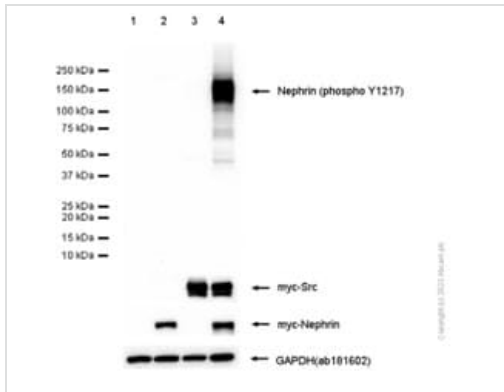
“应用说明”部分 下显示的仅为推荐的起始稀释度;实际最佳的稀释度/浓度应由使用者检定。

应用	Ab评论	说明
WB		1/10000. Detects a band of approximately 138 kDa (predicted molecular weight: 138 kDa).
Dot blot		1/1000.

靶标

功能	Seems to play a role in the development or function of the kidney glomerular filtration barrier. Regulates glomerular vascular permeability. May anchor the podocyte slit diaphragm to the actin cytoskeleton. Plays a role in skeletal muscle formation through regulation of myoblast fusion.
组织特异性	Specifically expressed in podocytes of kidney glomeruli.
疾病相关	Defects in NPHS1 are the cause of nephrotic syndrome type 1 (NPHS1) [MIM:256300]; also known as Finnish congenital nephrosis (CNF). A renal disease characterized clinically by proteinuria, hypoalbuminemia, hyperlipidemia, and edema. Kidney biopsies show non-specific histologic changes such as focal segmental glomerulosclerosis and diffuse mesangial proliferation. Some affected individuals have an inherited steroid-resistant form and progress to end-stage renal failure.
序列相似性	Belongs to the immunoglobulin superfamily. Contains 1 fibronectin type-III domain. Contains 8 Ig-like C2-type (immunoglobulin-like) domains.
发展阶段	In 23-week-old embryo found in epithelial podocytes of the periphery of mature and developing glomeruli.
翻译后修饰	Phosphorylated on tyrosine residues.
细胞定位	Cell membrane. Predominantly located at podocyte slit diaphragm between podocyte foot processes. Also associated with podocyte apical plasma membrane.

图片



Western blot - Anti-Nephtrin (phospho Y1217)  
antibody [EPTPG3] (ab80298)

**All lanes :** Anti-Nephtrin (phospho Y1217) antibody [EPTPG3]  
(ab80298) at 1/10000 dilution

**Lane 1 :** 293T (Human embryonic kidney epithelial cell) transfected  
with a myc-tagged empty vector whole cell lysate

**Lane 2 :** 293T (Human embryonic kidney epithelial cell) transfected  
with a myc-tagged human Nephtrin expression vector, whole cell  
lysate

**Lane 3 :** 293T (Human embryonic kidney epithelial cell) transfected  
with a myc-tagged Src expression vector, whole cell lysate

**Lane 4 :** 293T (Human embryonic kidney epithelial cell) transfected  
with myc-tagged human Nephtrin and myc-tagged Src expression  
vectors, whole cell lysate

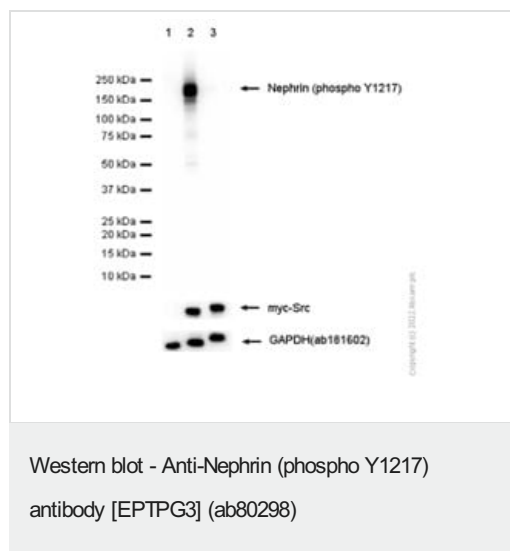
Lysates/proteins at 20 µg per lane.

**Predicted band size:** 138 kDa

**Observed band size:** 170 kDa

**Exposure time:** 3 seconds

Blocking and diluting buffer and concentration: 5% NFDM/TBST.



**All lanes :** Anti-Nephtrin (phospho Y1217) antibody [EPTPG3] (ab80298) at 1/10000 dilution

**Lane 1 :** 293T (Human embryonic kidney epithelial cell) transfected with a myc-tagged empty vector whole cell lysate

**Lane 2 :** 293T (Human embryonic kidney epithelial cell) transfected with with myc-tagged human Nephtrin and myc-tagged Src expression vectors, whole cell lysate

**Lane 3 :** 293T (Human embryonic kidney epithelial cell) transfected with myc-tagged human Nephtrin and myc-tagged Src expression vectors, whole cell lysate 15 µg. Then the membrane was incubated with Alkaline phosphatase

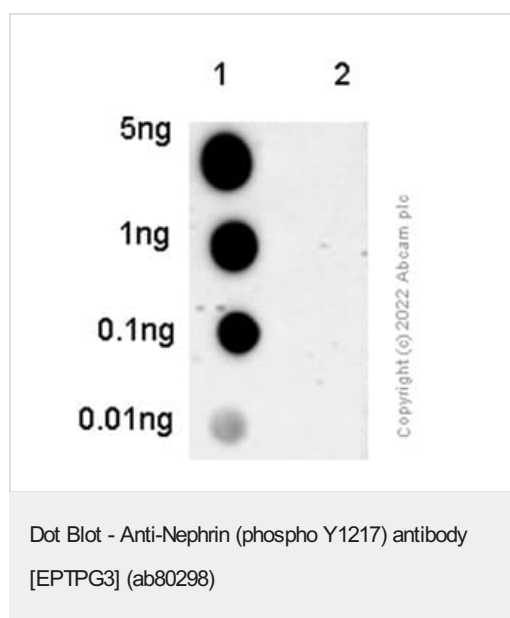
Lysates/proteins at 15 µg per lane.

**Predicted band size:** 138 kDa

**Observed band size:** 170 kDa

**Exposure time:** 3 seconds

Blocking and diluting buffer and concentration: 5% NFDM/TBST.



Dot blot analysis of Nephtrin (pY1217) peptide and Nephtrin non-phospho peptide labelling PKC alpha Nephtrin (pY1217) with ab80298 at a 1/1000 dilution. A peroxidase-conjugated goat anti-rabbit IgG (H+L) was used as the secondary antibody at a 1/20,000 dilution. Blocking and dilution buffer: 5% NFDM/TBST.

Lane 1: Nephtrin (pY1217) phospho peptide

Lane 2: Nephtrin non-phospho peptide

**Please note:** All products are "FOR RESEARCH USE ONLY. NOT FOR USE IN DIAGNOSTIC PROCEDURES"

**Our Abpromise to you: Quality guaranteed and expert technical support**

- Replacement or refund for products not performing as stated on the datasheet

- Valid for 12 months from date of delivery
- Response to your inquiry within 24 hours
- We provide support in Chinese, English, French, German, Japanese and Spanish
- Extensive multi-media technical resources to help you
- We investigate all quality concerns to ensure our products perform to the highest standards

If the product does not perform as described on this datasheet, we will offer a refund or replacement. For full details of the Abpromise, please visit <https://www.abcam.cn/abpromise> or contact our technical team.

## **Terms and conditions**

---

- Guarantee only valid for products bought direct from Abcam or one of our authorized distributors