


Anti-NEK6 antibody [EPR5283] ab133494

敲除验证 重组 RabMAb

8 References 3 图像

概述

产品名称	Anti-NEK6抗体[EPR5283]
描述	兔单克隆抗体[EPR5283] to NEK6
宿主	Rabbit
经测试应用	适用于: WB 不适用于: Flow Cyt
种属反应性	与反应: Human 预测可用于: Mouse, Rat 
免疫原	Synthetic peptide. This information is proprietary to Abcam and/or its suppliers.
阳性对照	WB: HepG2, HeLa, 293T and HT1080 cell lysates
常规说明	This product is a recombinant monoclonal antibody, which offers several advantages including: <ul style="list-style-type: none">- High batch-to-batch consistency and reproducibility- Improved sensitivity and specificity- Long-term security of supply- Animal-free production For more information see here . Our RabMAb [®] technology is a patented hybridoma-based technology for making rabbit monoclonal antibodies. For details on our patents, please refer to RabMAb[®] patents .

性能

形式	Liquid
存放说明	Shipped at 4°C. Store at -20°C. Stable for 12 months at -20°C.
存储溶液	pH: 7.2 Preservative: 0.05% Sodium azide Constituents: 0.1% BSA, 40% Glycerol (glycerin, glycerine), 9.85% Tris glycine, 50% Tissue culture supernatant
纯度	Protein A purified
克隆	单克隆
克隆编号	EPR5283

同种型

IgG

应用

The Abpromise guarantee

Abpromise™ 承诺保证使用 ab133494 于以下的经测试应用

“应用说明”部分 下显示的仅为推荐的起始稀释度;实际最佳的稀释度/浓度应由使用者检定。

应用	Ab评论	说明
WB		1/1000 - 1/10000. Predicted molecular weight: 36 kDa.

应用说明

Is unsuitable for Flow Cyt.

靶标

功能

Activated during M phase. Required for chromosome segregation at metaphase-anaphase transition and therefore for mitotic progression. Inhibition of activity results in apoptosis. Phosphorylates KIF11 to promote mitotic spindle formation.

组织特异性

Ubiquitous, with highest expression in heart and skeletal muscle.

序列相似性

Belongs to the protein kinase superfamily. NEK Ser/Thr protein kinase family. NIMA subfamily. Contains 1 protein kinase domain.

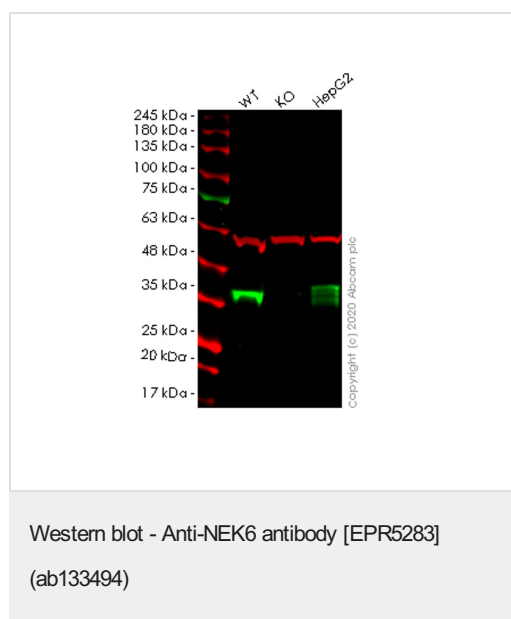
翻译后修饰

Autophosphorylated.

细胞定位

Cytoplasm. Nucleus.

图片



All lanes : Anti-NEK6 antibody [EPR5283] (ab133494) at 1/1000 dilution

Lane 1 : Wild-type HeLa cell lysate

Lane 2 : NEK6 knockout HeLa cell lysate

Lane 3 : HepG2 cell lysate

Lysates/proteins at 20 µg per lane.

Secondary

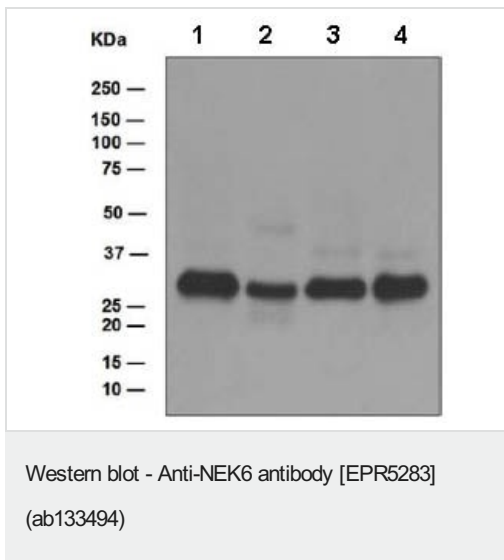
All lanes : Goat anti-Rabbit IgG H&L (IRDye® 800CW) preadsorbed (**ab216773**) at 1/10000 dilution

Predicted band size: 36 kDa

Lanes 1-3: Merged signal (red and green). Green - ab133494

observed at 36 kDa. Red - loading control **ab7291** observed at 50 kDa.

ab133494 Anti-NEK6 antibody [EPR5283] was shown to specifically react with NEK6 in wild-type HeLa cells. Loss of signal was observed when knockout cell line **ab265910** (knockout cell lysate **ab258072**) was used. Wild-type and NEK6 knockout samples were subjected to SDS-PAGE. ab133494 and Anti-alpha Tubulin antibody [DM1A] - Loading Control (**ab7291**) were incubated overnight at 4°C at 1 in 1000 dilution and 1 in 20000 dilution respectively. Blots were developed with Goat anti-Rabbit IgG H&L (IRDye® 800CW) preadsorbed (**ab216773**) and Goat anti-Mouse IgG H&L (IRDye® 680RD) preadsorbed (**ab216776**) secondary antibodies at 1 in 20000 dilution for 1 hour at room temperature before imaging.



All lanes : Anti-NEK6 antibody [EPR5283] (ab133494) at 1/1000 dilution

Lane 1 : HepG2 cell lysate

Lane 2 : HeLa cell lysate

Lane 3 : 293T cell lysate

Lane 4 : HT1080 cell lysate

Lysates/proteins at 10 µg per lane.

Secondary

All lanes : HRP labelled goat anti-rabbit at 1/2000 dilution

Predicted band size: 36 kDa

Why choose a recombinant antibody?



Research with confidence
Consistent and reproducible results



Long-term and scalable supply
Recombinant technology



Success from the first experiment
Confirmed specificity



Ethical standards compliant
Animal-free production

Anti-NEK6 antibody [EPR5283] (ab133494)

Please note: All products are "FOR RESEARCH USE ONLY. NOT FOR USE IN DIAGNOSTIC PROCEDURES"

Our Abpromise to you: Quality guaranteed and expert technical support

- Replacement or refund for products not performing as stated on the datasheet
- Valid for 12 months from date of delivery
- Response to your inquiry within 24 hours
- We provide support in Chinese, English, French, German, Japanese and Spanish
- Extensive multi-media technical resources to help you
- We investigate all quality concerns to ensure our products perform to the highest standards

If the product does not perform as described on this datasheet, we will offer a refund or replacement. For full details of the Abpromise, please visit <https://www.abcam.cn/abpromise> or contact our technical team.

Terms and conditions

- Guarantee only valid for products bought direct from Abcam or one of our authorized distributors