

# Anti-NEK2 antibody ab115731

[6 References](#) [2 图像](#)

### 概述

产品名称	Anti-NEK2抗体
描述	兔多克隆抗体to NEK2
宿主	Rabbit
经测试应用	适用于: ELISA, ICC/IF, WB, IHC-P
种属反应性	与反应: Human
免疫原	Synthetic peptide: GRQLGEPEKSQDS conjugated to KLH, corresponding to amino acids 287-299 of Human NEK2 <a href="#">Run BLAST with</a> <a href="#">Run BLAST with</a>
阳性对照	Human testis tissue; Human colon tissue
常规说明	<p>The Life Science industry has been in the grips of a reproducibility crisis for a number of years. Abcam is leading the way in addressing this with our range of recombinant monoclonal antibodies and knockout edited cell lines for gold-standard validation. Please check that this product meets your needs before purchasing.</p> <p>If you have any questions, special requirements or concerns, please send us an inquiry and/or contact our Support team ahead of purchase. Recommended alternatives for this product can be found below, along with publications, customer reviews and Q&amp;As</p>

### 性能

形式	Liquid
存放说明	Shipped at 4°C. Upon delivery aliquot and store at -20°C. Avoid freeze / thaw cycles.
存储溶液	pH: 7.20 Preservative: 0.01% Sodium azide Constituents: 0.424% Potassium phosphate, 0.88% Sodium chloride
纯度	Immunogen affinity purified
克隆	多克隆
同种型	IgG

### 应用

**The Abpromise guarantee****Abpromise™** 承诺保证使用ab115731于以下的经测试应用

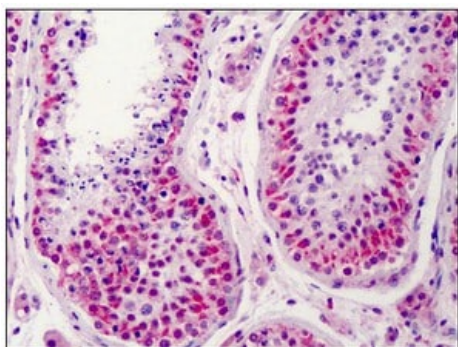
“应用说明”部分 下显示的仅为推荐的起始稀释度;实际最佳的稀释度/浓度应由使用者检定。

应用	Ab评论	说明
ELISA		Use at an assay dependent concentration.
ICC/IF		Use at an assay dependent concentration.
WB		Use at an assay dependent concentration. Predicted molecular weight: 52 kDa.
IHC-P		Use a concentration of 2.5 µg/ml. Perform heat mediated antigen retrieval with citrate buffer pH 6 before commencing with IHC staining protocol.

**靶标**

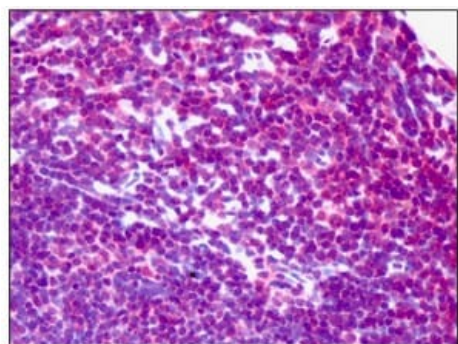
<b>功能</b>	Protein kinase that is involved in mitotic regulation. Integral component of the mitotic spindle-assembly checkpoint which is necessary for proper chromosome segregation during metaphase-anaphase transition. Required for association of MAD2L1 to kinetochore. Phosphorylates SGOL1. May have a role at the G2-M transition. May also play a role in meiosis. Isoform 1 but not isoform 2 appears to play a role in centrosome splitting. Isoform 1 phosphorylates and activates NEK11 in G1/S-arrested cells. Isoform 2, which is not present in the nucleolus, does not.
<b>组织特异性</b>	Isoform 1 and isoform 2 are expressed in peripheral blood T-cells and a wide variety of transformed cell types.
<b>序列相似性</b>	Belongs to the protein kinase superfamily. NEK Ser/Thr protein kinase family. NIMA subfamily. Contains 1 protein kinase domain.
<b>发展阶段</b>	Accumulates throughout S phase and shows maximal levels in late G2. This expression pattern is highly reminiscent of that of A and B cyclins. Isoform 1 and isoform 2 expression is low in the G1 phase and increases in the S/G2 phases. Isoform 1 is absent from cells arrested in the G2/M prometaphase. Isoform 2 remains present in cells arrested in the G2/M prometaphase.
<b>翻译后修饰</b>	It is unsure whether Thr-170 or Ser-171 is phosphorylated.
<b>细胞定位</b>	Cytoplasm. Predominantly cytoplasmic; Nucleus > nucleolus. Has a nucleolar targeting/ retention activity via a coiled-coil domain at the C-terminal end and Nucleus. Chromosome > centromere. Chromosome > centromere > kinetochore. Co-localizes with SGOL1 and MAD1L1 at the kinetochore. Not associated with kinetochore in the interphase but becomes associated with it upon the breakdown of the nuclear envelope.

**图片**



Immunohistochemistry (Formalin/PFA-fixed paraffin-embedded sections) - Anti-NEK2 antibody (ab115731)

ab115731 at 2.5ug/ml staining NEK2 in Human testis tissue by immunohistochemistry (FFPE). Following primary incubation slides were incubated with biotinylated anti-rabbit IgG secondary antibody, alkaline phosphatase-streptavidin and chromogen.



Immunohistochemistry (Formalin/PFA-fixed paraffin-embedded sections) - Anti-NEK2 antibody (ab115731)

ab115731 at 2.5ug/ml staining NEK2 in Human colon tissue by immunohistochemistry (FFPE). Following primary incubation slides were incubated with biotinylated anti-rabbit IgG secondary antibody, alkaline phosphatase-streptavidin and chromogen.

**Please note:** All products are "FOR RESEARCH USE ONLY. NOT FOR USE IN DIAGNOSTIC PROCEDURES"

### **Our Abpromise to you: Quality guaranteed and expert technical support**

---

- Replacement or refund for products not performing as stated on the datasheet
- Valid for 12 months from date of delivery
- Response to your inquiry within 24 hours
- We provide support in Chinese, English, French, German, Japanese and Spanish
- Extensive multi-media technical resources to help you
- We investigate all quality concerns to ensure our products perform to the highest standards

If the product does not perform as described on this datasheet, we will offer a refund or replacement. For full details of the Abpromise,

please visit <https://www.abcam.cn/abpromise> or contact our technical team.

## Terms and conditions

---

- Guarantee only valid for products bought direct from Abcam or one of our authorized distributors