

# Anti-Nedd8 antibody ab4751

## 2 图像

### 概述

产品名称	Anti-Nedd8抗体
描述	兔多克隆抗体to Nedd8
宿主	Rabbit
经测试应用	适用于: WB
种属反应性	与反应: <i>Saccharomyces cerevisiae</i> , Recombinant fragment
免疫原	Recombinant full length protein (S. <i>cerevisiae</i> ).
阳性对照	Most yeast cell lysates can be used as a positive control without induction or stimulation.
常规说明	<p>The Life Science industry has been in the grips of a reproducibility crisis for a number of years. Abcam is leading the way in addressing this with our range of recombinant monoclonal antibodies and knockout edited cell lines for gold-standard validation. Please check that this product meets your needs before purchasing.</p> <p>If you have any questions, special requirements or concerns, please send us an inquiry and/or contact our Support team ahead of purchase. Recommended alternatives for this product can be found below, along with publications, customer reviews and Q&amp;As</p>

### 性能

形式	Liquid
存放说明	Shipped at 4°C. Store at +4°C short term (1-2 weeks). Upon delivery aliquot. Store at -20°C or -80°C. Avoid freeze / thaw cycle.
存储溶液	Preservative: 0.01% Sodium azide Constituents: 0.42% Potassium phosphate, 0.87% Sodium chloride
纯度	IgG fraction
纯化说明	Purified from monospecific antiserum by a multi-step process which includes delipidation, salt fractionation and ion exchange chromatography followed by extensive dialysis against the buffer stated above. Assay by immunoelectrophoresis resulted in a single precipitin arc against anti-Rabbit Serum.
克隆	多克隆
同种型	IgG

应用

The Abpromise guarantee      **Abpromise™**承诺保证使用ab4751于以下的经测试应用

“应用说明”部分 下显示的仅为推荐的起始稀释度;实际最佳的稀释度/浓度应由使用者检定。

应用	Ab评论	说明
WB		

应用说明	ELISA: 1/2000 - 1/10000. WB: 1/1000. Detects a band of approximately 9.7 kDa.  Not tested in other applications. Optimal dilutions/concentrations should be determined by the end user.  This antibody using the specified conditions may recognize other prominent intrinsic bands (UBLs or conjugates). Other intrinsic bands are readily detectable at lower dilutions.
------	--

靶标

功能	Ubiquitin-like protein which plays an important role in cell cycle control and embryogenesis. Covalent attachment to its substrates requires prior activation by the E1 complex UBE1C-APPBP1 and linkage to the E2 enzyme UBE2M. Attachment of NEDD8 to cullins activates their associated E3 ubiquitin ligase activity, and thus promotes polyubiquitination and proteasomal degradation of cyclins and other regulatory proteins.
组织特异性	Highly expressed in heart, skeletal muscle, spleen, thymus, prostate, testis, ovary, colon and leukocytes.
序列相似性	Belongs to the ubiquitin family.
翻译后修饰	Cleavage of precursor form by UCHL3 or SENP8 is necessary for function.
细胞定位	Nucleus. Mainly nuclear.

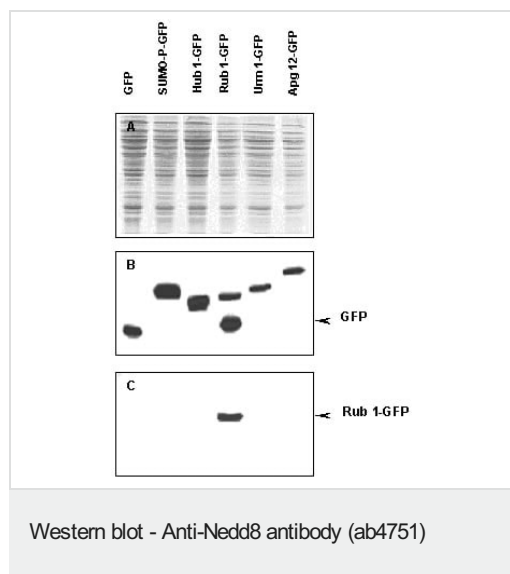
图片



ab4751 tested by immunoblot against a yeast cell lysate. A dilution of the antibody between 1:200 and 1:1,000 will show strong reactivity specifically with free Rub1 protein (indicated by arrow) and Rub1 conjugates. In this blot the antibody was used at a 1:500 dilution incubated overnight at 4° C in 5% non-fat dry milk in TTBS. Detection occurred using a 1:2000 dilution of Donkey polyclonal to Rabbit IgG (HRP) (**ab7083**) for 1 hour at room temperature. A chemiluminescence system was used for signal detection (Roche).

ab4751 tested by immunoblot against a yeast cell lysate. A dilution of the antibody between 1:200 and 1:1,000 will show strong reactivity specifically with free Rub1 protein (indicated by arrow) and Rub1 conjugates. In this blot the antibody was used at a 1:500 dilution incubated overnight at 4° C in 5% non-fat dry milk in TTBS.

Detection occurred using a 1:2000 dilution of Donkey polyclonal to Rabbit IgG (HRP) ([ab7083](#)) for 1 hour at r



Immunoblot of Rub1 fusion protein. Anti-Rub1 antibody generated by immunization with recombinant yeast Rub1 was tested by immunoblot against yeast lysates expressing the Rub1-GFP fusion protein and other UBL fusion proteins. All UBLs possess limited homology to Ubiquitin and to each other, therefore it is important to know the degree of reactivity of each antibody against each UBL. Panel A shows total protein staining using ponceau. Panel B shows positions of free GFP or GFP containing recombinant proteins present in each lysate preparation after reaction with a 1:1,000 dilution of Goat polyclonal to GFP ([ab6673](#)) followed by reaction with a 1:15,000 dilution of Donkey polyclonal to Goat IgG ([ab7125](#)). Panel C shows specific reaction with Rub1 using a 1:1,000 dilution of ab4751 followed by reaction with a 1:15,000 dilution of Goat polyclonal to Rabbit IgG (HRP) ([ab7090](#)). All primary antibodies were diluted in TTBS buffer supplemented with 5% non-fat mi

**Please note:** All products are "FOR RESEARCH USE ONLY. NOT FOR USE IN DIAGNOSTIC PROCEDURES"

## Our Abpromise to you: Quality guaranteed and expert technical support

- Replacement or refund for products not performing as stated on the datasheet
- Valid for 12 months from date of delivery
- Response to your inquiry within 24 hours
- We provide support in Chinese, English, French, German, Japanese and Spanish
- Extensive multi-media technical resources to help you
- We investigate all quality concerns to ensure our products perform to the highest standards

If the product does not perform as described on this datasheet, we will offer a refund or replacement. For full details of the Abpromise, please visit <https://www.abcam.cn/abpromise> or contact our technical team.

## Terms and conditions

- Guarantee only valid for products bought direct from Abcam or one of our authorized distributors