


Anti-NDUFS7 antibody ab105025

★★★★☆ [1 Abreviews](#) [2 References](#) [1 图像](#)

概述

产品名称	Anti-NDUFS7抗体
描述	山羊多克隆抗体to NDUFS7
宿主	Goat
经测试应用	适用于: WB, IHC-P
种属反应性	与反应: Human 预测可用于: Goat, Cow, Dog, Chimpanzee, Gorilla 
免疫原	Synthetic peptide: C-SRGEYVVAKLD , corresponding to internal sequence amino acids 58-68 of Human NDUFS7 (NP_077718.3) Run BLAST with Run BLAST with
阳性对照	WB: Human Heart lysate; IHC-P: Paraffin embedded Human Brain (Cortex) and Liver.
常规说明	<p>The Life Science industry has been in the grips of a reproducibility crisis for a number of years. Abcam is leading the way in addressing this with our range of recombinant monoclonal antibodies and knockout edited cell lines for gold-standard validation. Please check that this product meets your needs before purchasing.</p> <p>If you have any questions, special requirements or concerns, please send us an inquiry and/or contact our Support team ahead of purchase. Recommended alternatives for this product can be found below, along with publications, customer reviews and Q&As</p>

性能

形式	Liquid
存放说明	Shipped at 4°C. Upon delivery aliquot and store at -20°C. Avoid freeze / thaw cycles.
存储溶液	pH: 7.30 Preservative: 0.02% Sodium azide Constituents: 0.5% BSA, Tris buffered saline
纯度	Immunogen affinity purified
纯化说明	ab105025 was purified from goat serum by ammonium sulphate precipitation followed by antigen affinity chromatography using the immunizing peptide.
克隆	多克隆

同种型

IgG

应用

The Abpromise guarantee

Abpromise™ 承诺保证使用ab105025于以下的经测试应用

“应用说明”部分 下显示的仅为推荐的起始稀释度;实际最佳的稀释度/浓度应由使用者检定。

应用	Ab评论	说明
WB	★★★★☆ (1)	Use a concentration of 1 - 3 µg/ml. Detects a band of approximately 20 kDa (predicted molecular weight: 24 kDa). 1 hour primary incubation is recommended for this product.
IHC-P		Use a concentration of 5 µg/ml.

靶标

功能

Core subunit of the mitochondrial membrane respiratory chain NADH dehydrogenase (Complex I) that is believed to belong to the minimal assembly required for catalysis. Complex I functions in the transfer of electrons from NADH to the respiratory chain. The immediate electron acceptor for the enzyme is believed to be ubiquinone.

疾病相关

Leigh syndrome
Mitochondrial complex I deficiency

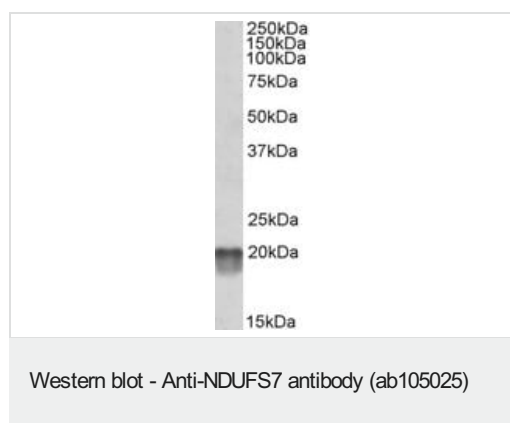
序列相似性

Belongs to the complex I 20 kDa subunit family.

细胞定位

Mitochondrion.

图片



Anti-NDUFS7 antibody (ab105025) at 0.1 µg/ml + Human Heart lysate (in RIPA buffer) at 35 µg

Developed using the ECL technique.

Predicted band size: 24 kDa

Primary incubation was 1 hour.

Please note: All products are "FOR RESEARCH USE ONLY. NOT FOR USE IN DIAGNOSTIC PROCEDURES"

Our Abpromise to you: Quality guaranteed and expert technical support

- Replacement or refund for products not performing as stated on the datasheet
- Valid for 12 months from date of delivery
- Response to your inquiry within 24 hours

- We provide support in Chinese, English, French, German, Japanese and Spanish
- Extensive multi-media technical resources to help you
- We investigate all quality concerns to ensure our products perform to the highest standards

If the product does not perform as described on this datasheet, we will offer a refund or replacement. For full details of the Abpromise, please visit <https://www.abcam.cn/abpromise> or contact our technical team.

Terms and conditions

- Guarantee only valid for products bought direct from Abcam or one of our authorized distributors