


Anti-NDP52 antibody ab68588

★★★★★ [3 Abreviews](#) [46 References](#) [3 图像](#)

概述

产品名称	Anti-NDP52抗体
描述	兔多克隆抗体to NDP52
宿主	Rabbit
特异性	Replenishment batches of ab68588 are tested in WB. Previous batches were additionally validated in ICC/IF, IHC-P and IP. These applications are still expected to work and are covered by our Abpromise guarantee.
经测试应用	适用于: ICC/IF, IHC-P, IP, WB
种属反应性	与反应: Human 预测可用于: Chimpanzee, Rhesus monkey, Orangutan 
免疫原	Synthetic peptide corresponding to Human NDP52 aa 350 to the C-terminus conjugated to keyhole limpet haemocyanin. (Peptide available as ab68587)
常规说明	<p>The Life Science industry has been in the grips of a reproducibility crisis for a number of years. Abcam is leading the way in addressing this with our range of recombinant monoclonal antibodies and knockout edited cell lines for gold-standard validation. Please check that this product meets your needs before purchasing.</p> <p>If you have any questions, special requirements or concerns, please send us an inquiry and/or contact our Support team ahead of purchase. Recommended alternatives for this product can be found below, along with publications, customer reviews and Q&As</p>

性能

形式	Liquid
存放说明	Shipped at 4°C. Store at +4°C short term (1-2 weeks). Upon delivery aliquot. Store at -20°C or -80°C. Avoid freeze / thaw cycle.
存储溶液	pH: 7.40 Preservative: 0.02% Sodium azide Constituent: PBS
	Batches of this product that have a concentration < 1mg/ml may have BSA added as a stabilising agent. If you would like information about the formulation of a specific lot, please contact our scientific support team who will be happy to help.

纯度	Immunogen affinity purified
克隆	多克隆
同种型	IgG

应用

The Abpromise guarantee **Abpromise™**承诺保证使用ab68588于以下的经测试应用

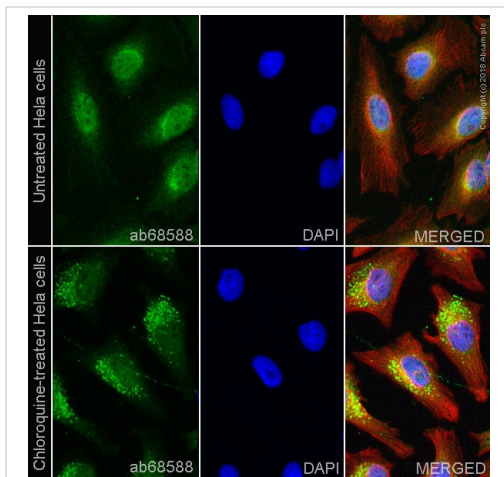
“应用说明”部分 下显示的仅为推荐的起始稀释度;实际最佳的稀释度/浓度应由使用者检定。

应用	Ab评论	说明
ICC/IF	★★★★★ (1)	Use a concentration of 5 µg/ml.
IHC-P		Use a concentration of 5 µg/ml.
IP		Use at an assay dependent concentration. PubMed: 23209807
WB	★★★★★ (2)	Use a concentration of 1 µg/ml. Detects a band of approximately 55 kDa (predicted molecular weight: 52 kDa).

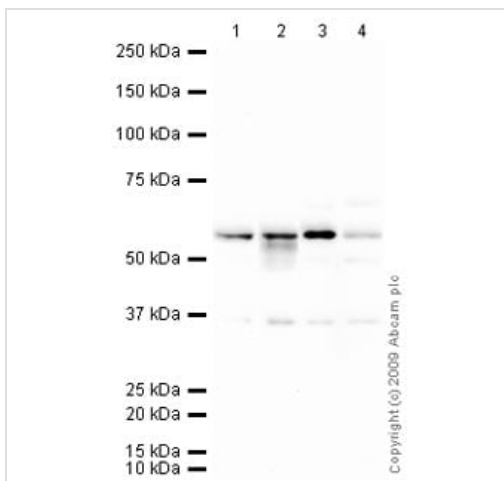
靶标

功能	May play a role in ruffle formation and actin cytoskeleton organization. Seems to negatively regulate constitutive secretion.
组织特异性	Expressed in all tissues tested with highest expression in skeletal muscle and lowest in brain.
细胞定位	Cytoplasm > perinuclear region. Golgi apparatus. Cytoplasm > cytoskeleton. According to PubMed:7540613, localizes to nuclear dots. According to PubMed:9230084 and PubMed:12869526, it is not a nuclear dot-associated protein but localizes predominantly in the cytoplasm with a coarse-grained distribution preferentially close to the nucleus.

图片



Immunocytochemistry/ Immunofluorescence - Anti-NDP52 antibody (ab68588)



Western blot - Anti-NDP52 antibody (ab68588)

ab68588 staining NDP52 in HeLa cells +/- Chloroquine (50 μ M, 24 hours). The cells were fixed with 4% paraformaldehyde (10 min), permeabilized with 0.1% Triton X-100 for 5 minutes and then blocked with 1% BSA/10% normal goat serum/0.3M glycine in 0.1% PBS-Tween for 1h. The cells were then incubated overnight at +4°C with ab68588 at 5 μ g/ml and **ab7291**, Mouse monoclonal [DM1A] to alpha Tubulin - Loading Control, at 1/1000 dilution. The secondary antibodies were **ab150081** (colored green) and **ab150120** (pseudo-colored red) used at 1/1000 dilution for 1 hour at room temperature. DAPI was used to stain the cell nuclei (colored blue) at a concentration of 1.43 μ M for 1 hour at room temperature.

All lanes : Anti-NDP52 antibody (ab68588) at 1 μ g/ml

Lane 1 : TE 671 (Human Rhabdomyosarcoma) Whole Cell Lysate

Lane 2 : HeLa Whole Cell Lysate - Hydroxyurea Treated (48hr, 2 μ M)

Lane 3 : Ramos (Human Burkitt's lymphoma cell line) Whole Cell Lysate

Lane 4 : Human placenta tissue lysate - total protein (**ab29745**)

Lysates/proteins at 10 μ g per lane.

Secondary

All lanes : Goat polyclonal to Rabbit IgG - H&L - Pre-Adsorbed (HRP) at 1/3000 dilution

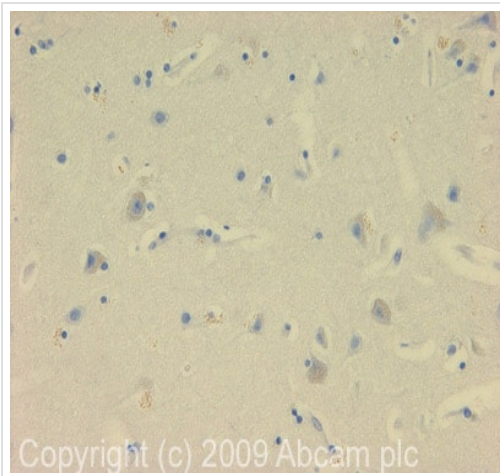
Developed using the ECL technique.

Performed under reducing conditions.

Predicted band size: 52 kDa

Observed band size: 55 kDa

Exposure time: 5 minutes



Immunohistochemistry (Formalin/PFA-fixed paraffin-embedded sections) - Anti-NDP52 antibody (ab68588)

IHC image of NDP52 staining in Human Cerebral Cortex FFPE section, performed on a BondTM system using the standard protocol F. The section was pre-treated using heat mediated antigen retrieval with sodium citrate buffer (pH6, epitope retrieval solution 1) for 20 mins. The section was then incubated with ab68588, 5µg/ml, for 15 mins at room temperature and detected using an HRP conjugated compact polymer system. DAB was used as the chromogen. The section was then counterstained with haematoxylin and mounted with DPX

Please note: All products are "FOR RESEARCH USE ONLY. NOT FOR USE IN DIAGNOSTIC PROCEDURES"

Our Abpromise to you: Quality guaranteed and expert technical support

- Replacement or refund for products not performing as stated on the datasheet
- Valid for 12 months from date of delivery
- Response to your inquiry within 24 hours
- We provide support in Chinese, English, French, German, Japanese and Spanish
- Extensive multi-media technical resources to help you
- We investigate all quality concerns to ensure our products perform to the highest standards

If the product does not perform as described on this datasheet, we will offer a refund or replacement. For full details of the Abpromise, please visit <https://www.abcam.cn/abpromise> or contact our technical team.

Terms and conditions

- Guarantee only valid for products bought direct from Abcam or one of our authorized distributors