

# Anti-ND6 antibody ab198784

## 2 图像

### 概述

---

产品名称	Anti-ND6抗体
描述	兔多克隆抗体to ND6
宿主	Rabbit
经测试应用	适用于: IHC-P
种属反应性	与反应: Human
免疫原	Synthetic peptide within Human ND6 (internal sequence). The exact sequence is proprietary. Database link: <a href="#">P03923</a>
阳性对照	Human colon and thyroid cancer tissue
常规说明	<p>The Life Science industry has been in the grips of a reproducibility crisis for a number of years. Abcam is leading the way in addressing this with our range of recombinant monoclonal antibodies and knockout edited cell lines for gold-standard validation. Please check that this product meets your needs before purchasing.</p> <p>If you have any questions, special requirements or concerns, please send us an inquiry and/or contact our Support team ahead of purchase. Recommended alternatives for this product can be found below, along with publications, customer reviews and Q&amp;As</p>

### 性能

---

形式	Liquid
存放说明	Shipped at 4°C. Store at +4°C short term (1-2 weeks). Upon delivery aliquot. Store at -20°C long term. Avoid freeze / thaw cycle.
存储溶液	pH: 7.4 Preservative: 0.05% Sodium azide Constituents: 49% PBS, 50% Glycerol (glycerin, glycerine)
纯度	Immunogen affinity purified
克隆	多克隆
同种型	IgG

### 应用

---

## The Abpromise guarantee

**Abpromise™** 承诺保证使用 ab198784 于以下的经测试应用

“应用说明”部分 下显示的仅为推荐的起始稀释度;实际最佳的稀释度/浓度应由使用者检定。

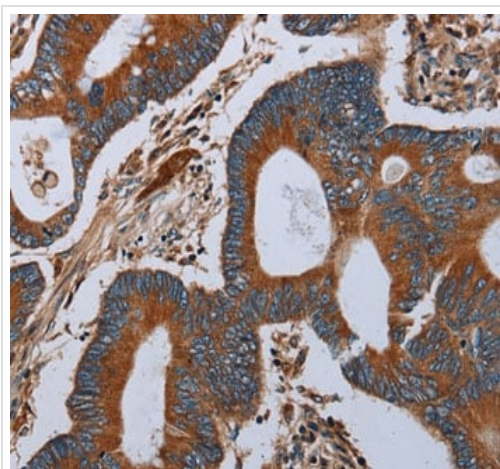
应用	Ab评论	说明
IHC-P		1/50 - 1/200.

## 靶标

**相关性** NADH Dehydrogenase subunit 6 (MTND6) is 1 of the 7 mitochondrial DNA (mtDNA) encoded subunits (MTND1, MTND2, MTND3, MTND4L, MTND4, MTND5, MTND6) included among the approximately 41 polypeptides of respiratory Complex I. Complex I accepts electrons from NADH, transfers them to ubiquinone (Coenzyme Q10), and uses the energy released to pump protons across the mitochondria inner membrane. MTND6 has been proposed to be a component of the iron-protein fragment. The predicted polypeptide has a molecular weight of 18.6 kD. Its apparent MW on SDS-polyacrylamide gels (PAGE) using Tris-glycine buffer is 16.7 kD, and the apparent MW on urea-phosphate gels is also close to the predicted molecular weight.

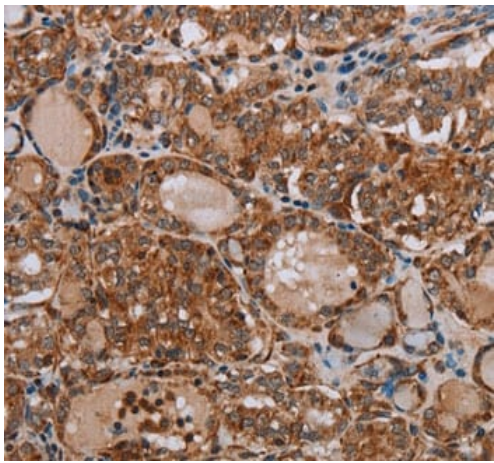
**细胞定位** Mitochondrion membrane; Multi-pass membrane protein.

## 图片



Immunohistochemical analysis of formalin fixed paraffin embedded human colon cancer labeling ND6 with ab198784 at 1/40

Immunohistochemistry (Formalin/PFA-fixed paraffin-embedded sections) - Anti-ND6 antibody (ab198784)



Immunohistochemical analysis of formalin fixed paraffin embedded human thyroid cancer labeling ND6 with ab198784 at 1/40

Immunohistochemistry (Formalin/PFA-fixed paraffin-embedded sections) - Anti-ND6 antibody (ab198784)

**Please note:** All products are "FOR RESEARCH USE ONLY. NOT FOR USE IN DIAGNOSTIC PROCEDURES"

### **Our Abpromise to you: Quality guaranteed and expert technical support**

---

- Replacement or refund for products not performing as stated on the datasheet
- Valid for 12 months from date of delivery
- Response to your inquiry within 24 hours
- We provide support in Chinese, English, French, German, Japanese and Spanish
- Extensive multi-media technical resources to help you
- We investigate all quality concerns to ensure our products perform to the highest standards

If the product does not perform as described on this datasheet, we will offer a refund or replacement. For full details of the Abpromise, please visit <https://www.abcam.cn/abpromise> or contact our technical team.

### **Terms and conditions**

---

- Guarantee only valid for products bought direct from Abcam or one of our authorized distributors