

Anti-NCKAP1 antibody ab198924

2 图像

概述

| | |
|--------------|---|
| 产品名称 | Anti-NCKAP1抗体 |
| 描述 | 兔多克隆抗体to NCKAP1 |
| 宿主 | Rabbit |
| 经测试应用 | 适用于: IHC-P |
| 种属反应性 | 与反应: Human |
| 免疫原 | Synthetic peptide corresponding to Human NCKAP1 (internal sequence). (NP_038464). Database link: Q9Y2A7 |
| 阳性对照 | Human liver cancer and brain tissues. |
| 常规说明 | <p>The Life Science industry has been in the grips of a reproducibility crisis for a number of years. Abcam is leading the way in addressing this with our range of recombinant monoclonal antibodies and knockout edited cell lines for gold-standard validation. Please check that this product meets your needs before purchasing.</p> <p>If you have any questions, special requirements or concerns, please send us an inquiry and/or contact our Support team ahead of purchase. Recommended alternatives for this product can be found below, along with publications, customer reviews and Q&As</p> |

性能

| | |
|-------------|---|
| 形式 | Liquid |
| 存放说明 | Shipped at 4°C. Store at +4°C short term (1-2 weeks). Upon delivery aliquot. Store at -20°C long term. Avoid freeze / thaw cycle. |
| 存储溶液 | pH: 7.4 Preservative: 0.05% Sodium azide Constituents: 49% PBS, 50% Glycerol (glycerin, glycerine) |
| 纯度 | Immunogen affinity purified |
| 克隆 | 多克隆 |
| 同种型 | IgG |

应用

The Abpromise guarantee

Abpromise™ 承诺保证使用 ab198924 于以下的经测试应用

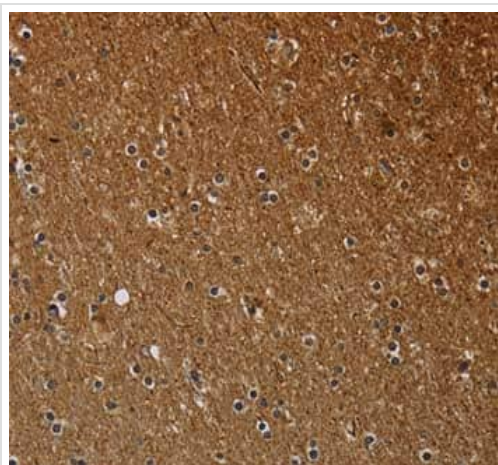
“应用说明”部分 下显示的仅为推荐的起始稀释度；实际最佳的稀释度/浓度应由使用者检定。

| 应用 | Ab评论 | 说明 |
|-------|------|---------------|
| IHC-P | | 1/25 - 1/100. |

靶标

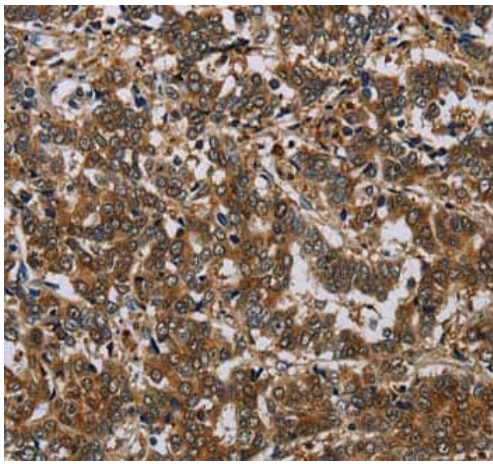
| | |
|--------------|---|
| 功能 | Part of the WAVE complex that regulates lamellipodia formation. The WAVE complex regulates actin filament reorganization via its interaction with the Arp2/3 complex. Actin remodeling activity is regulated by RAC1. |
| 组织特异性 | Expressed in all tissues examined except peripheral blood leukocytes, with highest expression in brain, heart, and skeletal muscle. |
| 序列相似性 | Belongs to the HEM-1/HEM-2 family. |
| 细胞定位 | Cell membrane. Cell projection > lamellipodium membrane. At the interface between the lamellipodial actin meshwork and the membrane. |

图片



Immunohistochemical analysis of paraffin-embedded Human brain tissue labeling NCKAP1 with ab198924 at 1/30 dilution.

Immunohistochemistry (Formalin/PFA-fixed paraffin-embedded sections) - Anti-NCKAP1 antibody (ab198924)



Immunohistochemical analysis of paraffin-embedded Human liver cancer tissue labeling NCKAP1 with ab198924 at 1/30 dilution.

Immunohistochemistry (Formalin/PFA-fixed paraffin-embedded sections) - Anti-NCKAP1 antibody (ab198924)

Please note: All products are "FOR RESEARCH USE ONLY. NOT FOR USE IN DIAGNOSTIC PROCEDURES"

Our Abpromise to you: Quality guaranteed and expert technical support

- Replacement or refund for products not performing as stated on the datasheet
- Valid for 12 months from date of delivery
- Response to your inquiry within 24 hours
- We provide support in Chinese, English, French, German, Japanese and Spanish
- Extensive multi-media technical resources to help you
- We investigate all quality concerns to ensure our products perform to the highest standards

If the product does not perform as described on this datasheet, we will offer a refund or replacement. For full details of the Abpromise, please visit <https://www.abcam.cn/abpromise> or contact our technical team.

Terms and conditions

- Guarantee only valid for products bought direct from Abcam or one of our authorized distributors