


### Anti-NCAM1 antibody ab95153

★★★★★ [2 Abreviews](#) [3 References](#) [2 图像](#)

#### 概述

产品名称	Anti-NCAM1抗体
描述	兔多克隆抗体to NCAM1
宿主	Rabbit
经测试应用	适用于: IHC-P, WB
种属反应性	与反应: Mouse, Rat 预测可用于: Chinese hamster 
免疫原	Synthetic peptide corresponding to Mouse NCAM1 aa 1050 to the C-terminus conjugated to keyhole limpet haemocyanin. (Peptide available as <a href="#">ab123829</a> )
阳性对照	This antibody gave a positive signal in the following tissue lysates: Mouse Brain; Mouse Forebrain; Mouse Hippocampus; Rat Brain; Rat Cerebellum; Rat Forebrain.
常规说明	<p>The Life Science industry has been in the grips of a reproducibility crisis for a number of years. Abcam is leading the way in addressing this with our range of recombinant monoclonal antibodies and knockout edited cell lines for gold-standard validation. Please check that this product meets your needs before purchasing.</p> <p>If you have any questions, special requirements or concerns, please send us an inquiry and/or contact our Support team ahead of purchase. Recommended alternatives for this product can be found below, along with publications, customer reviews and Q&amp;As</p>

#### 性能

形式	Liquid
存放说明	Shipped at 4°C. Store at +4°C short term (1-2 weeks). Upon delivery aliquot. Store at -20°C or -80°C. Avoid freeze / thaw cycle.
存储溶液	pH: 7.40 Preservative: 0.02% Sodium azide Constituent: PBS
	Batches of this product that have a concentration < 1mg/ml may have BSA added as a stabilising agent. If you would like information about the formulation of a specific lot, please contact our scientific support team who will be happy to help.

纯度	Immunogen affinity purified
克隆	多克隆
同种型	IgG

应用

The Abpromise guarantee      **Abpromise™**承诺保证使用ab95153于以下的经测试应用

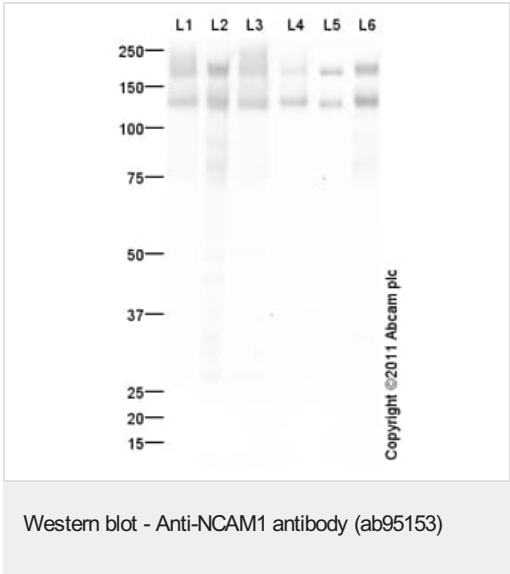
“应用说明”部分 下显示的仅为推荐的起始稀释度;实际最佳的稀释度/浓度应由使用者检定。

应用	Ab评论	说明
IHC-P	★★★★★ (1)	Use a concentration of 1 µg/ml.
WB		Use a concentration of 1 µg/ml. Detects a band of approximately 140,180 kDa (predicted molecular weight: 119 kDa).

靶标

功能	This protein is a cell adhesion molecule involved in neuron-neuron adhesion, neurite fasciculation, outgrowth of neurites, etc.
序列相似性	Contains 2 fibronectin type-III domains. Contains 5 Ig-like C2-type (immunoglobulin-like) domains.
细胞定位	Secreted and Cell membrane.

图片



**All lanes :** Anti-NCAM1 antibody (ab95153) at 1 µg/ml

- Lane 1 :** Brain (Mouse) Tissue Lysate
- Lane 2 :** Forebrain (Mouse) Tissue Lysate
- Lane 3 :** Mouse Hippocampus Tissue Lysate
- Lane 4 :** Brain (Rat) Tissue Lysate
- Lane 5 :** Cerebellum Rat Tissue Lysate
- Lane 6 :** Rat Forebrain

Lysates/proteins at 10 µg per lane.

**Secondary**  
**All lanes :** Goat Anti-Rabbit IgG H&L (HRP) preadsorbed (**ab97080**) at 1/5000 dilution

Developed using the ECL technique.

Performed under reducing conditions.

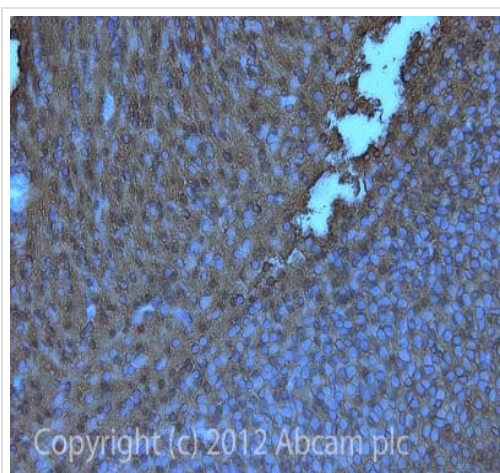
**Predicted band size:** 119 kDa

**Observed band size:** 140,180 kDa

**Exposure time:** 30 seconds

This antibody recognises isoforms NCAM140 and NCAM180, at 140 and 180 kDa respectively. NCAM contains a number of potential glycosylation sites (SwissProt) which may explain its migration at a higher molecular weight than predicted. This banding pattern has been observed in the literature PMID:21389209.

Abcam recommends using milk as the blocking agent. Abcam welcomes customer feedback and would appreciate any comments regarding this product and the data presented above.



Immunohistochemistry (Formalin/PFA-fixed paraffin-embedded sections) - Anti-NCAM1 antibody (ab95153)

IHC image of NCAM staining in Mouse foetal brain formalin fixed paraffin embedded tissue section, performed on a Leica Bond<sup>TM</sup> system using the standard protocol B. The section was pre-treated using heat mediated antigen retrieval with sodium citrate buffer (pH6, epitope retrieval solution 1) for 20 mins. The section was then incubated with ab95153, 1 µg/ml, for 15 mins at room temperature and detected using an HRP conjugated compact polymer system. DAB was used as the chromogen. The section was then counterstained with haematoxylin and mounted with DPX.

For other IHC staining systems (automated and non-automated) customers should optimize variable parameters such as antigen retrieval conditions, primary antibody concentration and antibody incubation times.

**Please note:** All products are "FOR RESEARCH USE ONLY. NOT FOR USE IN DIAGNOSTIC PROCEDURES"

### Our Abpromise to you: Quality guaranteed and expert technical support

- Replacement or refund for products not performing as stated on the datasheet
- Valid for 12 months from date of delivery
- Response to your inquiry within 24 hours
- We provide support in Chinese, English, French, German, Japanese and Spanish
- Extensive multi-media technical resources to help you

- We investigate all quality concerns to ensure our products perform to the highest standards

If the product does not perform as described on this datasheet, we will offer a refund or replacement. For full details of the Abpromise, please visit <https://www.abcam.cn/abpromise> or contact our technical team.

#### **Terms and conditions**

---

- Guarantee only valid for products bought direct from Abcam or one of our authorized distributors