

Anti-Nav1.8/SCN10A antibody ab66743

4 References 1 图像

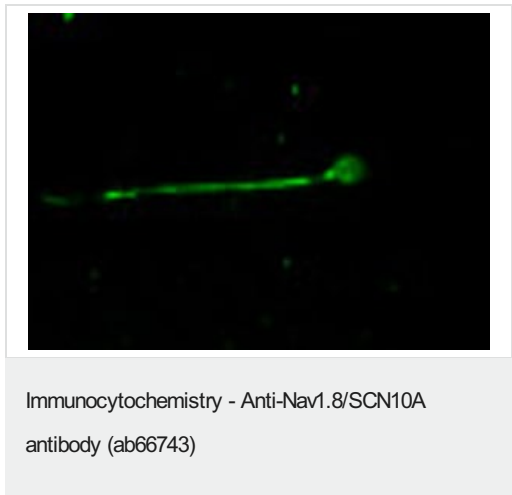
概述	
产品名称	Anti-Nav1.8/SCN10A抗体
描述	兔多克隆抗体to Nav1.8/SCN10A
宿主	Rabbit
经测试应用	适用于: ICC
种属反应性	与反应: Human
免疫原	Synthetic peptide corresponding to Nav1.8/SCN10A (C terminal).
常规说明	<p>The Life Science industry has been in the grips of a reproducibility crisis for a number of years. Abcam is leading the way in addressing this with our range of recombinant monoclonal antibodies and knockout edited cell lines for gold-standard validation. Please check that this product meets your needs before purchasing.</p> <p>If you have any questions, special requirements or concerns, please send us an inquiry and/or contact our Support team ahead of purchase. Recommended alternatives for this product can be found below, along with publications, customer reviews and Q&amp;As</p>
性能	
形式	Liquid
存放说明	Shipped at 4°C. Upon delivery aliquot and store at -20°C or -80°C. Avoid repeated freeze / thaw cycles.
存储溶液	Constituent: Whole serum
纯度	Whole antiserum
克隆	多克隆
同种型	IgG
应用	
The Abpromise guarantee	Abpromise™承诺保证使用ab66743于以下的经测试应用
“应用说明”部分 下显示的仅为推荐的起始稀释度;实际最佳的稀释度/浓度应由使用者检定。	

应用	Ab评论	说明
ICC		1/100 - 1/1000.

## 靶标

功能	Tetrodotoxin-resistant channel that mediates the voltage-dependent sodium ion permeability of excitable membranes. Assuming opened or closed conformations in response to the voltage difference across the membrane, the protein forms a sodium-selective channel through which sodium ions may pass in accordance with their electrochemical gradient. Plays a role in neuropathic pain mechanisms.
组织特异性	Expressed in the dorsal root ganglia and sciatic nerve.
疾病相关	Episodic pain syndrome, familial, 2
序列相似性	Belongs to the sodium channel (TC 1.A.1.10) family. Nav1.8/SCN10A subfamily. Contains 1 IQ domain.
结构域	The sequence contains 4 internal repeats, each with 5 hydrophobic segments (S1,S2,S3,S5,S6) and one positively charged segment (S4). Segments S4 are probably the voltage-sensors and are characterized by a series of positively charged amino acids at every third position.
翻译后修饰	Ubiquitinated by NEDD4L; which promotes its endocytosis. Phosphorylation at Ser-1451 by PKC in a highly conserved cytoplasmic loop slows inactivation of the sodium channel and reduces peak sodium currents.
细胞定位	Cell membrane. It can be translocated to the cell membrane through association with S100A10.

## 图片



Immunocytochemistry analysis of a human sperm cell labeling Nav1.8/SCN10A with ab66743 at 1/100 dilution.

**Please note:** All products are "FOR RESEARCH USE ONLY. NOT FOR USE IN DIAGNOSTIC PROCEDURES"

## Our Abpromise to you: Quality guaranteed and expert technical support

- Replacement or refund for products not performing as stated on the datasheet

- Valid for 12 months from date of delivery
- Response to your inquiry within 24 hours
- We provide support in Chinese, English, French, German, Japanese and Spanish
- Extensive multi-media technical resources to help you
- We investigate all quality concerns to ensure our products perform to the highest standards

If the product does not perform as described on this datasheet, we will offer a refund or replacement. For full details of the Abpromise, please visit <https://www.abcam.cn/abpromise> or contact our technical team.

#### **Terms and conditions**

---

- Guarantee only valid for products bought direct from Abcam or one of our authorized distributors