

Anti-Nav1.8/SCN10A antibody ab63331

2 References 2 图像

概述	
产品名称	Anti-Nav1.8/SCN10A抗体
描述	兔多克隆抗体to Nav1.8/SCN10A
宿主	Rabbit
经测试应用	适用于: ICC, WB, IHC-Fr
种属反应性	与反应: Rat
免疫原	Synthetic peptide corresponding to Nav1.8/SCN10A aa 1892-1956.
常规说明	<p>The Life Science industry has been in the grips of a reproducibility crisis for a number of years. Abcam is leading the way in addressing this with our range of recombinant monoclonal antibodies and knockout edited cell lines for gold-standard validation. Please check that this product meets your needs before purchasing.</p> <p>If you have any questions, special requirements or concerns, please send us an inquiry and/or contact our Support team ahead of purchase. Recommended alternatives for this product can be found below, along with publications, customer reviews and Q&As</p>

性能	
形式	Liquid
存放说明	Shipped at 4°C. Upon delivery aliquot and store at -20°C. Avoid freeze / thaw cycles.
存储溶液	Constituents: PBS, Whole serum
纯度	Whole antiserum
克隆	多克隆
同种型	IgG

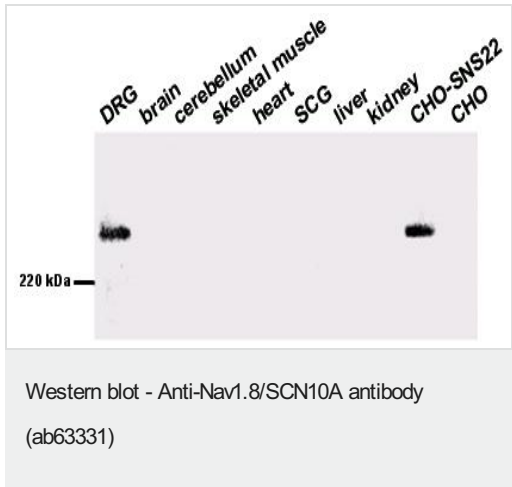
应用	
The Abpromise guarantee	<u>Abpromise™</u> 承诺保证使用ab63331于以下的经测试应用
“应用说明”部分 下显示的仅为推荐的起始稀释度;实际最佳的稀释度/浓度应由使用者检定。	

应用	Ab评论	说明
ICC		Use at an assay dependent concentration.
WB		1/4000. Predicted molecular weight: 217 kDa.
IHC-Fr		Use at an assay dependent concentration.

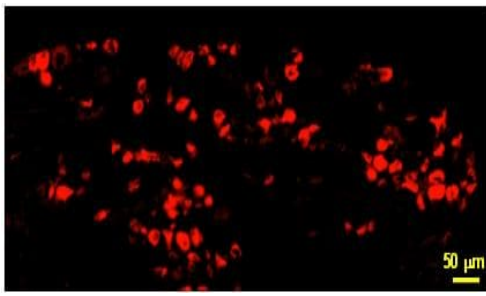
靶标

功能	Tetrodotoxin-resistant channel that mediates the voltage-dependent sodium ion permeability of excitable membranes. Assuming opened or closed conformations in response to the voltage difference across the membrane, the protein forms a sodium-selective channel through which sodium ions may pass in accordance with their electrochemical gradient. Plays a role in neuropathic pain mechanisms.
组织特异性	Expressed in the dorsal root ganglia and sciatic nerve.
疾病相关	Episodic pain syndrome, familial, 2
序列相似性	Belongs to the sodium channel (TC 1.A.1.10) family. Nav1.8/SCN10A subfamily. Contains 1 IQ domain.
结构域	The sequence contains 4 internal repeats, each with 5 hydrophobic segments (S1,S2,S3,S5,S6) and one positively charged segment (S4). Segments S4 are probably the voltage-sensors and are characterized by a series of positively charged amino acids at every third position.
翻译后修饰	Ubiquitinated by NEDD4L; which promotes its endocytosis. Phosphorylation at Ser-1451 by PKC in a highly conserved cytoplasmic loop slows inactivation of the sodium channel and reduces peak sodium currents.
细胞定位	Cell membrane. It can be translocated to the cell membrane through association with S100A10.

图片



Western blot analysis. A single band of strong NaV1.8/SCN10A-like immunoreactivity at approximately 240 kDa in the membrane fraction of rat DRG is shown. Note that membrane fractions of rat whole brain, cerebellum, skeletal muscle, heart, superior cervical ganglia, liver and kidney showed no detectable immunoreactivity. Membrane extract from CHO-SNS22 (a cell line stably transfected with rat NaV1.8/SCN10A cDNA) showed strong immunoreactivity at the same size with DRG. Non-transfected CHO cells did not show any bands.



Immunohistochemistry (Frozen sections) - Anti-Nav1.8/SCN10A antibody (ab63331)

Immunohistochemistry was performed on 2 week old rat lumbar DRG sections. Nav1.8/SCN10A-like immunoreactivity can be detected only in small diameter (<30 μm) neurons.

Please note: All products are "FOR RESEARCH USE ONLY. NOT FOR USE IN DIAGNOSTIC PROCEDURES"

Our Abpromise to you: Quality guaranteed and expert technical support

- Replacement or refund for products not performing as stated on the datasheet
- Valid for 12 months from date of delivery
- Response to your inquiry within 24 hours
- We provide support in Chinese, English, French, German, Japanese and Spanish
- Extensive multi-media technical resources to help you
- We investigate all quality concerns to ensure our products perform to the highest standards

If the product does not perform as described on this datasheet, we will offer a refund or replacement. For full details of the Abpromise, please visit <https://www.abcam.cn/abpromise> or contact our technical team.

Terms and conditions

- Guarantee only valid for products bought direct from Abcam or one of our authorized distributors