

Anti-NAT1 antibody [EPR3221(2)] ab109114

重组 RabMAb

5 References 4 图像

概述	
产品名称	Anti-NAT1抗体[EPR3221(2)]
描述	兔单克隆抗体[EPR3221(2)] to NAT1
宿主	Rabbit
经测试应用	适用于: WB, ICC/IF, Flow Cyt (Intra) 不适用于: IHC-P or IP
种属反应性	与反应: Human
免疫原	Synthetic peptide. This information is proprietary to Abcam and/or its suppliers.
阳性对照	U937, fetal liver, LnCaP, human bladder, and HT-1376 cell lysates and LN-CAP cells.
常规说明	<p>This product is a recombinant monoclonal antibody, which offers several advantages including:</p> <ul style="list-style-type: none">- High batch-to-batch consistency and reproducibility- Improved sensitivity and specificity- Long-term security of supply- Animal-free production <p>For more information see here.</p> <p>Our RabMAb[®] technology is a patented hybridoma-based technology for making rabbit monoclonal antibodies. For details on our patents, please refer to RabMAb[®] patents.</p> <p>Mouse, Rat: We have preliminary internal testing data to indicate this antibody may not react with these species. Please contact us for more information.</p>
性能	
形式	Liquid
存放说明	Shipped at 4°C. Store at -20°C. Stable for 12 months at -20°C.
存储溶液	pH: 7.20 Preservative: 0.05% Sodium azide Constituents: 0.1% BSA, 40% Glycerol (glycerin, glycerine), 9.85% Tris glycine, 50% Tissue culture supernatant
纯度	Protein A purified
克隆	单克隆

克隆编号EPR3221(2)

同种型IgG

应用

The Abpromise guarantee **Abpromise™**承诺保证使用ab109114于以下的经测试应用

“应用说明”部分 下显示的仅为推荐的起始稀释度;实际最佳的稀释度/浓度应由使用者检定。

应用	Ab评论	说明
WB		1/1000 - 1/10000. Predicted molecular weight: 34 kDa.
ICC/IF		1/100 - 1/250.
Flow Cyt (Intra)		1/100. ab172730 - Rabbit monoclonal IgG, is suitable for use as an isotype control with this antibody.

应用说明 Is unsuitable for IHC-P or IP.

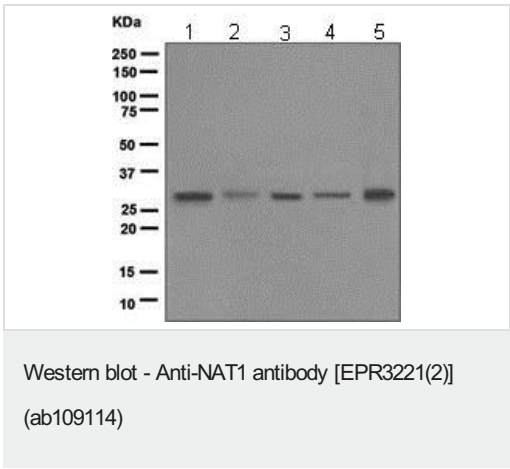
靶标

功能 Participates in the detoxification of a plethora of hydrazine and arylamine drugs. Catalyzes the N- or O-acetylation of various arylamine and heterocyclic amine substrates and is able to bioactivate several known carcinogens.

序列相似性 Belongs to the arylamine N-acetyltransferase family.

细胞定位 Cytoplasm.

图片



All lanes : Anti-NAT1 antibody [EPR3221(2)] (ab109114) at 1/1000 dilution

Lane 1 : U937 cell lysate

Lane 2 : Fetal liver cell lysate

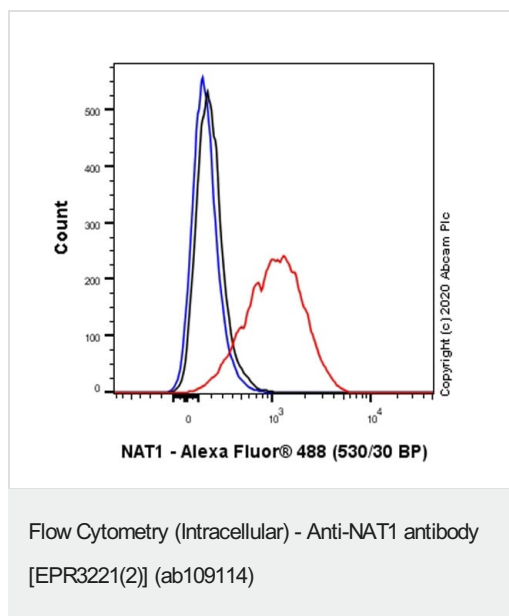
Lane 3 : LnCaP cell lysate

Lane 4 : Human bladder cell lysate

Lane 5 : HT-1376 cell lysate

Lysates/proteins at 10 µg per lane.

Predicted band size: 34 kDa



Flow Cytometry analysis of LNCaP (Human prostate carcinoma epithelial cell) cells labeling NAT1 with purified ab109114 at 1/100 dilution (10 µg/mL) (Red). Cells were fixed with 4% Paraformaldehyde and permeabilised with 90% Methanol. A Goat anti rabbit IgG (Alexa Fluor® 488, **ab150077**) secondary antibody was used at 1/2000. Isotype control - Rabbit monoclonal IgG (Black). Unlabeled control - Cell without incubation with primary antibody and secondary antibody (Blue).



Immunofluorescent staining of LN-CAP cells using anti-NAT1 at 1/100 (ab109114).

Why choose a recombinant antibody?

<p>Research with confidence Consistent and reproducible results</p>	<p>Long-term and scalable supply Recombinant technology</p>
<p>Success from the first experiment Confirmed specificity</p>	<p>Ethical standards compliant Animal-free production</p>

Anti-NAT1 antibody [EPR3221(2)] (ab109114)

Please note: All products are "FOR RESEARCH USE ONLY. NOT FOR USE IN DIAGNOSTIC PROCEDURES"

Our Abpromise to you: Quality guaranteed and expert technical support

- Replacement or refund for products not performing as stated on the datasheet

- Valid for 12 months from date of delivery
- Response to your inquiry within 24 hours
- We provide support in Chinese, English, French, German, Japanese and Spanish
- Extensive multi-media technical resources to help you
- We investigate all quality concerns to ensure our products perform to the highest standards

If the product does not perform as described on this datasheet, we will offer a refund or replacement. For full details of the Abpromise, please visit <https://www.abcam.cn/abpromise> or contact our technical team.

Terms and conditions

- Guarantee only valid for products bought direct from Abcam or one of our authorized distributors