

Anti-NARG1 antibody [434C2a] ab60065

2 References **1 图像**

概述

产品名称	Anti-NARG1抗体[434C2a]
描述	小鼠单克隆抗体[434C2a] to NARG1
宿主	Mouse
经测试应用	适用于: WB
种属反应性	与反应: Recombinant fragment
免疫原	Recombinant fragment (Human)
常规说明	<p>The Life Science industry has been in the grips of a reproducibility crisis for a number of years. Abcam is leading the way in addressing this with our range of recombinant monoclonal antibodies and knockout edited cell lines for gold-standard validation. Please check that this product meets your needs before purchasing.</p> <p>If you have any questions, special requirements or concerns, please send us an inquiry and/or contact our Support team ahead of purchase. Recommended alternatives for this product can be found below, along with publications, customer reviews and Q&As</p>

性能

形式	Liquid
存放说明	Shipped at 4°C. Upon delivery aliquot and store at -20°C. Avoid freeze / thaw cycles.
存储溶液	<p>pH: 7.40</p> <p>Preservative: 0.05% Sodium azide</p> <p>Constituents: PBS, 0.0225% Potassium chloride, 0.03% Potassium phosphate, 0.1312% Sodium phosphate, 0.812% Sodium chloride, 1% BSA</p>
纯度	Protein G purified
纯化说明	Purified using protein G column chromatography, from culture supernatant of hybridoma cultured in a medium containing bovine IgG-depleted (approximately 95%) fetal bovine serum.
克隆	单克隆
克隆编号	434C2a
同种型	IgG1

应用

The Abpromise guarantee

Abpromise™ 承诺保证使用ab60065于以下的经测试应用

“应用说明”部分 下显示的仅为推荐的起始稀释度;实际最佳的稀释度/浓度应由使用者检定。

应用	Ab评论	说明
WB		

应用说明

Dot: Use at an assay dependent dilution.

WB: Use at an assay dependent dilution. Detects a band of approximately 32 kDa for the recombinant protein fragment (predicted molecular weight: 101 kDa for the full length protein).

Not yet tested in other applications.

Optimal dilutions/concentrations should be determined by the end user.

靶标

功能

The NAA10-NAA15 complex displays alpha (N-terminal) acetyltransferase activity that may be important for vascular, hematopoietic and neuronal growth and development. Required to control retinal neovascularization in adult ocular endothelial cells. In complex with XRCC6 and XRCC5 (Ku80), up-regulates transcription from the osteocalcin promoter.

组织特异性

Expressed at high levels in testis and in ocular endothelial cells. Also found in brain (corpus callosum), heart, colon, bone marrow and at lower levels in most adult tissues, including thyroid, liver, pancreas, mammary and salivary glands, lung, ovary, urogenital system and upper gastrointestinal tract. Overexpressed in gastric cancer, in papillary thyroid carcinomas and in a Burkitt lymphoma cell line (Daudi). Specifically suppressed in abnormal proliferating blood vessels in eyes of patients with proliferative diabetic retinopathy.

序列相似性

Contains 8 TPR repeats.

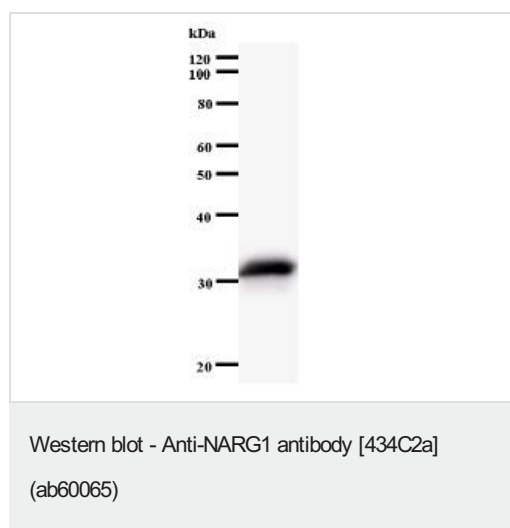
翻译后修饰

Cleaved by caspases during apoptosis, resulting in a stable 35 kDa fragment.

细胞定位

Cytoplasm. Nucleus. Mainly cytoplasmic, nuclear in some cases. Present in the free cytosolic and cytoskeleton-bound polysomes, but not in the membrane-bound polysomes.

图片



Western blot analysis of immunized recombinant protein, using
ab60065

Please note: All products are "FOR RESEARCH USE ONLY. NOT FOR USE IN DIAGNOSTIC PROCEDURES"

Our Abpromise to you: Quality guaranteed and expert technical support

- Replacement or refund for products not performing as stated on the datasheet
- Valid for 12 months from date of delivery
- Response to your inquiry within 24 hours
- We provide support in Chinese, English, French, German, Japanese and Spanish
- Extensive multi-media technical resources to help you
- We investigate all quality concerns to ensure our products perform to the highest standards

If the product does not perform as described on this datasheet, we will offer a refund or replacement. For full details of the Abpromise, please visit <https://www.abcam.cn/abpromise> or contact our technical team.

Terms and conditions

- Guarantee only valid for products bought direct from Abcam or one of our authorized distributors