

Anti-NALP5 antibody ab105324

2 图像

概述

产品名称	Anti-NALP5抗体
描述	兔多克隆抗体to NALP5
宿主	Rabbit
经测试应用	适用于: IHC-P, ICC/IF
种属反应性	与反应: Human
免疫原	A Synthetic peptide (14 amino acid) from near the C terminus of Human NALP5 (NP_703148).
常规说明	<p>The Life Science industry has been in the grips of a reproducibility crisis for a number of years. Abcam is leading the way in addressing this with our range of recombinant monoclonal antibodies and knockout edited cell lines for gold-standard validation. Please check that this product meets your needs before purchasing.</p> <p>If you have any questions, special requirements or concerns, please send us an inquiry and/or contact our Support team ahead of purchase. Recommended alternatives for this product can be found below, along with publications, customer reviews and Q&As</p>

性能

形式	Liquid
存放说明	Shipped at 4°C. Store at +4°C.
存储溶液	pH: 7.2 Preservative: 0.02% Sodium azide Constituent: PBS
纯度	Immunogen affinity purified
克隆	多克隆
同种型	IgG

应用

The Abpromise guarantee **Abpromise™**承诺保证使用ab105324于以下的经测试应用

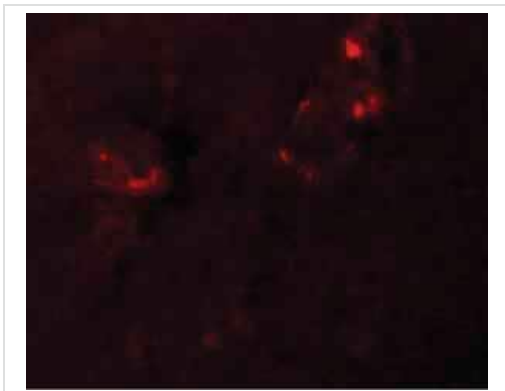
“应用说明”部分下显示的仅为推荐的起始稀释度;实际最佳的稀释度/浓度应由使用者检定。

应用	Ab评论	说明
IHC-P		Use at an assay dependent concentration.
ICC/IF		Use a concentration of 20 µg/ml.

靶标

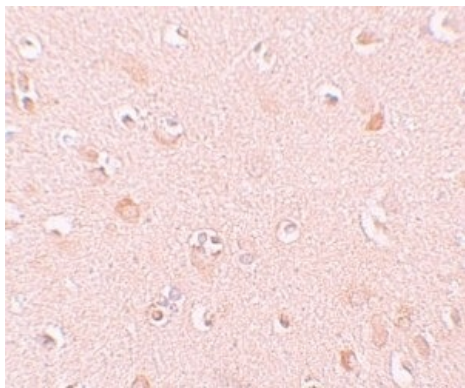
功能	As a member of the subcortical maternal complex (SCMC), plays an essential role for zygotes to progress beyond the first embryonic cell divisions.
组织特异性	Oocyte-specific.
序列相似性	Belongs to the NLRP family. Contains 13 LRR (leucine-rich) repeats. Contains 1 NACHT domain. Contains 1 pyrin domain.
细胞定位	Mitochondrion. Nucleus, nucleolus. Cytoplasm. In the subcortical cytoplasm of early embryos from the 1-cell to the blastocyst stages. From the 2-cell stage, still detected in the subcortex, but excluded from cell-cell contact regions (By similarity).

图片



Immunofluorescence of NALP5 in Human brain tissue with ab105324 at 20 ug/mL.

Immunocytochemistry/ Immunofluorescence - Anti-NALP5 antibody (ab105324)



Immunohistochemistry of Human brain tissue with ab105324 at 10 µg/mL.

Immunohistochemistry (Formalin/PFA-fixed paraffin-embedded sections) - Anti-NALP5 antibody (ab105324)

Please note: All products are "FOR RESEARCH USE ONLY. NOT FOR USE IN DIAGNOSTIC PROCEDURES"

Our Abpromise to you: Quality guaranteed and expert technical support

- Replacement or refund for products not performing as stated on the datasheet
- Valid for 12 months from date of delivery
- Response to your inquiry within 24 hours
- We provide support in Chinese, English, French, German, Japanese and Spanish
- Extensive multi-media technical resources to help you
- We investigate all quality concerns to ensure our products perform to the highest standards

If the product does not perform as described on this datasheet, we will offer a refund or replacement. For full details of the Abpromise, please visit <https://www.abcam.cn/abpromise> or contact our technical team.

Terms and conditions

- Guarantee only valid for products bought direct from Abcam or one of our authorized distributors