

Anti-NAF1 antibody ab122323

1 图像

概述

产品名称	Anti-NAF1抗体
描述	兔多克隆抗体to NAF1
宿主	Rabbit
经测试应用	适用于: IHC-P
种属反应性	与反应: Human
免疫原	antigen: EIFGPVAHPF YVLRFNSSDH IESKGIKIKE TMYFAPSMKD FTQYIFTEKL KQDKGSDASW KNDQEPPPEA LDFSDDEKEK EAKQRKKSQIQGRK, corresponding to amino acids 242-335 of Human NAF1 (Q96HR8). Run BLAST with Expasy Run BLAST with NCBI
阳性对照	IHC: Human esophagus tissue
常规说明	<p>The Life Science industry has been in the grips of a reproducibility crisis for a number of years. Abcam is leading the way in addressing this with our range of recombinant monoclonal antibodies and knockout edited cell lines for gold-standard validation. Please check that this product meets your needs before purchasing.</p> <p>If you have any questions, special requirements or concerns, please send us an inquiry and/or contact our Support team ahead of purchase. Recommended alternatives for this product can be found below, along with publications, customer reviews and Q&As</p>

性能

形式	Liquid
存放说明	Shipped at 4°C. Store at +4°C short term (1-2 weeks). Store at -20°C long term.
存储溶液	pH: 7.20 Preservative: 0.02% Sodium azide Constituents: 59% PBS, 40% Glycerol (glycerin, glycerine)
纯度	Immunogen affinity purified
克隆	多克隆
同种型	IgG

应用

The Abpromise guarantee

Abpromise™ 承诺保证使用 ab122323 于以下的经测试应用

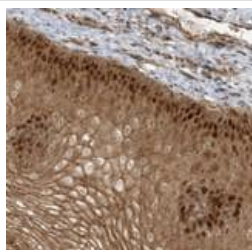
“应用说明”部分下显示的仅为推荐的起始稀释度；实际最佳的稀释度/浓度应由使用者检定。

应用	Ab评论	说明
IHC-P		1/50 - 1/200. Perform heat mediated antigen retrieval with citrate buffer pH 6 before commencing with IHC staining protocol.

靶标

功能	RNA-binding protein required for the maturation of box H/ACA snoRNPs complex and ribosome biogenesis. During assembly of the H/ACA snoRNPs complex, it associates with the complex and disappears during maturation of the complex and is replaced by NOLA1/GAR1 to yield mature H/ACA snoRNPs complex. Probably competes with NOLA1/GAR1 for binding with DKC1/NOLA4.
序列相似性	Belongs to the NAF1 family.
细胞定位	Cytoplasm. Nucleus. Shuttles between the cytoplasm and the nucleus. Absent from the nucleolus.

图片



Immunohistochemical staining (Formalin/PFA-fixed paraffin-embedded sections) of human esophagus with ab122323 at 1/100 dilution showing strong nuclear and cytoplasmic positivity in squamous epithelial cells

Immunohistochemistry (Formalin/PFA-fixed paraffin-embedded sections) - Anti-NAF1 antibody (ab122323)

Please note: All products are "FOR RESEARCH USE ONLY. NOT FOR USE IN DIAGNOSTIC PROCEDURES"

Our Abpromise to you: Quality guaranteed and expert technical support

- Replacement or refund for products not performing as stated on the datasheet
- Valid for 12 months from date of delivery
- Response to your inquiry within 24 hours
- We provide support in Chinese, English, French, German, Japanese and Spanish
- Extensive multi-media technical resources to help you
- We investigate all quality concerns to ensure our products perform to the highest standards

If the product does not perform as described on this datasheet, we will offer a refund or replacement. For full details of the Abpromise,

please visit <https://www.abcam.cn/abpromise> or contact our technical team.

Terms and conditions

- Guarantee only valid for products bought direct from Abcam or one of our authorized distributors