


Anti-Nab2 antibody ab112056

2 图像

概述

产品名称	Anti-Nab2抗体
描述	兔多克隆抗体to Nab2
宿主	Rabbit
经测试应用	适用于: WB, IP
种属反应性	与反应: Human 预测可用于: Mouse, Rat, Rabbit, Horse, Guinea pig, Dog, Pig, Chimpanzee, Rhesus monkey, Gorilla, Orangutan 
免疫原	Synthetic peptide, corresponding to a region within amino acids 475-525 of Human Nab2 (NP_005958.1)
阳性对照	Whole cell lysate from 293T and Jurkat cells.
常规说明	<p>The Life Science industry has been in the grips of a reproducibility crisis for a number of years. Abcam is leading the way in addressing this with our range of recombinant monoclonal antibodies and knockout edited cell lines for gold-standard validation. Please check that this product meets your needs before purchasing.</p> <p>If you have any questions, special requirements or concerns, please send us an inquiry and/or contact our Support team ahead of purchase. Recommended alternatives for this product can be found below, along with publications, customer reviews and Q&As</p>

性能

形式	Liquid
存放说明	Shipped at 4°C. Upon delivery aliquot and store at -20°C. Avoid freeze / thaw cycles.
存储溶液	<p>pH: 7</p> <p>Preservative: 0.09% Sodium azide</p> <p>Constituent: 99% Tris citrate/phosphate</p> <p>pH 7 to 8.</p>
纯度	Immunogen affinity purified
克隆	多克隆
同种型	IgG

应用

The Abpromise guarantee **Abpromise™**承诺保证使用ab112056于以下的经测试应用

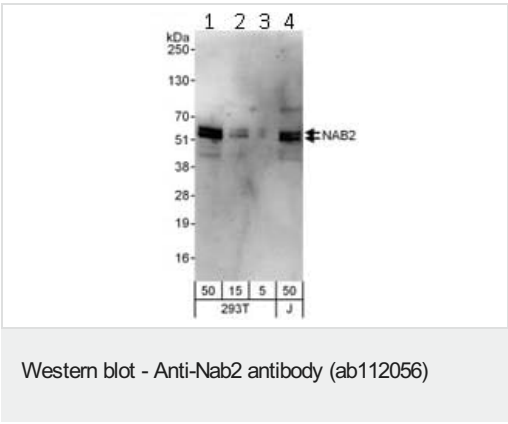
“应用说明”部分 下显示的仅为推荐的起始稀释度;实际最佳的稀释度/浓度应由使用者检定。

应用	Ab评论	说明
WB		1/2000 - 1/10000. Predicted molecular weight: 57 kDa.
IP		Use at 2-10 µg/mg of lysate.

靶标

功能	Acts as a transcriptional repressor for zinc finger transcription factors EGR1 and EGR2. Isoform 2 lacks repression ability.
组织特异性	Widely expressed at low levels. Highly expressed in melanoma cell lines.
序列相似性	Belongs to the NAB family.
结构域	The NAB conserved domain 1 (NCD1) interacts with EGR1 inhibitory domain and mediates multimerization. The NAB conserved domain 2 (NCD2) is necessary for transcriptional repression.
细胞定位	Nucleus. Isoform 2 is not localized to the nucleus.

图片



Western blot - Anti-Nab2 antibody (ab112056)

All lanes : Anti-Nab2 antibody (ab112056) at 0.1 µg/ml

Lane 1 : HeLa whole cell lysate at 50 µg/ml

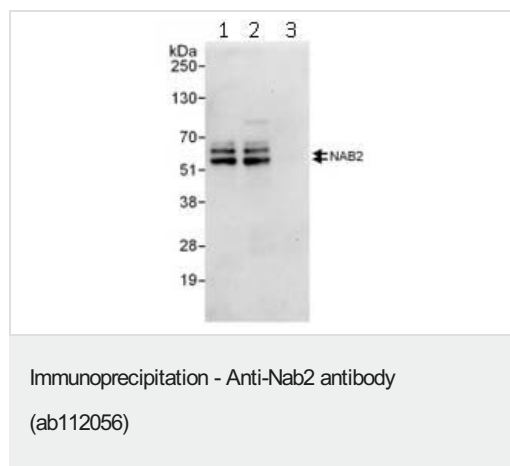
Lane 2 : HeLa whole cell lysate at 15 µg/ml

Lane 3 : HeLa whole cell lysate at 5 µg/ml

Lane 4 : Jurkat whole cell lysate at 50 µg/ml

Predicted band size: 57 kDa

Exposure time: 3 minutes



Immunoprecipitation of NAB2. Samples: 1 mg of whole cell lysate from 293T cells. NAB2 was detected with anti-NAB2 antibody NAB2 antibody (ab112056) at 1 µg/ml. Lane 1- NAB2 was also immunoprecipitated by rabbit anti-NAB2 antibody NAB2 antibody (ab112056) at 6 µg/mg lysate. Lane 2- NAB2 was immunoprecipitated by an rabbit anti-NAB2 antibody that recognizes an upstream epitope. Lane 3- Rabbit IgG control.

Detection: Chemiluminescence with exposure time of 10 seconds.

Please note: All products are "FOR RESEARCH USE ONLY. NOT FOR USE IN DIAGNOSTIC PROCEDURES"

Our Abpromise to you: Quality guaranteed and expert technical support

- Replacement or refund for products not performing as stated on the datasheet
- Valid for 12 months from date of delivery
- Response to your inquiry within 24 hours
- We provide support in Chinese, English, French, German, Japanese and Spanish
- Extensive multi-media technical resources to help you
- We investigate all quality concerns to ensure our products perform to the highest standards

If the product does not perform as described on this datasheet, we will offer a refund or replacement. For full details of the Abpromise, please visit <https://www.abcam.cn/abpromise> or contact our technical team.

Terms and conditions

- Guarantee only valid for products bought direct from Abcam or one of our authorized distributors