

Anti-Myotilin antibody ab68915

★★★★★ [2 Abreviews](#) [3 References](#) [2 图像](#)

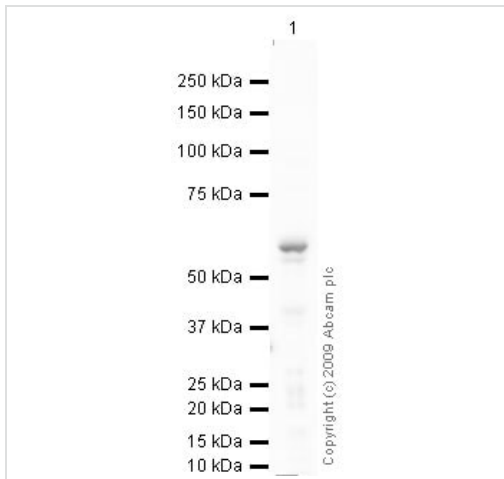
概述

产品名称	Anti-Myotilin抗体
描述	兔多克隆抗体to Myotilin
宿主	Rabbit
经测试应用	适用于: IHC-P, WB
种属反应性	与反应: Rat 预测可用于: Mouse, Cow, Human 
免疫原	Synthetic peptide conjugated to KLH derived from within residues 1 - 100 of Human Myotilin.参阅 Abcam的专有抗源政策 (Peptide available as ab74353 .)
阳性对照	This antibody gave a positive signal in Rat Skeletal Muscle Tissue Lysate.
常规说明	<p>The Life Science industry has been in the grips of a reproducibility crisis for a number of years. Abcam is leading the way in addressing this with our range of recombinant monoclonal antibodies and knockout edited cell lines for gold-standard validation. Please check that this product meets your needs before purchasing.</p> <p>If you have any questions, special requirements or concerns, please send us an inquiry and/or contact our Support team ahead of purchase. Recommended alternatives for this product can be found below, along with publications, customer reviews and Q&As</p>

性能

形式	Liquid
存放说明	Shipped at 4°C. Store at +4°C short term (1-2 weeks). Upon delivery aliquot. Store at -20°C or -80°C. Avoid freeze / thaw cycle.
存储溶液	pH: 7.40 Preservative: 0.02% Sodium azide Constituent: PBS Batches of this product that have a concentration < 1mg/ml may have BSA added as a stabilising agent. If you would like information about the formulation of a specific lot, please contact our scientific support team who will be happy to help.
纯度	Immunogen affinity purified
克隆	多克隆

同种型	IgG	
应用		
The Abpromise guarantee Abpromise™ 承诺保证使用ab68915于以下的经测试应用		
“应用说明”部分 下显示的仅为推荐的起始稀释度;实际最佳的稀释度/浓度应由使用者检定。		
应用	Ab评论	说明
IHC-P		Use a concentration of 5 µg/ml. Perform heat mediated antigen retrieval before commencing with IHC staining protocol.
WB	★★★★★ (1)	Use a concentration of 1 µg/ml. Detects a band of approximately 56 kDa (predicted molecular weight: 56 kDa).
靶标		
功能	Component of a complex of multiple actin cross-linking proteins. Involved in the control of myofibril assembly and stability at the Z lines in muscle cells.	
组织特异性	Expressed in skeletal muscle (at protein level). Expressed in skeletal muscle, heart, bone marrow and thyroid gland.	
疾病相关	<p>Defects in MYOT are the cause of limb-girdle muscular dystrophy type 1A (LGMD1A) [MIM:159000]. LGMD1A is an autosomal dominant degenerative myopathy with onset within a mean age of 28 years. LGMD1A is characterized by progressive skeletal muscle weakness of the hip and shoulder girdles, later progressing to include distal weakness, as well as a distinctive dysarthric pattern of speech. Affected muscle exhibits disorganization and streaming of the Z-line.</p> <p>Defects in MYOT are the cause of myopathy myofibrillar myotilin-related (MFM-MYOT) [MIM:609200]. A neuromuscular disorder characterized by progressive skeletal muscle weakness greater distally than proximally, tight heel cords, hyporeflexia, cardiomyopathy and peripheral neuropathy in some patients. Affected muscle exhibits disorganization and streaming of the Z-line, presence of large hyaline structures, excessive accumulation of myotilin and other ectopically expressed proteins and prominent congophilic deposits.</p> <p>Defects in MYOT are the cause of spheroid body myopathy (SBM) [MIM:182920]. SBM is an autosomal dominant form of myofibrillar myopathy (MFM), characterized by slowly progressing proximal muscle weakness and dysarthric nasal speech. There is no evidence of cardiomyopathy. Muscle biopsy shows spheroid bodies within the type I muscle fibers.</p>	
序列相似性	<p>Belongs to the myotilin/palladin family.</p> <p>Contains 2 Ig-like C2-type (immunoglobulin-like) domains.</p>	
细胞定位	Cell membrane > sarcolemma. Cytoplasm > cytoskeleton. Cytoplasm > myofibril > sarcomere > Z line. Sarcomeric, also localized to the sarcolemma. Colocalizes with MYOZ1 at the Z-lines in skeletal muscle.	
图片		



Western blot - Anti-Myotilin antibody (ab68915)

Anti-Myotilin antibody (ab68915) at 1 µg/ml + Skeletal Muscle (Rat)
Tissue Lysate at 10 µg

Secondary

Goat polyclonal to Rabbit IgG - H&L - Pre-Adsorbed (HRP) at
1/3000 dilution

Performed under reducing conditions.

Predicted band size: 56 kDa

Observed band size: 56 kDa

Exposure time: 2 minutes



Immunohistochemistry (Formalin/PFA-fixed paraffin-
embedded sections) - Anti-Myotilin antibody
(ab68915)

IHC image of ab68915 staining in rat skeletal muscle formalin fixed paraffin embedded tissue section, performed on a Leica Bond™ system using the standard protocol F. The section was pre-treated using heat mediated antigen retrieval with sodium citrate buffer (pH6, epitope retrieval solution 1) for 20 mins. The section was then incubated with ab68915, 5µg/ml, for 15 mins at room temperature and detected using an HRP conjugated compact polymer system. DAB was used as the chromogen. The section was then counterstained with haematoxylin and mounted with DPX.

For other IHC staining systems (automated and non-automated) customers should optimize variable parameters such as antigen retrieval conditions, primary antibody concentration and antibody incubation times.

Please note: All products are "FOR RESEARCH USE ONLY. NOT FOR USE IN DIAGNOSTIC PROCEDURES"

Our Abpromise to you: Quality guaranteed and expert technical support

- Replacement or refund for products not performing as stated on the datasheet
- Valid for 12 months from date of delivery
- Response to your inquiry within 24 hours
- We provide support in Chinese, English, French, German, Japanese and Spanish
- Extensive multi-media technical resources to help you
- We investigate all quality concerns to ensure our products perform to the highest standards

If the product does not perform as described on this datasheet, we will offer a refund or replacement. For full details of the Abpromise, please visit <https://www.abcam.cn/abpromise> or contact our technical team.

Terms and conditions

- Guarantee only valid for products bought direct from Abcam or one of our authorized distributors