

Anti-Myosin Phosphatase antibody ab59235

9 References [2 图像](#)

概述

产品名称	Anti-Myosin Phosphatase抗体
描述	兔多克隆抗体to Myosin Phosphatase
宿主	Rabbit
经测试应用	适用于: IHC-P, WB
种属反应性	与反应: Mouse, Human
免疫原	Synthetic non-phosphopeptide derived from human Myosin Phosphatase around the phosphorylation site of threonine 853 (R-S-T ^P -G-V).
常规说明	<p>The Life Science industry has been in the grips of a reproducibility crisis for a number of years. Abcam is leading the way in addressing this with our range of recombinant monoclonal antibodies and knockout edited cell lines for gold-standard validation. Please check that this product meets your needs before purchasing.</p> <p>If you have any questions, special requirements or concerns, please send us an inquiry and/or contact our Support team ahead of purchase. Recommended alternatives for this product can be found below, along with publications, customer reviews and Q&As</p>

性能

形式	Liquid
存放说明	Shipped at 4°C. Store at -20°C. Stable for 12 months at -20°C.
存储溶液	<p>pH: 7.40</p> <p>Preservative: 0.02% Sodium azide</p> <p>Constituents: PBS, 50% Glycerol (glycerin, glycerine), 0.87% Sodium chloride</p>
纯度	Without Mg+2 and Ca+2
克隆	Immunogen affinity purified
同种型	多克隆
	IgG

应用

The Abpromise guarantee

Abpromise™承诺保证使用ab59235于以下的经测试应用

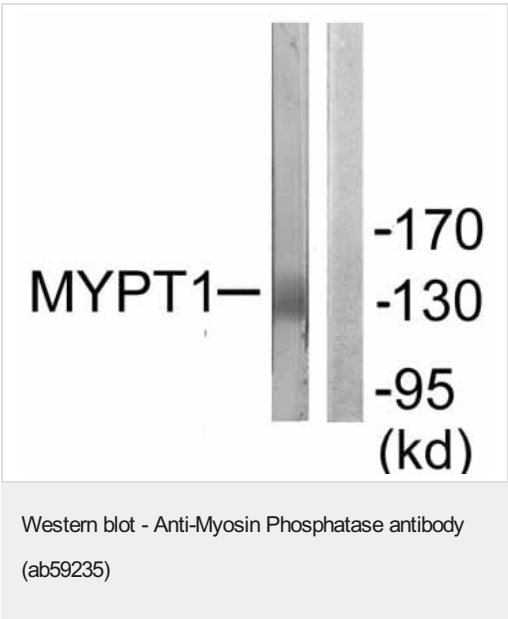
“应用说明”部分 下显示的仅为推荐的起始稀释度;实际最佳的稀释度/浓度应由使用者检定。

应用	Ab评论	说明
IHC-P		Use at an assay dependent concentration.
WB		1/500 - 1/1000. Detects a band of approximately 130 kDa (predicted molecular weight: 115 kDa).

靶标

功能	Regulates myosin phosphatase activity.
组织特异性	Expressed in striated muscles, specifically in type 2a fibers (at protein level).
序列相似性	Contains 6 ANK repeats.
发展阶段	Induced by 2-fold during pregnancy, including in abdominus rectus muscle.
结构域	Heterotetramerization is mediated by the interaction between a coiled-coil of PRKG1 and the leucine/isoleucine zipper of PPP1R12A/MBS, the myosin-binding subunit of the myosin phosphatase.
翻译后修饰	Phosphorylated by CIT (Rho-associated kinase) (By similarity). Phosphorylated cooperatively by ROCK1 and CDC42BP on Thr-696. Phosphorylated on upon DNA damage, probably by ATM or ATR. In vitro, phosphorylation of Ser-695 by PKA and PKG appears to prevent phosphorylation of the inhibitory site Thr-696, probably mediated by PRKG1.
细胞定位	Cytoplasm. Along actomyosin filaments and stress fibers.

图片



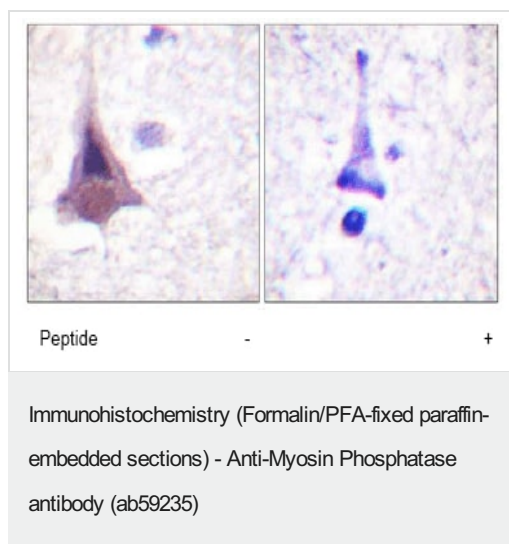
All lanes : Anti-Myosin Phosphatase antibody (ab59235) at 1/500 dilution

Lane 1 : NIH3T3 cell extract

Lane 2 : NIH3T3 cell extract with immunising peptide

Predicted band size: 115 kDa

Observed band size: 130 kDa



ab59235 at 1/50 dilution staining Myosin Phosphatase in human brain by Immunohistochemistry, Paraffin embedded tissue, in the absence or presence of the immunising peptide.

Please note: All products are "FOR RESEARCH USE ONLY. NOT FOR USE IN DIAGNOSTIC PROCEDURES"

Our Abpromise to you: Quality guaranteed and expert technical support

- Replacement or refund for products not performing as stated on the datasheet
- Valid for 12 months from date of delivery
- Response to your inquiry within 24 hours
- We provide support in Chinese, English, French, German, Japanese and Spanish
- Extensive multi-media technical resources to help you
- We investigate all quality concerns to ensure our products perform to the highest standards

If the product does not perform as described on this datasheet, we will offer a refund or replacement. For full details of the Abpromise, please visit <https://www.abcam.cn/abpromise> or contact our technical team.

Terms and conditions

- Guarantee only valid for products bought direct from Abcam or one of our authorized distributors