

Anti-Myosin Light Chain 2 antibody [EPR3741] ab92721

重组 RabMAb

★★★★★ 5 Abreviews 32 References 8 图像

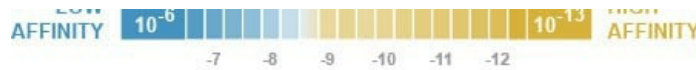
概述

产品名称	Anti-Myosin Light Chain 2抗体[EPR3741]
描述	兔单克隆抗体[EPR3741] to Myosin Light Chain 2
宿主	Rabbit
经测试应用	适用于: WB, IHC-P 不适用于: Flow Cyt
种属反应性	与反应: Mouse, Rat, Human
免疫原	Synthetic peptide. This information is proprietary to Abcam and/or its suppliers.
阳性对照	WB: human heart, human skeletal muscle, mouse heart, rat heart lysates IHC: human cardiac muscle, mouse cardiac muscle, rat cardiac muscle
常规说明	<p>We are constantly working hard to ensure we provide our customers with best in class antibodies. As a result of this work we are pleased to now offer this antibody in purified format. We are in the process of updating our datasheets. The purified format is designated 'PUR' on our product labels. If you have any questions regarding this update, please contact our Scientific Support team.</p> <p>This product is a recombinant monoclonal antibody, which offers several advantages including:</p> <ul style="list-style-type: none">- High batch-to-batch consistency and reproducibility- Improved sensitivity and specificity- Long-term security of supply- Animal-free production <p>For more information see here.</p> <p>Our RabMAb[®] technology is a patented hybridoma-based technology for making rabbit monoclonal antibodies. For details on our patents, please refer to RabMAb[®] patents.</p>

性能

形式	Liquid
存放说明	Shipped at 4°C. Store at -20°C. Stable for 12 months at -20°C.
解离常数 (K _D)	K _D = 2.78 x 10 ⁻¹⁰ M





[Learn more about K_D](#)

存储溶液	pH: 7.20 Preservative: 0.01% Sodium azide Constituents: 59% PBS, 40% Glycerol (glycerin, glycerine), 0.05% BSA
纯度	Protein A purified
克隆	单克隆
克隆编号	EPR3741
同种型	IgG

应用

The Abpromise guarantee **Abpromise™** 承诺保证使用 ab92721 于以下的经测试应用

“应用说明”部分 下显示的仅为推荐的起始稀释度; 实际最佳的稀释度/浓度应由使用者检定。

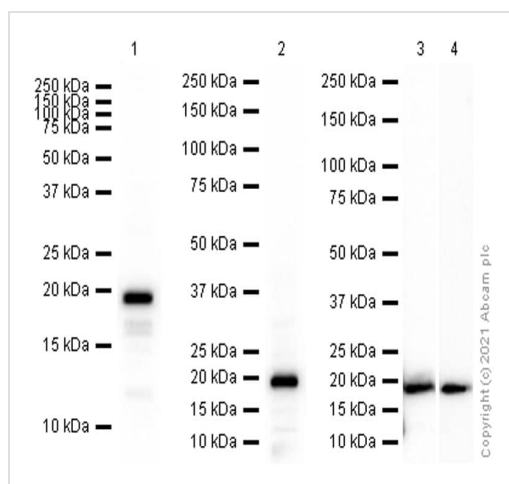
应用	Ab 评论	说明
WB	★★★★☆ (4)	1/10000. Predicted molecular weight: 19 kDa.
IHC-P		1/600. Perform heat mediated antigen retrieval before commencing with IHC staining protocol. The use of an HRP/AP polymerized secondary antibody is recommended.

应用说明 Is unsuitable for Flow Cyt.

靶标

疾病相关	Defects in MYL2 are the cause of cardiomyopathy familial hypertrophic type 10 (CMH10) [MIM:608758]. Familial hypertrophic cardiomyopathy is a hereditary heart disorder characterized by ventricular hypertrophy, which is usually asymmetric and often involves the interventricular septum. The symptoms include dyspnea, syncope, collapse, palpitations, and chest pain. They can be readily provoked by exercise. The disorder has inter- and intrafamilial variability ranging from benign to malignant forms with high risk of cardiac failure and sudden cardiac death. Defects in MYL2 are the cause of cardiomyopathy familial hypertrophic with mid-left ventricular chamber type 2 (MVC2) [MIM:608758]. MVC2 is a very rare variant of familial hypertrophic cardiomyopathy, characterized by mid-left ventricular chamber thickening.
序列相似性	Contains 3 EF-hand domains.
翻译后修饰	N-terminus is methylated by METTL11A/NTM1.

图片



Western blot - Anti-Myosin Light Chain 2 antibody [EPR3741] (ab92721)

All lanes : Anti-Myosin Light Chain 2 antibody [EPR3741] (ab92721) at 1/10000 dilution (Purified)

Lane 1 : Human heart lysate

Lane 2 : Human skeletal muscle lysate

Lane 3 : Mouse heart lysate

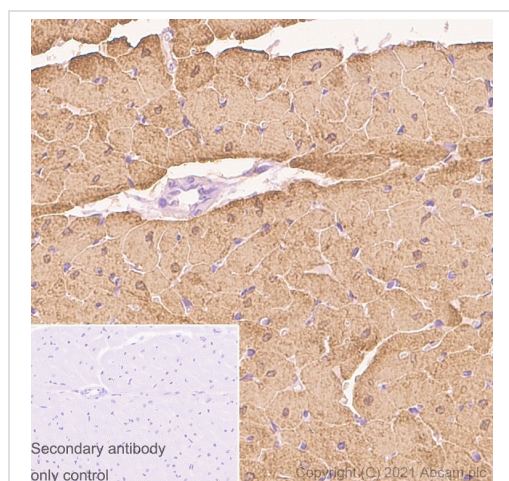
Lane 4 : Rat heart lysate

Secondary

All lanes : Goat Anti-Rabbit IgG (HRP) with minimal cross-reactivity with human IgG at 1/2000 dilution

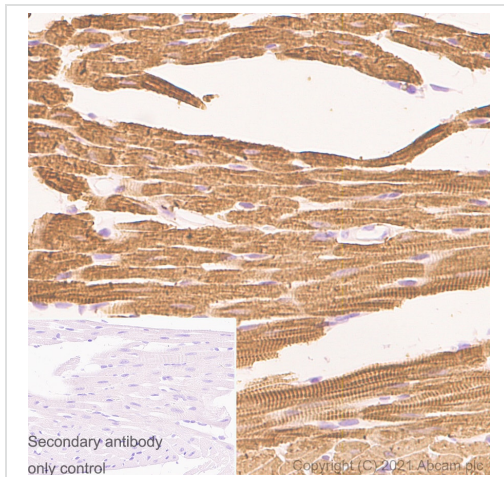
Predicted band size: 19 kDa

Observed band size: 19 kDa



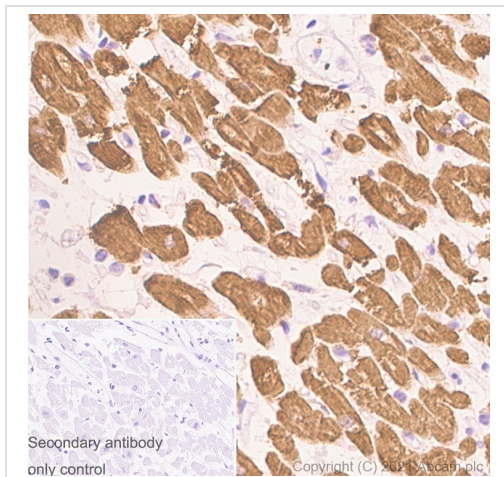
Immunohistochemistry (Formalin/PFA-fixed paraffin-embedded sections) - Anti-Myosin Light Chain 2 antibody [EPR3741] (ab92721)

Immunohistochemistry (Formalin/PFA-fixed paraffin-embedded sections) analysis of rat cardiac muscle tissue sections labeling Myosin Light Chain 2 with Purified ab92721 at 1/600 dilution (0.16 µg/mL). Heat mediated antigen retrieval was performed using Heat mediated antigen retrieval using Bond™ Epitope Retrieval Solution 2 (pH 9.0) . Tissue was counterstained with Hematoxylin. Rabbit specific IHC polymer detection kit HRP/DAB ([ab209101](#)) secondary antibody was used at 1/0 dilution. PBS instead of the primary antibody was used as the negative control. M3



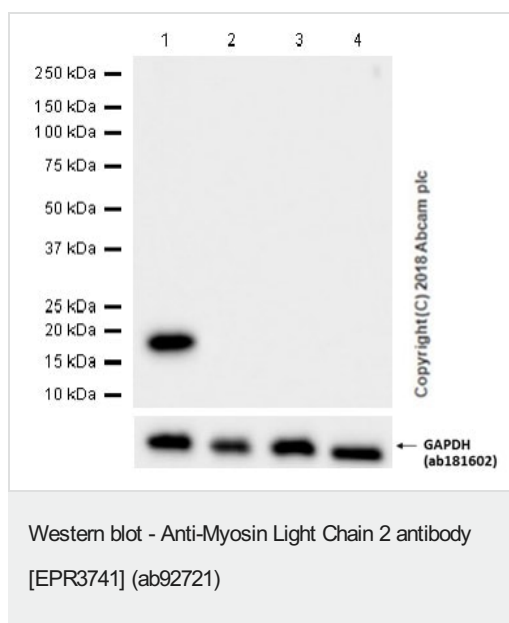
Immunohistochemistry (Formalin/PFA-fixed paraffin-embedded sections) - Anti-Myosin Light Chain 2 antibody [EPR3741] (ab92721)

Immunohistochemistry (Formalin/PFA-fixed paraffin-embedded sections) analysis of mouse cardiac muscle tissue sections labeling Myosin Light Chain 2 with Purified ab92721 at 1/600 dilution (0.16 µg/mL). Heat mediated antigen retrieval was performed using Heat mediated antigen retrieval using Bond™ Epitope Retrieval Solution 2 (pH 9.0) . Tissue was counterstained with Hematoxylin. Rabbit specific IHC polymer detection kit HRP/DAB (**ab209101**) secondary antibody was used at 1/0 dilution. PBS instead of the primary antibody was used as the negative control. M3



Immunohistochemistry (Formalin/PFA-fixed paraffin-embedded sections) - Anti-Myosin Light Chain 2 antibody [EPR3741] (ab92721)

Immunohistochemistry (Formalin/PFA-fixed paraffin-embedded sections) analysis of human cardiac muscle tissue sections labeling Myosin Light Chain 2 with Purified ab92721 at 1/600 dilution (0.16 µg/mL). Heat mediated antigen retrieval was performed using Heat mediated antigen retrieval using Bond™ Epitope Retrieval Solution 2 (pH 9.0) . Tissue was counterstained with Hematoxylin. Rabbit specific IHC polymer detection kit HRP/DAB (**ab209101**) secondary antibody was used at 1/0 dilution. PBS instead of the primary antibody was used as the negative control. M3



All lanes : Anti-Myosin Light Chain 2 antibody [EPR3741] (ab92721) at 1/1000 dilution

Lane 1 : Human fetal heart tissue lysate

Lane 2 : HeLa (Human cervix adenocarcinoma epithelial cell) whole cell lysate

Lane 3 : 293T (Human embryonic kidney epithelial cell), whole cell lysate

Lane 4 : MCF7 (Human breast adenocarcinoma epithelial cell) whole cell lysate

Lysates/proteins at 20 µg per lane.

Secondary

All lanes : Goat Anti-Rabbit IgG H&L (HRP) (**ab97051**) at 1/20000 dilution

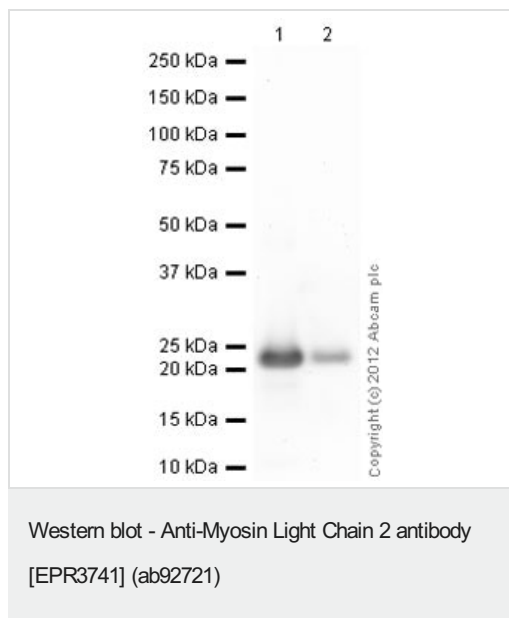
Predicted band size: 19 kDa

Observed band size: 19 kDa

Exposure time: 10 seconds

Blocking/Diluting buffer and concentration 5% NFDm/TBST

Myosin light chain-2 (MYL2, also called MLC-2) is an ~19kDa sarcomeric protein that belongs to the EF-hand calcium binding protein superfamily and exists as three major isoforms encoded by three distinct genes in mammalian striated muscle (PMID: 26074085). Although some cell lines are reported to be MYL2 positive, such as HeLa, 293T and MCF7 (PMID: 21487036, 21487036, 23093227), ab92721 only works in muscle and heart tissues according to our internal testing.



All lanes : Anti-Myosin Light Chain 2 antibody [EPR3741] (ab92721) at 1/10000 dilution

Lane 1 : Recombinant Human Myosin Light Chain 2 protein ([ab79185](#)) at 0.1 µg

Lane 2 : Recombinant Human Myosin Light Chain 2 protein ([ab79185](#)) at 0.01 µg

Secondary

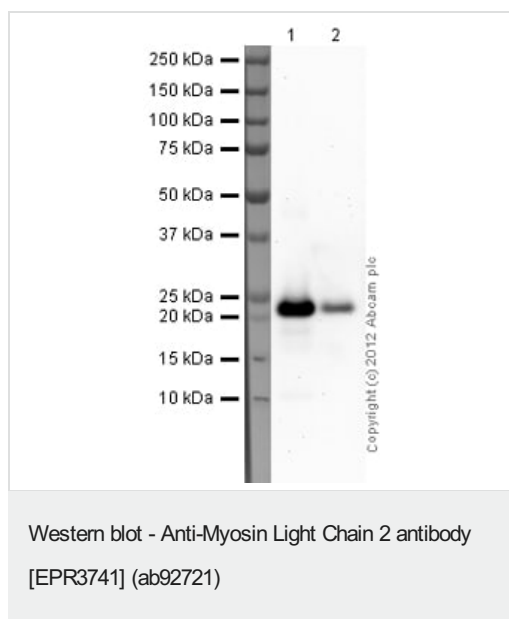
All lanes : Goat Anti-Rabbit IgG H&L (HRP) preadsorbed ([ab97080](#)) at 1/5000 dilution

Developed using the ECL technique.

Performed under reducing conditions.

Predicted band size: 19 kDa

Exposure time: 4 minutes



All lanes : Anti-Myosin Light Chain 2 antibody [EPR3741] (ab92721) at 1/10000 dilution

Lane 1 : Recombinant Human Myosin Light Chain 2 protein ([ab79185](#)) at 0.1 µg

Lane 2 : Recombinant Human Myosin Light Chain 2 protein ([ab79185](#)) at 0.01 µg

Secondary

All lanes : Goat Anti-Rabbit IgG H&L (HRP) preadsorbed ([ab97080](#)) at 1/5000 dilution





Developed using the ECL technique.

Performed under reducing conditions.

Predicted band size: 19 kDa

Exposure time: 8 minutes

Why choose a recombinant antibody?

 <p>Research with confidence Consistent and reproducible results</p>	 <p>Long-term and scalable supply Recombinant technology</p>
 <p>Success from the first experiment Confirmed specificity</p>	 <p>Ethical standards compliant Animal-free production</p>

Anti-Myosin Light Chain 2 antibody [EPR3741]
(ab92721)

Please note: All products are "FOR RESEARCH USE ONLY. NOT FOR USE IN DIAGNOSTIC PROCEDURES"

Our Abpromise to you: Quality guaranteed and expert technical support

- Replacement or refund for products not performing as stated on the datasheet
- Valid for 12 months from date of delivery
- Response to your inquiry within 24 hours
- We provide support in Chinese, English, French, German, Japanese and Spanish
- Extensive multi-media technical resources to help you
- We investigate all quality concerns to ensure our products perform to the highest standards

If the product does not perform as described on this datasheet, we will offer a refund or replacement. For full details of the Abpromise, please visit <https://www.abcam.cn/abpromise> or contact our technical team.

Terms and conditions

- Guarantee only valid for products bought direct from Abcam or one of our authorized distributors