


Anti-Myosin Light Chain 2 antibody ab79935

★★★★★ [2 Abreviews](#) [27 References](#) [3 图像](#)

概述

产品名称	Anti-Myosin Light Chain 2抗体
描述	兔多克隆抗体to Myosin Light Chain 2
宿主	Rabbit
经测试应用	适用于: WB, IHC-P, IP
种属反应性	与反应: Mouse, Rat, Human 预测可用于: Sheep, Cow, Dog, Pig 
免疫原	Synthetic peptide corresponding to Human Myosin Light Chain 2 aa 100 to the C-terminus (C terminal) conjugated to keyhole limpet haemocyanin. (Peptide available as ab88166)
常规说明	<p>The Life Science industry has been in the grips of a reproducibility crisis for a number of years. Abcam is leading the way in addressing this with our range of recombinant monoclonal antibodies and knockout edited cell lines for gold-standard validation. Please check that this product meets your needs before purchasing.</p> <p>If you have any questions, special requirements or concerns, please send us an inquiry and/or contact our Support team ahead of purchase. Recommended alternatives for this product can be found below, along with publications, customer reviews and Q&As</p>

性能

形式	Liquid
存放说明	Shipped at 4°C. Store at +4°C short term (1-2 weeks). Upon delivery aliquot. Store at -20°C or -80°C. Avoid freeze / thaw cycle.
存储溶液	<p>pH: 7.40</p> <p>Preservative: 0.02% Sodium azide</p> <p>Constituent: PBS</p> <p>Batches of this product that have a concentration < 1mg/ml may have BSA added as a stabilising agent. If you would like information about the formulation of a specific lot, please contact our scientific support team who will be happy to help.</p>
纯度	Immunogen affinity purified
克隆	多克隆

同种型

IgG

应用

The Abpromise guarantee

Abpromise™承诺保证使用ab79935于以下的经测试应用

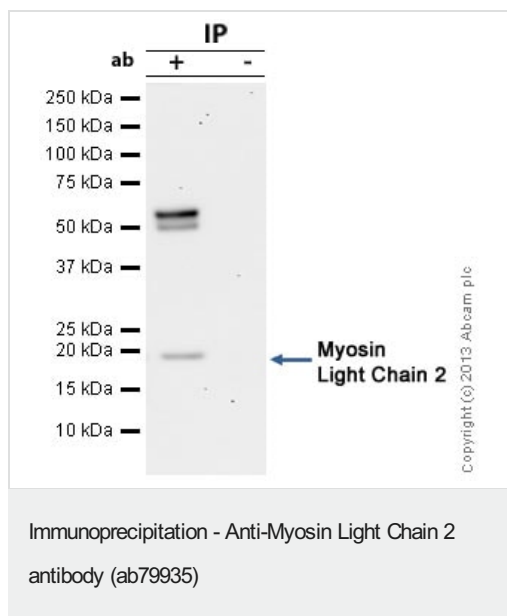
“应用说明”部分 下显示的仅为推荐的起始稀释度;实际最佳的稀释度/浓度应由使用者检定。

应用	Ab评论	说明
WB	★★★★★ (1)	Use a concentration of 1 µg/ml. Detects a band of approximately 19 kDa (predicted molecular weight: 19 kDa).
IHC-P		Use a concentration of 5 µg/ml.
IP		Use a concentration of 5 µg/ml.

靶标

疾病相关	Defects in MYL2 are the cause of cardiomyopathy familial hypertrophic type 10 (CMH10) [MIM:608758]. Familial hypertrophic cardiomyopathy is a hereditary heart disorder characterized by ventricular hypertrophy, which is usually asymmetric and often involves the interventricular septum. The symptoms include dyspnea, syncope, collapse, palpitations, and chest pain. They can be readily provoked by exercise. The disorder has inter- and intrafamilial variability ranging from benign to malignant forms with high risk of cardiac failure and sudden cardiac death. Defects in MYL2 are the cause of cardiomyopathy familial hypertrophic with mid-left ventricular chamber type 2 (MVC2) [MIM:608758]. MVC2 is a very rare variant of familial hypertrophic cardiomyopathy, characterized by mid-left ventricular chamber thickening.
序列相似性	Contains 3 EF-hand domains.
翻译后修饰	N-terminus is methylated by METTL11A/NTM1.

图片



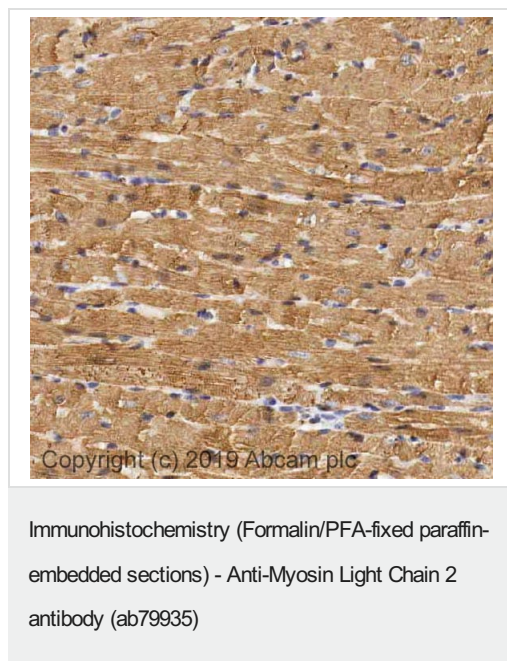
Myosin Light Chain 2 was immunoprecipitated using 0.5mg Mouse Heart tissue, 5µg of Rabbit polyclonal to Myosin Light Chain 2 and 50µl of protein G magnetic beads (+). No antibody was added to the control (-).

The antibody was incubated under agitation with Protein G beads for 10min, Mouse Heart tissue lysate diluted in RIPA buffer was added to each sample and incubated for a further 10min under agitation.

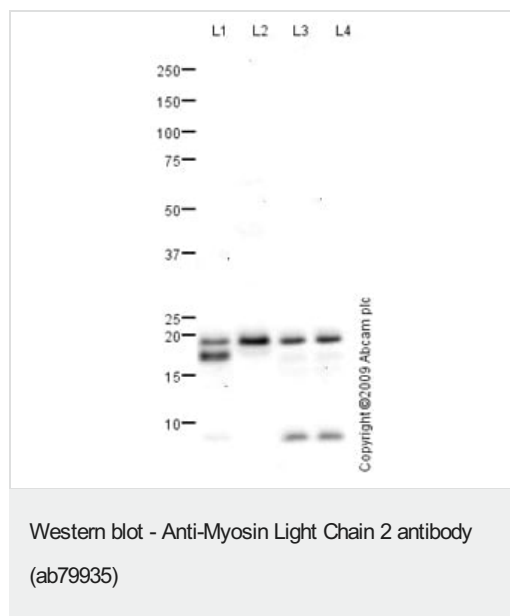
Proteins were eluted by addition of 40µl SDS loading buffer and incubated for 10min at 70°C; 10µl of each sample was separated on a SDS PAGE gel, transferred to a nitrocellulose membrane, blocked with 5% BSA and probed with ab79935.

Secondary: Mouse monoclonal [SB62a] Secondary Antibody to Rabbit IgG light chain (HRP) ([ab99697](#)).

Band: 19kDa; Myosin Light Chain 2



IHC image of Myosin light chain 2 antibody staining in a section of formalin-fixed paraffin-embedded normal mouse heart performed on a Leica BOND™ system using the standard protocol. The section was pre-treated using heat mediated antigen retrieval with sodium citrate buffer (pH6, epitope retrieval solution 1) for 20mins. The section was then incubated with ab79935, 1ug/ml, for 15 mins at room temperature and detected using an HRP conjugated compact polymer system. DAB was used as the chromogen. The section was then counterstained with haematoxylin and mounted with DPX.



All lanes : Anti-Myosin Light Chain 2 antibody (ab79935) at 1 µg/ml

Lane 1 : Human heart tissue lysate - total protein (**ab29431**)

Lane 2 : Human skeletal muscle tissue lysate - total protein (**ab29330**)

Lane 3 : Heart (Mouse) Tissue Lysate

Lane 4 : Heart (Rat) Tissue Lysate

Lysates/proteins at 10 µg per lane.

Secondary

All lanes : Goat polyclonal to Rabbit IgG - H&L - Pre-Adsorbed (HRP) at 1/3000 dilution

Developed using the ECL technique.

Performed under reducing conditions.

Predicted band size: 19 kDa

Observed band size: 19 kDa

Additional bands at: 17 kDa, 8 kDa. We are unsure as to the identity of these extra bands.

Exposure time: 15 minutes

Please note: All products are "FOR RESEARCH USE ONLY. NOT FOR USE IN DIAGNOSTIC PROCEDURES"

Our Abpromise to you: Quality guaranteed and expert technical support

- Replacement or refund for products not performing as stated on the datasheet
- Valid for 12 months from date of delivery
- Response to your inquiry within 24 hours
- We provide support in Chinese, English, French, German, Japanese and Spanish
- Extensive multi-media technical resources to help you
- We investigate all quality concerns to ensure our products perform to the highest standards

If the product does not perform as described on this datasheet, we will offer a refund or replacement. For full details of the Abpromise, please visit <https://www.abcam.cn/abpromise> or contact our technical team.

Terms and conditions

- Guarantee only valid for products bought direct from Abcam or one of our authorized distributors