

# Anti-Myoglobin antibody ab231725

★★★★★ [1 Abreviews](#) [5 图像](#)

### 概述

<b>产品名称</b>	Anti-Myoglobin抗体
<b>描述</b>	兔多克隆抗体to Myoglobin
<b>宿主</b>	Rabbit
<b>经测试应用</b>	<b>适用于:</b> WB
<b>种属反应性</b>	<b>与反应:</b> Goat, Recombinant fragment <b>预测可用于:</b> Sheep, Cow 
<b>免疫原</b>	Recombinant full length protein corresponding to Sheep Myoglobin aa 1 to the C-terminus. Database link: <a href="#">P02190</a> <a href="#">Run BLAST with</a> <a href="#">Run BLAST with</a>
<b>阳性对照</b>	WB: Recombinant sheep Myoglobin protein; goat skeletal muscle, cerebrum, heart and liver lysates.
<b>常规说明</b>	<p>The Life Science industry has been in the grips of a reproducibility crisis for a number of years. Abcam is leading the way in addressing this with our range of recombinant monoclonal antibodies and knockout edited cell lines for gold-standard validation. Please check that this product meets your needs before purchasing.</p> <p>If you have any questions, special requirements or concerns, please send us an inquiry and/or contact our Support team ahead of purchase. Recommended alternatives for this product can be found below, along with publications, customer reviews and Q&amp;As</p>

### 性能

<b>形式</b>	Liquid
<b>存放说明</b>	Shipped at 4°C. Store at +4°C short term (1-2 weeks). Upon delivery aliquot. Store at -20°C long term. Avoid freeze / thaw cycle.
<b>存储溶液</b>	pH: 7.40 Preservative: 0.011% Proclin 300 Constituents: 55.77% Glycerol (glycerin, glycerine), 44.219% PBS
<b>纯度</b>	Immunogen affinity purified
<b>纯化说明</b>	Antigen-specific affinity chromatography followed by Protein A affinity chromatography.
<b>克隆</b>	多克隆

同种型

IgG

## 应用

The Abpromise guarantee

**Abpromise™** 承诺保证使用 ab231725 于以下的经测试应用

“应用说明”部分 下显示的仅为推荐的起始稀释度;实际最佳的稀释度/浓度应由使用者检定。

应用	Ab评论	说明
WB	★★★★★ (1)	1/50 - 1/400. Predicted molecular weight: 17 kDa.

## 靶标

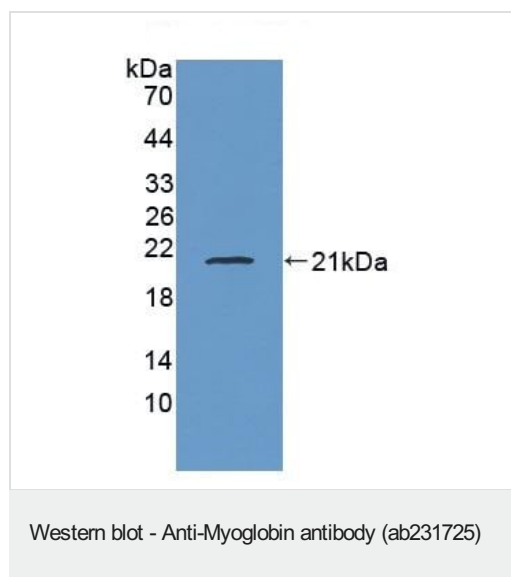
功能

Serves as a reserve supply of oxygen and facilitates the movement of oxygen within muscles.

序列相似性

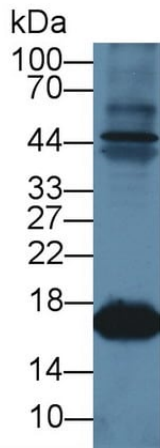
Belongs to the globin family.

## 图片



Anti-Myoglobin antibody (ab231725) at 1/50 dilution + Recombinant shepp Myoglobin protein

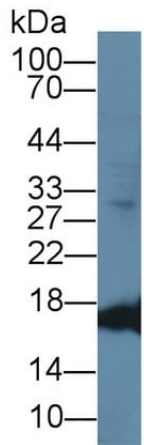
**Predicted band size: 17 kDa**



Western blot - Anti-Myoglobin antibody (ab231725)

Anti-Myoglobin antibody (ab231725) at 1/50 dilution + Goat skeletal muscle lysate

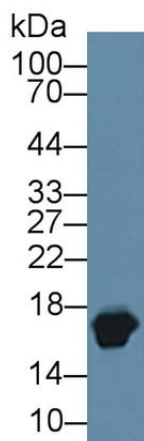
**Predicted band size: 17 kDa**



Western blot - Anti-Myoglobin antibody (ab231725)

Anti-Myoglobin antibody (ab231725) at 1/50 dilution + Goat cerebrum lysate

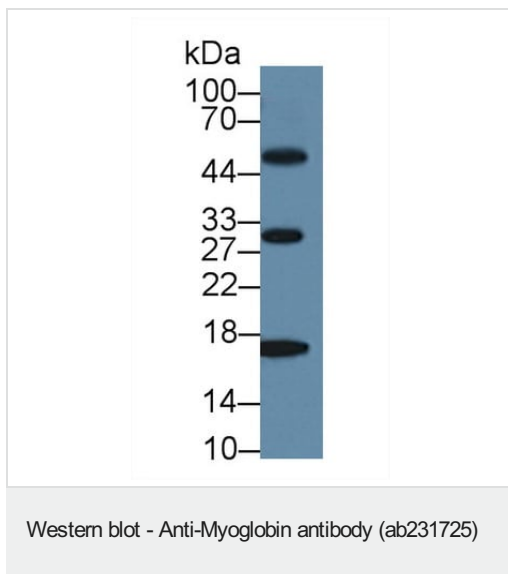
**Predicted band size: 17 kDa**



Western blot - Anti-Myoglobin antibody (ab231725)

Anti-Myoglobin antibody (ab231725) at 1/50 dilution + Goat heart lysate

**Predicted band size: 17 kDa**



Anti-Myoglobin antibody (ab231725) at 1/50 dilution + Goat liver lysate

**Predicted band size:** 17 kDa

**Please note:** All products are "FOR RESEARCH USE ONLY. NOT FOR USE IN DIAGNOSTIC PROCEDURES"

### Our Abpromise to you: Quality guaranteed and expert technical support

---

- Replacement or refund for products not performing as stated on the datasheet
- Valid for 12 months from date of delivery
- Response to your inquiry within 24 hours
- We provide support in Chinese, English, French, German, Japanese and Spanish
- Extensive multi-media technical resources to help you
- We investigate all quality concerns to ensure our products perform to the highest standards

If the product does not perform as described on this datasheet, we will offer a refund or replacement. For full details of the Abpromise, please visit <https://www.abcam.cn/abpromise> or contact our technical team.

### Terms and conditions

---

- Guarantee only valid for products bought direct from Abcam or one of our authorized distributors