




Anti-MyoD1 antibody [5.2F] ab16148

★★★★★ [17 Abreviews](#) [51 References](#) [2 图像](#)

概述

产品名称	Anti-MyoD1抗体[5.2F]
描述	小鼠单克隆抗体[5.2F] to MyoD1
宿主	Mouse
特异性	This antibody does not cross react with Myogenin, Myf5, or Myf6.
经测试应用	适用于: Sandwich ELISA, IHC-P
种属反应性	与反应: Mouse, Human 预测可用于: Chicken, Pig 
免疫原	Synthetic peptide corresponding to Mouse MyoD1 aa 3-56 (N terminal). Sequence: LLSPPLRDIDLTGPDGSLCSFETADDFYDDPCFDSPDLRFFE DLDPRLVH VGAL Database link: P10085 <div>  Run BLAST with  Run BLAST with </div>
阳性对照	WB: Mouse muscle tissue lysate. ICC/IF: Rat differentiated skeletal muscle cells. IHC-P: Human rhabdomyosarcoma.
常规说明	<p>The Life Science industry has been in the grips of a reproducibility crisis for a number of years. Abcam is leading the way in addressing this with our range of recombinant monoclonal antibodies and knockout edited cell lines for gold-standard validation. Please check that this product meets your needs before purchasing.</p> <p>If you have any questions, special requirements or concerns, please send us an inquiry and/or contact our Support team ahead of purchase. Recommended alternatives for this product can be found below, along with publications, customer reviews and Q&As</p>

性能

形式	Liquid
存放说明	Shipped at 4°C. Store at +4°C short term (1-2 weeks). Upon delivery aliquot. Store at -20°C. Avoid freeze / thaw cycle.
存储溶液	Preservative: 0.08% Sodium azide Constituent: PBS

纯度	Immunogen affinity purified
克隆	单克隆
克隆编号	5.2F
骨髓瘤	Sp2/0-Ag14
同种型	IgG2a

应用

The Abpromise guarantee **Abpromise™**承诺保证使用ab16148于以下的经测试应用

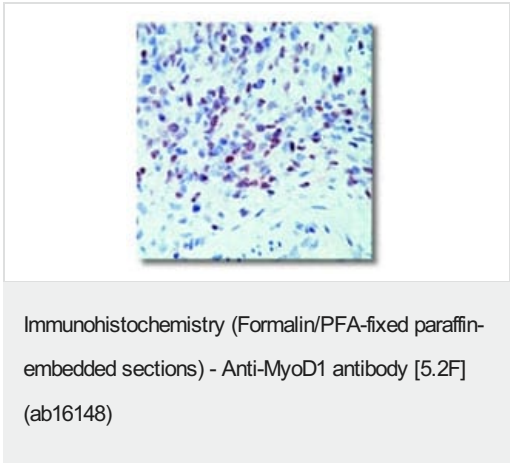
“应用说明”部分 下显示的仅为推荐的起始稀释度;实际最佳的稀释度/浓度应由使用者检定。

应用	Ab评论	说明
Sandwich ELISA		Use a concentration of 5 µg/ml. Can be paired for Sandwich ELISA with Rabbit polyclonal to MyoD1 (ab64159) . For sandwich ELISA, use this antibody as Capture at 5 µg/ml with Rabbit polyclonal to MyoD1 (ab64159) as Detection.
IHC-P	★★★★★ (6)	Use a concentration of 2 - 4 µg/ml.

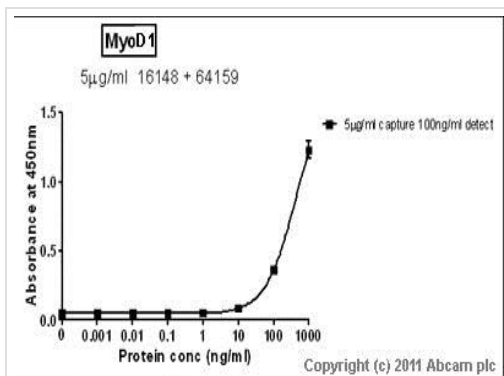
靶标

功能	Involved in muscle differentiation (myogenic factor). Induces fibroblasts to differentiate into myoblasts. Activates muscle-specific promoters. Interacts with and is inhibited by the twist protein. This interaction probably involves the basic domains of both proteins.
序列相似性	Contains 1 basic helix-loop-helix (bHLH) domain.
翻译后修饰	Acetylated by a complex containing EP300 and PCAF. The acetylation is essential to activate target genes. Conversely, its deacetylation by SIRT1 inhibits its function. Ubiquitinated on the N-terminus; which is required for proteasomal degradation.
细胞定位	Nucleus.

图片



Immunohistochemical staining using ab16148 at 2ug/ml on formalin fixed, paraffin embedded samples of human rhabdomyosarcoma.



Standard Curve for Myo-D; dilution range 1 pg/ml to 1 ug/ml using Capture Antibody **Mouse monoclonal [5.2F] to MyoD1 (ab16148)** at 5ug/ml and Detector Antibody **Rabbit polyclonal to MyoD1 (ab64159)** at 0.1ug/ml.

Sandwich ELISA - Anti-MyoD1 antibody [5.2F]
(ab16148)

Please note: All products are "FOR RESEARCH USE ONLY. NOT FOR USE IN DIAGNOSTIC PROCEDURES"

Our Abpromise to you: Quality guaranteed and expert technical support

- Replacement or refund for products not performing as stated on the datasheet
- Valid for 12 months from date of delivery
- Response to your inquiry within 24 hours
- We provide support in Chinese, English, French, German, Japanese and Spanish
- Extensive multi-media technical resources to help you
- We investigate all quality concerns to ensure our products perform to the highest standards

If the product does not perform as described on this datasheet, we will offer a refund or replacement. For full details of the Abpromise, please visit <https://www.abcam.cn/abpromise> or contact our technical team.

Terms and conditions

- Guarantee only valid for products bought direct from Abcam or one of our authorized distributors