


### Anti-MYO18A antibody ab81690

#### 1 图像

#### 概述

产品名称	Anti-MYO18A抗体
描述	兔多克隆抗体to MYO18A
宿主	Rabbit
经测试应用	适用于: IP
种属反应性	与反应: Human 预测可用于: Rat, Gorilla, Orangutan 
免疫原	Synthetic peptide within Human MYO18A aa 2000 to the C-terminus. The exact immunogen sequence used to generate this antibody is proprietary information. If additional detail on the immunogen is needed to determine the suitability of the antibody for your needs, please <b><u>contact</u></b> our Scientific Support team to discuss your requirements. NP_510880.2 Database link: <b><u>Q92614</u></b>
阳性对照	RIPA whole lysates from HeLa cells.
常规说明	<p>The Life Science industry has been in the grips of a reproducibility crisis for a number of years. Abcam is leading the way in addressing this with our range of recombinant monoclonal antibodies and knockout edited cell lines for gold-standard validation. Please check that this product meets your needs before purchasing.</p> <p>If you have any questions, special requirements or concerns, please send us an inquiry and/or contact our Support team ahead of purchase. Recommended alternatives for this product can be found below, along with publications, customer reviews and Q&amp;As</p>

#### 性能

形式	Liquid
存放说明	Shipped at 4°C. Upon delivery aliquot and store at -20°C. Avoid freeze / thaw cycles.
存储溶液	pH: 7 Preservative: 0.09% Sodium azide Constituents: 1.815% Tris, 1.764% Sodium citrate, 0.021% PBS
纯度	Immunogen affinity purified
纯化说明	ab81690 was affinity purified using an epitope specific to MYO18A immobilized on solid support.
克隆	多克隆

应用

The Abpromise guarantee      **Abpromise™**承诺保证使用ab81690于以下的经测试应用

“应用说明”部分 下显示的仅为推荐的起始稀释度;实际最佳的稀释度/浓度应由使用者检定。

应用	Ab评论	说明
IP		

应用说明

IP: Use at 2-5 µg/mg of lysate.

Is unsuitable for WB.

Not yet tested in other applications.

Optimal dilutions/concentrations should be determined by the end user.

靶标

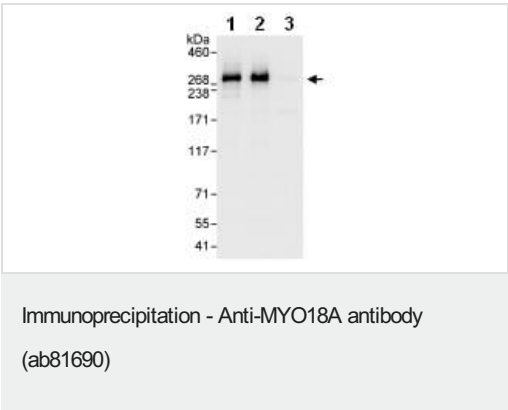
相关性

Myo18A/Myosin XVIIIa is an unconventional myosin that contains a lysine and glutamine (KE) rich domain and a PDZ domain. The KE and PDZ domains appear to direct subcellular localization of the Myo18A variants. It is a dimeric actin binding protein that may play a role in the stabilization and organization of the actin cytoskeleton. Recently a cell surface form of Myo18A has been identified as the receptor for surfactant protein A, a lipid associated lung collectin that mediates innate and adaptive immune responses in the lungs.

细胞定位

Isoform 1: Endoplasmic reticulum Golgi intermediate compartment. Cytoplasm, cytoskeleton.  
Note: Colocalizes with actin. Isoform 2: Cytoplasm. Note: Lacks the PDZ domain. Diffusely localized in the cytoplasm.

图片



Detection of human MYO18A by Western Blot of Immunoprecipitates.

Samples: RIPA whole cell lysate (1 mg for IP, 20% of IP loaded) from HeLa cells.

ab81690 used for IP at 3 µg/mg lysate (lane 2).

MYO18A was also immunoprecipitated by rabbit anti MYO18A (**ab81689**), which recognizes an upstream epitope (lane 1).

Lane 3 represents the control IgG.

For blotting immunoprecipitates, **ab81689** was used at 1 µg/ml.

Detection: by Chemiluminescence with an exposure time of 1 second.

Please note: All products are "FOR RESEARCH USE ONLY. NOT FOR USE IN DIAGNOSTIC PROCEDURES"

### **Our Abpromise to you: Quality guaranteed and expert technical support**

---

- Replacement or refund for products not performing as stated on the datasheet
- Valid for 12 months from date of delivery
- Response to your inquiry within 24 hours
  
- We provide support in Chinese, English, French, German, Japanese and Spanish
- Extensive multi-media technical resources to help you
- We investigate all quality concerns to ensure our products perform to the highest standards

If the product does not perform as described on this datasheet, we will offer a refund or replacement. For full details of the Abpromise, please visit <https://www.abcam.cn/abpromise> or contact our technical team.

### **Terms and conditions**

---

- Guarantee only valid for products bought direct from Abcam or one of our authorized distributors