

Anti-Muscarinic Acetylcholine Receptor M5/CHRM5 antibody ab186830

2 图像

概述

产品名称	Anti-Muscarinic Acetylcholine Receptor M5/CHRM5抗体
描述	兔多克隆抗体to Muscarinic Acetylcholine Receptor M5/CHRM5
宿主	Rabbit
经测试应用	适用于: ICC/IF, WB
种属反应性	与反应: Mouse, Human
免疫原	Recombinant fragment corresponding to Human Muscarinic Acetylcholine Receptor M5/CHRM5 aa 230-430 (internal sequence). Database link: P08912
常规说明	<p>The Life Science industry has been in the grips of a reproducibility crisis for a number of years. Abcam is leading the way in addressing this with our range of recombinant monoclonal antibodies and knockout edited cell lines for gold-standard validation. Please check that this product meets your needs before purchasing.</p> <p>If you have any questions, special requirements or concerns, please send us an inquiry and/or contact our Support team ahead of purchase. Recommended alternatives for this product can be found below, along with publications, customer reviews and Q&As</p>

性能

形式	Liquid
存放说明	Shipped at 4°C. Store at +4°C short term (1-2 weeks). Upon delivery aliquot. Store at -20°C long term. Avoid freeze / thaw cycle.
存储溶液	pH: 7.30 Preservative: 0.02% Sodium azide Constituents: 49% PBS, 50% Glycerol
纯度	Immunogen affinity purified
克隆	多克隆
同种型	IgG

应用

The Abpromise guarantee

Abpromise™ 承诺保证使用ab186830于以下的经测试应用

“应用说明”部分下显示的仅为推荐的起始稀释度;实际最佳的稀释度/浓度应由使用者检定。

应用	Ab评论	说明
ICC/IF		Use at an assay dependent concentration.
WB		1/500 - 1/2000. Predicted molecular weight: 60 kDa.

靶标

功能

The muscarinic acetylcholine receptor mediates various cellular responses, including inhibition of adenylate cyclase, breakdown of phosphoinositides and modulation of potassium channels through the action of G proteins. Primary transducing effect is Pi turnover.

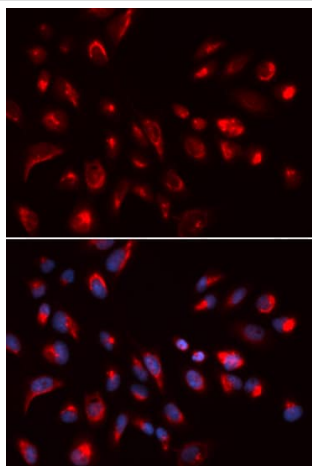
序列相似性

Belongs to the G-protein coupled receptor 1 family. Muscarinic acetylcholine receptor subfamily. CHRM5 sub-subfamily.

细胞定位

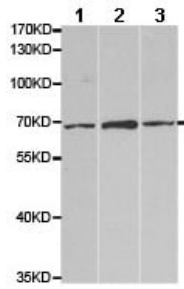
Cell membrane. Cell junction, synapse, postsynaptic cell membrane.

图片



Immunocytochemistry/Immunofluorescence analysis of U2OS cells using ab186830. Blue DAPI for nuclear staining.

Immunocytochemistry/ Immunofluorescence - Anti-Muscarinic Acetylcholine Receptor M5/CHRM5 antibody (ab186830)



Western blot - Anti-Muscarinic Acetylcholine Receptor M5/CHRM5 antibody (ab186830)

All lanes : Anti-Muscarinic Acetylcholine Receptor M5/CHRM5 antibody (ab186830) at 1/500 dilution

Lane 1 : BT474 cell extract

Lane 2 : U251 cell extract

Lane 3 : Mouse liver extract

Predicted band size: 60 kDa

Please note: All products are "FOR RESEARCH USE ONLY. NOT FOR USE IN DIAGNOSTIC PROCEDURES"

Our Abpromise to you: Quality guaranteed and expert technical support

- Replacement or refund for products not performing as stated on the datasheet
- Valid for 12 months from date of delivery
- Response to your inquiry within 24 hours
- We provide support in Chinese, English, French, German, Japanese and Spanish
- Extensive multi-media technical resources to help you
- We investigate all quality concerns to ensure our products perform to the highest standards

If the product does not perform as described on this datasheet, we will offer a refund or replacement. For full details of the Abpromise, please visit <https://www.abcam.cn/abpromise> or contact our technical team.

Terms and conditions

- Guarantee only valid for products bought direct from Abcam or one of our authorized distributors