

Anti-Muscarinic Acetylcholine Receptor 2/CM2 antibody [31-1D1] ab2805

★★★★★ [7 Abreviews](#) [13 References](#) [3 图像](#)

概述

产品名称	Anti-Muscarinic Acetylcholine Receptor 2/CM2抗体[31-1D1]
描述	小鼠单克隆抗体[31-1D1] to Muscarinic Acetylcholine Receptor 2/CM2
宿主	Mouse
特异性	This antibody is specific for the m2 mAChR subtype.
经测试应用	适用于: WB, ICC/IF, IHC-P
种属反应性	与反应: Mouse, Rat, Human 不与反应: Chicken
免疫原	Full length native protein (purified) corresponding to Pig Muscarinic Acetylcholine Receptor 2/CM2. Purified from Pig Heart.
阳性对照	WB: Human brain and spinal cord tissue lysate. Mouse brain tissue lysate. IHC-P: Human kidney tissue. ICC/IF: PC12 cells.
常规说明	<p>The Life Science industry has been in the grips of a reproducibility crisis for a number of years. Abcam is leading the way in addressing this with our range of recombinant monoclonal antibodies and knockout edited cell lines for gold-standard validation. Please check that this product meets your needs before purchasing.</p> <p>If you have any questions, special requirements or concerns, please send us an inquiry and/or contact our Support team ahead of purchase. Recommended alternatives for this product can be found below, along with publications, customer reviews and Q&As</p>

性能

形式	Liquid
存放说明	Shipped at 4°C. Store at +4°C short term (1-2 weeks). Upon delivery aliquot. Store at -20°C or -80°C. Avoid freeze / thaw cycle.
存储溶液	Preservative: 0.05% Sodium azide Constituent: 0.1% BSA
纯度	Protein A purified
克隆	单克隆
克隆编号	31-1D1

应用

The Abpromise guarantee

Abpromise™承诺保证使用ab2805于以下的经测试应用

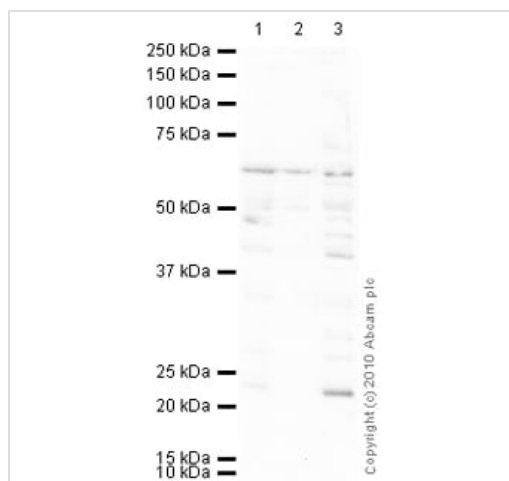
“应用说明”部分 下显示的仅为推荐的起始稀释度;实际最佳的稀释度/浓度应由使用者检定。

应用	Ab评论	说明
WB	★★★★☆ (5)	1/1000. Detects a band of approximately 64 kDa (predicted molecular weight: 52 kDa).
ICC/IF		Use at an assay dependent concentration.
IHC-P		1/20.

靶标

功能	The muscarinic acetylcholine receptor mediates various cellular responses, including inhibition of adenylate cyclase, breakdown of phosphoinositides and modulation of potassium channels through the action of G proteins. Primary transducing effect is adenylate cyclase inhibition.
疾病相关	Genetic variations in CHRM2 can influence susceptibility to major depressive disorder (MDD) [MIM:608516]. MDD is one of the most common psychiatric disorders. MDD is a complex trait characterized by one or more major depressive episodes without a history of manic, mixed, or hypomanic episodes. A major depressive episode is characterized by at least 2 weeks during which there is a new onset or clear worsening of either depressed mood or loss of interest or pleasure in nearly all activities. Four additional symptoms must also be present including changes in appetite, weight, sleep, and psychomotor activity; decreased energy; feelings of worthlessness or guilt; difficulty thinking, concentrating, or making decisions; or recurrent thoughts of death or suicidal ideation, plans, or attempts. The episode must be accompanied by distress or impairment in social, occupational, or other important areas of functioning.
序列相似性	Belongs to the G-protein coupled receptor 1 family. Muscarinic acetylcholine receptor subfamily. CHRM2 sub-subfamily.
细胞定位	Cell membrane. Cell junction > synapse > postsynaptic cell membrane.

图片



Western blot - Anti-Muscarinic Acetylcholine Receptor 2/CM2 antibody [31-1D1] (ab2805)

All lanes : Anti-Muscarinic Acetylcholine Receptor 2/CM2 antibody [31-1D1] (ab2805) at 1 µg/ml

Lane 1 : Human brain tissue lysate - total protein ([ab29466](#))

Lane 2 : Human spinal cord tissue lysate - total protein ([ab29188](#))

Lane 3 : Brain (Mouse) Tissue Lysate

Lysates/proteins at 10 µg per lane.

Secondary

All lanes : Goat Anti-Mouse IgG H&L (HRP) preadsorbed ([ab97040](#)) at 1/5000 dilution

Developed using the ECL technique.

Performed under reducing conditions.

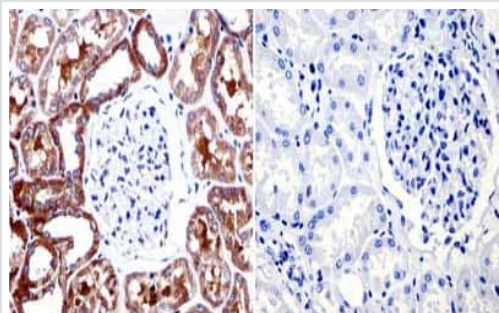
Predicted band size: 52 kDa

Observed band size: 64 kDa

Additional bands at: 22 kDa, 40 kDa. We are unsure as to the identity of these extra bands.

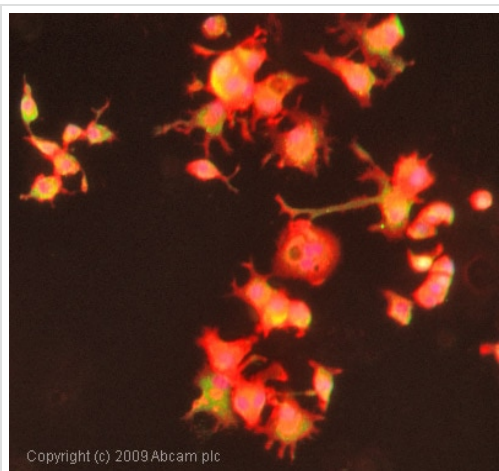
Exposure time: 30 seconds

Muscarinic Acetylcholine Receptor 2/CM2 contains a number of potential glycosylation sites (SwissProt) which may explain its migration at a higher molecular weight than predicted.



Immunohistochemistry (Formalin/PFA-fixed paraffin-embedded sections) - Anti-Muscarinic Acetylcholine Receptor 2/CM2 antibody [31-1D1] (ab2805)

Immunohistochemistry was performed on normal biopsies of deparaffinized human kidney tissue. To expose target proteins heat induced antigen retrieval was performed using 10mM sodium citrate (pH6.0) buffer and microwaved for 8-15 minutes. Following antigen retrieval tissues were blocked in 3% BSA-PBS for 30 minutes at room temperature. Tissues were then probed at a dilution of 1:20 with a Mouse monoclonal antibody recognizing Muscarinic Acetylcholine Receptor 2/CM2 (ab2805) or without primary antibody (negative control) overnight at 4°C in a humidified chamber. Tissues were washed extensively with PBST and endogenous peroxidase activity was quenched with a peroxidase suppressor. Detection was performed using a biotin-conjugated secondary antibody and SA-HRP followed by colorimetric detection using DAB. Tissues were counterstained with hematoxylin and prepped for mounting.



Immunocytochemistry/ Immunofluorescence - Anti-Muscarinic Acetylcholine Receptor 2/CM2 antibody [31-1D1] (ab2805)

ICC/IF image of ab2805 stained PC12 cells. The cells were 4% PFA fixed (10 min) and then incubated in 1%BSA / 10% normal goat serum / 0.3M glycine in 0.1% PBS-Tween for 1h to permeabilise the cells and block non-specific protein-protein interactions. The cells were then incubated with the antibody (ab2805, 5µg/ml) overnight at +4°C. The secondary antibody (green) was Alexa Fluor® 488 goat anti-mouse IgG (H+L) used at a 1/1000 dilution for 1h. Alexa Fluor® 594 WGA was used to label plasma membranes (red) at a 1/200 dilution for 1h. DAPI was used to stain the cell nuclei (blue) at a concentration of 1.43µM.

Please note: All products are "FOR RESEARCH USE ONLY. NOT FOR USE IN DIAGNOSTIC PROCEDURES"

Our Abpromise to you: Quality guaranteed and expert technical support

- Replacement or refund for products not performing as stated on the datasheet
- Valid for 12 months from date of delivery

- Response to your inquiry within 24 hours
- We provide support in Chinese, English, French, German, Japanese and Spanish
- Extensive multi-media technical resources to help you
- We investigate all quality concerns to ensure our products perform to the highest standards

If the product does not perform as described on this datasheet, we will offer a refund or replacement. For full details of the Abpromise, please visit <https://www.abcam.cn/abpromise> or contact our technical team.

Terms and conditions

- Guarantee only valid for products bought direct from Abcam or one of our authorized distributors