

Anti-MUPCDH antibody ab121306

[1 References](#) [2 图像](#)

概述

产品名称	Anti-MUPCDH抗体
描述	兔多克隆抗体to MUPCDH
宿主	Rabbit
经测试应用	适用于: WB, IHC-P
种属反应性	与反应: Human
免疫原	antigen, corresponding to amino acids 30-179 of Human MUPCDH.
阳性对照	IHC: Human kidney tissue WB; Human liver tissue
常规说明	<p>The Life Science industry has been in the grips of a reproducibility crisis for a number of years. Abcam is leading the way in addressing this with our range of recombinant monoclonal antibodies and knockout edited cell lines for gold-standard validation. Please check that this product meets your needs before purchasing.</p> <p>If you have any questions, special requirements or concerns, please send us an inquiry and/or contact our Support team ahead of purchase. Recommended alternatives for this product can be found below, along with publications, customer reviews and Q&As</p>

性能

形式	Liquid
存放说明	Shipped at 4°C. Upon delivery aliquot and store at -20°C. Avoid freeze / thaw cycles.
存储溶液	pH: 7.20 Preservative: 0.02% Sodium azide Constituents: 59% PBS, 40% Glycerol (glycerin, glycerine)
纯度	Immunogen affinity purified
克隆	多克隆
同种型	IgG

应用

The Abpromise guarantee **Abpromise™**承诺保证使用ab121306于以下的经测试应用

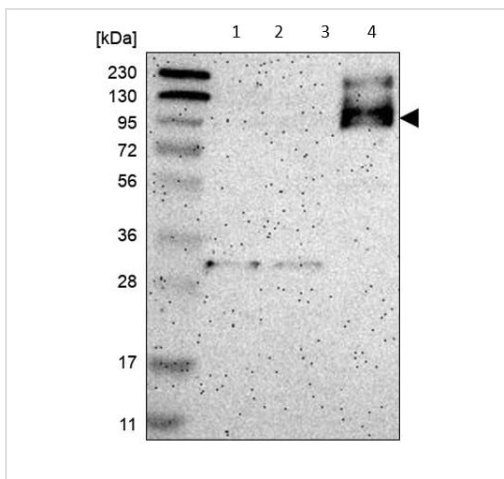
“应用说明”部分 下显示的仅为推荐的起始稀释度;实际最佳的稀释度/浓度应由使用者检定。

应用	Ab评论	说明
WB		Use a concentration of 0.04 - 0.4 mg/ml.
IHC-P		1/200 - 1/500. Perform heat mediated antigen retrieval with citrate buffer pH 6 before commencing with IHC staining protocol.

靶标

功能	Acts as a calcium-dependent cell adhesion protein.
组织特异性	Highest expression in kidney, liver, colon and small intestine. In kidney, expressed apically along brush border of proximal convoluted tubule but not in cortical collecting ducts. Isoform 1 is expressed primarily in adult small intestine and colon. Isoform 2 is highly expressed in fetal liver.
序列相似性	Contains 4 cadherin domains.
翻译后修饰	N- and O-glycosylated.
细胞定位	Cell membrane.

图片



Western blot - Anti-MUPCDH antibody (ab121306)

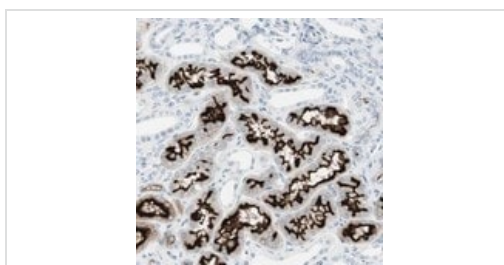
All lanes : Anti-MUPCDH antibody (ab121306) at 0.4 µg/ml

Lane 1 : Human cell line RT-4

Lane 2 : Human cell line U-251

Lane 3 : Human plasma

Lane 4 : Human liver tissue



ab121306 at 1/500 dilution staining MUPCDH in Paraffin-embedded Human kidney tissue by Immunohistochemistry.

Immunohistochemistry (Formalin/PFA-fixed paraffin-embedded sections) - Anti-MUPCDH antibody (ab121306)

Please note: All products are "FOR RESEARCH USE ONLY. NOT FOR USE IN DIAGNOSTIC PROCEDURES"

Our Abpromise to you: Quality guaranteed and expert technical support

- Replacement or refund for products not performing as stated on the datasheet
- Valid for 12 months from date of delivery
- Response to your inquiry within 24 hours

- We provide support in Chinese, English, French, German, Japanese and Spanish
- Extensive multi-media technical resources to help you
- We investigate all quality concerns to ensure our products perform to the highest standards

If the product does not perform as described on this datasheet, we will offer a refund or replacement. For full details of the Abpromise, please visit <https://www.abcam.cn/abpromise> or contact our technical team.

Terms and conditions

- Guarantee only valid for products bought direct from Abcam or one of our authorized distributors