

Anti-MTHFD2 antibody [4G7-2G3] ab56772

敲除验证

9 References 4 图像

概述	
产品名称	Anti-MTHFD2抗体[4G7-2G3]
描述	小鼠单克隆抗体[4G7-2G3] to MTHFD2
宿主	Mouse
经测试应用	适用于: WB, IHC-P, Flow Cyt
种属反应性	与反应: Human
免疫原	Recombinant full length protein, corresponding to amino acids 16-345 of Human MTHFD2
阳性对照	WB: HEK293T, HepG2 and HeLa cell lysates. IHC-P: Human lymphoma tissue. Flow Cyt: HepG2 cells.
常规说明	<p>This product was changed from ascites to tissue culture supernatant on 24/1/19. Please note that the dilutions may need to be adjusted accordingly. If you have any questions, please do not hesitate to contact our scientific support team.</p> <p>The Life Science industry has been in the grips of a reproducibility crisis for a number of years. Abcam is leading the way in addressing this with our range of recombinant monoclonal antibodies and knockout edited cell lines for gold-standard validation. Please check that this product meets your needs before purchasing.</p> <p>If you have any questions, special requirements or concerns, please send us an inquiry and/or contact our Support team ahead of purchase. Recommended alternatives for this product can be found below, along with publications, customer reviews and Q&As</p>
性能	
形式	Liquid
存放说明	Shipped at 4°C. Upon delivery aliquot and store at -20°C or -80°C. Avoid repeated freeze / thaw cycles.
存储溶液	pH: 7.4
纯度	Tissue culture supernatant
纯化说明	Purified from TCS.
克隆	单克隆
克隆编号	4G7-2G3

同种型 IgG2a
轻链类型 kappa

应用

The Abpromise guarantee Abpromise™承诺保证使用ab56772于以下的经测试应用

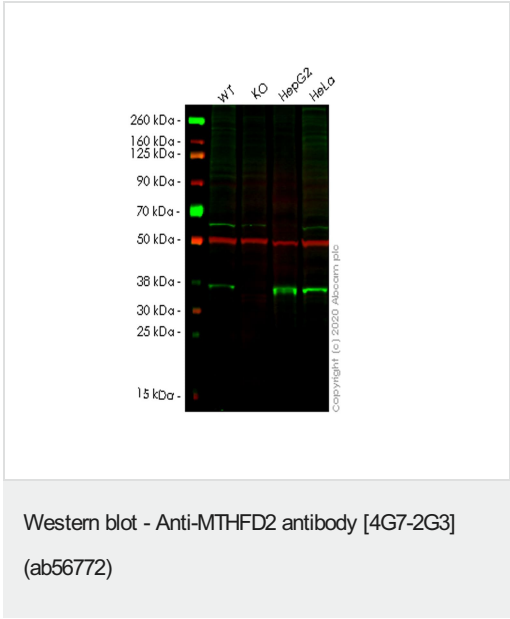
“应用说明”部分 下显示的仅为推荐的起始稀释度;实际最佳的稀释度/浓度应由使用者检定。

应用	Ab评论	说明
WB		Use at an assay dependent concentration. Predicted molecular weight: 37 kDa.
IHC-P		Use at an assay dependent concentration.
Flow Cyt		Use at an assay dependent concentration. <u>ab170191</u> - Mouse monoclonal IgG2a, is suitable for use as an isotype control with this antibody.

靶标

序列相似性 Belongs to the tetrahydrofolate dehydrogenase/cyclohydrolase family.
发展阶段 Expressed only in developing normal tissues.
细胞定位 Mitochondrion.

图片



All lanes : Anti-MTHFD2 antibody [4G7-2G3] (ab56772) at 1/500 dilution

Lane 1 : Wild-type HEK293T cell lysate
Lane 2 : MTHFD2 knockout HEK293T cell lysate
Lane 3 : HepG2 cell lysate
Lane 4 : HeLa cell lysate

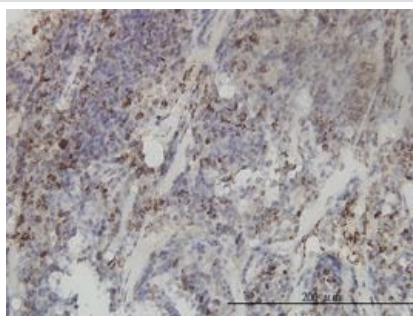
Lysates/proteins at 20 µg per lane.

Secondary
All lanes : Goat Anti-Rabbit IgG H&L (IRDye® 680RD) preadsorbed (ab216777) at 1/10000 dilution

Predicted band size: 37 kDa
Observed band size: 36 kDa

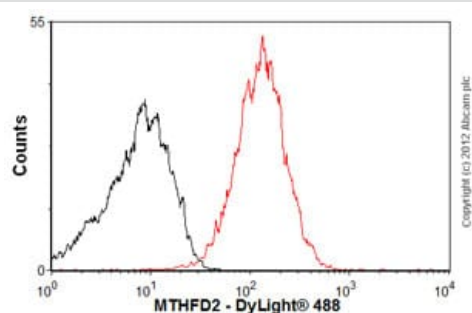
Lanes 1-4: Merged signal (red and green). Green - ab56772 observed at 36 kDa. Red - loading control **ab52901** observed at kDa.

ab56772 Anti-MTHFD2 antibody was shown to specifically react with MTHFD2 in wild-type HEK293T cells. Loss of signal was observed when knockout cell line **ab266383** (knockout cell lysate **ab258528**) was used. Wild-type and MTHFD2 knockout samples were subjected to SDS-PAGE. ab56772 and Anti-beta Tubulin [EP1331Y] - Microtubule Marker (**ab52901**) were incubated at room temperature for 2.5 hours at 1 in 500 dilution and 1 in 20000 dilution respectively. Blots were developed with Goat anti-Rabbit IgG H&L (IRDye® 680RD) preadsorbed (**ab216777**) and Goat anti-Mouse IgG H&L (IRDye® 800CW) preadsorbed (**ab216772**) secondary antibodies at 1 in 20000 dilution for 1 hour at room temperature before imaging.



Immunohistochemistry (Formalin/PFA-fixed paraffin-embedded sections) - Anti-MTHFD2 antibody [4G7-2G3] (ab56772)

MTHFD2 antibody (ab56772) used in immunohistochemistry at 3µg/ml on formalin fixed and paraffin embedded human lymphoma tissue.

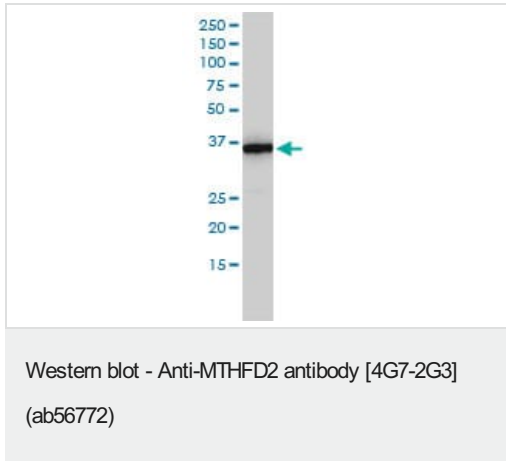


Flow Cytometry - Anti-MTHFD2 antibody [4G7-2G3] (ab56772)

Overlay histogram showing HepG2 cells stained with ab56772 (red line). The cells were fixed with 4% paraformaldehyde (10 min) and then permeabilized with 0.1% PBS-Tween for 20 min. The cells were then incubated in 1x PBS / 10% normal goat serum / 0.3M glycine to block non-specific protein-protein interactions followed by the antibody (ab56772, 1µg/1x10⁶ cells) for 30 min at 22°C. The secondary antibody used was DyLight® 488 goat anti-mouse IgG (H+L) (**ab96879**) at 1/500 dilution for 30 min at 22°C. Isotype control antibody (black line) was mouse IgG2a [ICIG2A] (**ab91361**, 1µg/1x10⁶ cells) used under the same conditions. Acquisition of >5,000 events was performed. This antibody gave a positive signal in HepG2 cells fixed with 80% methanol (5 min)/permeabilized with 0.1% PBS-Tween for 20 min used under

the same conditions.

This image was generated using the ascites version of the product.



MTHFD2 antibody (ab56772) at 1 µg/lane + HepG2 cell lysate at 25 µg/lane.

This image was generated using the ascites version of the product.

Please note: All products are "FOR RESEARCH USE ONLY. NOT FOR USE IN DIAGNOSTIC PROCEDURES"

Our Abpromise to you: Quality guaranteed and expert technical support

- Replacement or refund for products not performing as stated on the datasheet
- Valid for 12 months from date of delivery
- Response to your inquiry within 24 hours
- We provide support in Chinese, English, French, German, Japanese and Spanish
- Extensive multi-media technical resources to help you
- We investigate all quality concerns to ensure our products perform to the highest standards

If the product does not perform as described on this datasheet, we will offer a refund or replacement. For full details of the Abpromise, please visit <https://www.abcam.cn/abpromise> or contact our technical team.

Terms and conditions

- Guarantee only valid for products bought direct from Abcam or one of our authorized distributors