

Anti-MTHFD1 antibody ab70203

6 References [2 图像](#)

概述

产品名称	Anti-MTHFD1抗体
描述	小鼠多克隆抗体to MTHFD1
宿主	Mouse
经测试应用	适用于: WB
种属反应性	与反应: Human
免疫原	Recombinant full length protein within Human MTHFD1. The exact immunogen sequence used to generate this antibody is proprietary information. If additional detail on the immunogen is needed to determine the suitability of the antibody for your needs, please contact our Scientific Support team to discuss your requirements.
阳性对照	MTHFD1 transfected 293T cell lysate, human placenta cell lysate
常规说明	<p>The Life Science industry has been in the grips of a reproducibility crisis for a number of years. Abcam is leading the way in addressing this with our range of recombinant monoclonal antibodies and knockout edited cell lines for gold-standard validation. Please check that this product meets your needs before purchasing.</p> <p>If you have any questions, special requirements or concerns, please send us an inquiry and/or contact our Support team ahead of purchase. Recommended alternatives for this product can be found below, along with publications, customer reviews and Q&As</p>

性能

形式	Liquid
存放说明	Shipped at 4°C. Upon delivery aliquot and store at -20°C or -80°C. Avoid repeated freeze / thaw cycles.
存储溶液	pH: 7.40 Constituent: 100% PBS
纯度	Protein G purified
克隆	多克隆
同种型	IgG

应用

The Abpromise guarantee

Abpromise™承诺保证使用ab70203于以下的经测试应用

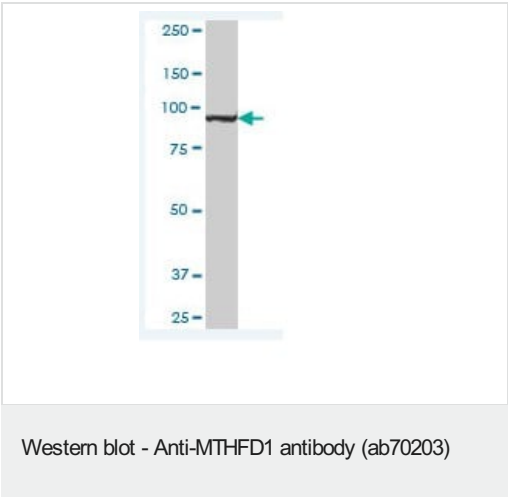
“应用说明”部分 下显示的仅为推荐的起始稀释度;实际最佳的稀释度/浓度应由使用者检定。

应用	Ab评论	说明
WB		1/500 - 1/1000. Detects a band of approximately 95 kDa (predicted molecular weight: 102 kDa).

靶标

组织特异性	Ubiquitous.
通路	One-carbon metabolism; tetrahydrofolate interconversion.
疾病相关	Defects in MTHFD1 may be a cause of susceptibility to folate-sensitive neural tube defects (folate-sensitive NTD) [MIM:601634]. The most common NTDs are open spina bifida (myelomeningocele) and anencephaly. Genetic defects in MTHFD1 may affect the risk of spina bifida via the maternal rather than the embryonic genotype. Genetic variation in MTHFD1 could be associated with susceptibility to colorectal cancer (CRC) [MIM:114500].
序列相似性	In the N-terminal section; belongs to the tetrahydrofolate dehydrogenase/cyclohydrolase family. In the C-terminal section; belongs to the formate--tetrahydrofolate ligase family.
结构域	This trifunctional enzyme consists of two major domains: an N-terminal part containing the methylene-THF dehydrogenase and cyclohydrolase activities and a larger C-terminal part containing formyl-THF synthetase activity.
细胞定位	Cytoplasm.

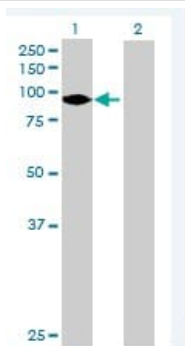
图片



Anti-MTHFD1 antibody (ab70203) at 1/500 dilution + human placenta at 25 µg

Secondary
Goat Anti-Mouse IgG (H&L)-HRP Conjugate at 1/2500 dilution

Predicted band size: 102 kDa
Observed band size: 95 kDa



Western blot - Anti-MTHFD1 antibody (ab70203)

All lanes : Anti-MTHFD1 antibody (ab70203) at 1/500 dilution

Lane 1 : MTHFD1 transfected 293T cell lysate

Lane 2 : non transfected 293T cell lysate

Lysates/proteins at 25 µg per lane.

Secondary

All lanes : Goat Anti-Mouse IgG (H&L)-HRP Conjugate at 1/2500 dilution

Predicted band size: 102 kDa

Observed band size: 95 kDa

Please note: All products are "FOR RESEARCH USE ONLY. NOT FOR USE IN DIAGNOSTIC PROCEDURES"

Our Abpromise to you: Quality guaranteed and expert technical support

- Replacement or refund for products not performing as stated on the datasheet
- Valid for 12 months from date of delivery
- Response to your inquiry within 24 hours
- We provide support in Chinese, English, French, German, Japanese and Spanish
- Extensive multi-media technical resources to help you
- We investigate all quality concerns to ensure our products perform to the highest standards

If the product does not perform as described on this datasheet, we will offer a refund or replacement. For full details of the Abpromise, please visit <https://www.abcam.cn/abpromise> or contact our technical team.

Terms and conditions

- Guarantee only valid for products bought direct from Abcam or one of our authorized distributors