

# Anti-MTFR1 antibody ab198192

[1 References](#) [2 图像](#)

### 概述

---

产品名称	Anti-MTFR1抗体
描述	兔多克隆抗体to MTFR1
宿主	Rabbit
经测试应用	适用于: IHC-P, WB
种属反应性	与反应: Human
免疫原	Recombinant fragment (GST-tag) within Human MTFR1 (internal sequence). The exact immunogen sequence used to generate this antibody is proprietary information. If additional detail on the immunogen is needed to determine the suitability of the antibody for your needs, please <b>contact</b> our Scientific Support team to discuss your requirements. Database link: <a href="#">Q15390</a>
阳性对照	A549, HT-29, A172 cell lysates, Human thyroid cancer tissue
常规说明	<p>The Life Science industry has been in the grips of a reproducibility crisis for a number of years. Abcam is leading the way in addressing this with our range of recombinant monoclonal antibodies and knockout edited cell lines for gold-standard validation. Please check that this product meets your needs before purchasing.</p> <p>If you have any questions, special requirements or concerns, please send us an inquiry and/or contact our Support team ahead of purchase. Recommended alternatives for this product can be found below, along with publications, customer reviews and Q&amp;As</p>

### 性能

---

形式	Liquid
存放说明	Shipped at 4°C. Store at +4°C short term (1-2 weeks). Upon delivery aliquot. Store at -20°C long term. Avoid freeze / thaw cycle.
存储溶液	pH: 7.4 Preservative: 0.05% Sodium azide Constituents: 49% PBS, 50% Glycerol (glycerin, glycerine)
纯度	Immunogen affinity purified
克隆	多克隆
同种型	IgG

## 应用

**The Abpromise guarantee**      **Abpromise™** 承诺保证使用 ab198192 于以下的经测试应用

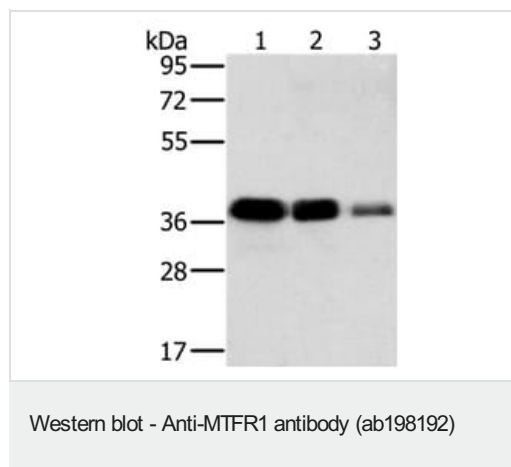
“应用说明”部分 下显示的仅为推荐的起始稀释度;实际最佳的稀释度/浓度应由使用者检定。

应用	Ab评论	说明
IHC-P		1/40 - 1/200.
WB		1/500 - 1/2000. Predicted molecular weight: 37 kDa.

## 靶标

功能	Promote mitochondrial fission.
序列相似性	Belongs to the MTFR1/FAM54 family.
翻译后修饰	Phosphorylated upon DNA damage, probably by ATM or ATR.
细胞定位	Mitochondrion.

## 图片



**All lanes** : Anti-MTFR1 antibody (ab198192) at 1/500 dilution

**Lane 1** : A549 cell lysate

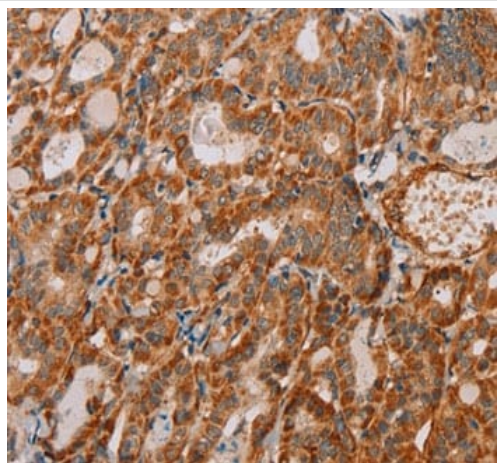
**Lane 2** : HT-29 cell lysate

**Lane 3** : A172 cell lysate

Lysates/proteins at 40 µg per lane.

**Predicted band size:** 37 kDa

**Exposure time:** 5 seconds



Immunohistochemical analysis of formalin fixed paraffin embedded human thyroid cancer tissue labeling MTFR1 with ab198192 at 1/40

Immunohistochemistry (Formalin/PFA-fixed paraffin-embedded sections) - Anti-MTFR1 antibody (ab198192)

**Please note:** All products are "FOR RESEARCH USE ONLY. NOT FOR USE IN DIAGNOSTIC PROCEDURES"

### **Our Abpromise to you: Quality guaranteed and expert technical support**

---

- Replacement or refund for products not performing as stated on the datasheet
- Valid for 12 months from date of delivery
- Response to your inquiry within 24 hours
- We provide support in Chinese, English, French, German, Japanese and Spanish
- Extensive multi-media technical resources to help you
- We investigate all quality concerns to ensure our products perform to the highest standards

If the product does not perform as described on this datasheet, we will offer a refund or replacement. For full details of the Abpromise, please visit <https://www.abcam.cn/abpromise> or contact our technical team.

### **Terms and conditions**

---

- Guarantee only valid for products bought direct from Abcam or one of our authorized distributors