

# Anti-MTCO2 antibody ab91317

★★★★★ [2 Abreviews](#) [11 References](#) [1 图像](#)

### 概述

产品名称	Anti-MTCO2抗体
描述	兔多克隆抗体to MTCO2
宿主	Rabbit
经测试应用	适用于: WB
种属反应性	与反应: Human 预测可用于: Chimpanzee 
免疫原	Synthetic peptide corresponding to Human MTCO2 aa 200 to the C-terminus (C terminal) conjugated to keyhole limpet haemocyanin. (Peptide available as <a href="#">ab102090</a> )
常规说明	<p>The Life Science industry has been in the grips of a reproducibility crisis for a number of years. Abcam is leading the way in addressing this with our range of recombinant monoclonal antibodies and knockout edited cell lines for gold-standard validation. Please check that this product meets your needs before purchasing.</p> <p>If you have any questions, special requirements or concerns, please send us an inquiry and/or contact our Support team ahead of purchase. Recommended alternatives for this product can be found below, along with publications, customer reviews and Q&amp;As</p>

### 性能

形式	Liquid
存放说明	Shipped at 4°C. Store at +4°C short term (1-2 weeks). Upon delivery aliquot. Store at -20°C or -80°C. Avoid freeze / thaw cycle.
存储溶液	pH: 7.40 Preservative: 0.02% Sodium azide Constituent: PBS
纯度	Batches of this product that have a concentration < 1mg/ml may have BSA added as a stabilising agent. If you would like information about the formulation of a specific lot, please contact our scientific support team who will be happy to help.
克隆	Immunogen affinity purified 多克隆

## 应用

## The Abpromise guarantee

Abpromise™承诺保证使用ab91317于以下的经测试应用

“应用说明”部分 下显示的仅为推荐的起始稀释度;实际最佳的稀释度/浓度应由使用者检定。

应用	Ab评论	说明
WB	★★★★★ (1)	Use a concentration of 1 µg/ml. Detects a band of approximately 21 kDa (predicted molecular weight: 25 kDa).

## 靶标

## 功能

Cytochrome c oxidase is the component of the respiratory chain that catalyzes the reduction of oxygen to water. Subunits 1-3 form the functional core of the enzyme complex. Subunit 2 transfers the electrons from cytochrome c via its binuclear copper A center to the bimetallic center of the catalytic subunit 1.

## 疾病相关

Defects in MT-CO2 are a cause of mitochondrial complex IV deficiency (MT-C4D) [MIM:220110]; also known as cytochrome c oxidase deficiency. A disorder of the mitochondrial respiratory chain with heterogeneous clinical manifestations, ranging from isolated myopathy to severe multisystem disease affecting several tissues and organs. Features include hypertrophic cardiomyopathy, hepatomegaly and liver dysfunction, hypotonia, muscle weakness, exercise intolerance, developmental delay, delayed motor development and mental retardation. A subset of patients manifest Leigh syndrome.

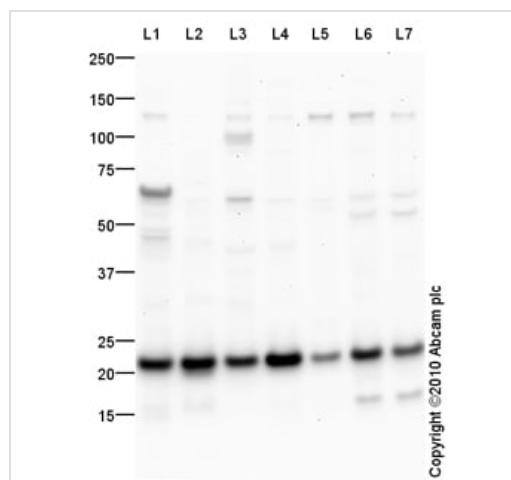
## 序列相似性

Belongs to the cytochrome c oxidase subunit 2 family.

## 细胞定位

Mitochondrion inner membrane.

## 图片



Western blot - Anti-MTCO2 antibody (ab91317)

**All lanes** : Anti-MTCO2 antibody (ab91317) at 1 µg/ml

**Lane 1** : Human liver tissue lysate - total protein ([ab29889](#))

**Lane 2** : Human heart tissue lysate - total protein ([ab29431](#))

**Lane 3** : Human skeletal muscle tissue lysate - total protein ([ab29330](#))

**Lane 4** : Human brain tissue lysate - total protein ([ab29466](#))

**Lane 5** : Human testis tissue lysate - total protein ([ab30257](#))

**Lane 6** : MCF7 (Human breast adenocarcinoma cell line) Whole Cell Lysate

**Lane 7** : HeLa (Human epithelial carcinoma cell line) Whole Cell Lysate

Lysates/proteins at 10 µg per lane.

### **Secondary**

**All lanes :** Goat Anti-Rabbit IgG H&L (HRP) preadsorbed (**ab97080**) at 1/5000 dilution

Developed using the ECL technique.

Performed under reducing conditions.

**Predicted band size:** 25 kDa

**Observed band size:** 21 kDa

**Additional bands at:** 120 kDa, 15 kDa, 65 kDa. We are unsure as to the identity of these extra bands.

**Exposure time:** 2 minutes

**Please note:** All products are "FOR RESEARCH USE ONLY. NOT FOR USE IN DIAGNOSTIC PROCEDURES"

### **Our Abpromise to you: Quality guaranteed and expert technical support**

---

- Replacement or refund for products not performing as stated on the datasheet
- Valid for 12 months from date of delivery
- Response to your inquiry within 24 hours
- We provide support in Chinese, English, French, German, Japanese and Spanish
- Extensive multi-media technical resources to help you
- We investigate all quality concerns to ensure our products perform to the highest standards

If the product does not perform as described on this datasheet, we will offer a refund or replacement. For full details of the Abpromise, please visit <https://www.abcam.cn/abpromise> or contact our technical team.

### **Terms and conditions**

---

- Guarantee only valid for products bought direct from Abcam or one of our authorized distributors