

Anti-MST1/MST2 (phospho T180 + T183) antibody [EPR1467Y] ab76323

重组 RabMAb

★☆☆☆☆ [1 Abreviews](#) [5 References](#) [2 图像](#)

概述

产品名称	Anti-MST1/MST2 (phospho T180 + T183)抗体[EPR1467Y]
描述	兔单克隆抗体[EPR1467Y] to MST1/MST2 (phospho T180 + T183)
宿主	Rabbit
经测试应用	适用于: WB 不适用于: Flow Cyt, ICC/IF, IHC-P or IP
种属反应性	与反应: Human
免疫原	Synthetic peptide. This information is proprietary to Abcam and/or its suppliers.
阳性对照	HeLa cell lysates treated with Calyculin A.
常规说明	This product is a recombinant monoclonal antibody, which offers several advantages including: <ul style="list-style-type: none">- High batch-to-batch consistency and reproducibility- Improved sensitivity and specificity- Long-term security of supply- Animal-free production For more information see here . Our RabMAb [®] technology is a patented hybridoma-based technology for making rabbit monoclonal antibodies. For details on our patents, please refer to RabMAb[®] patents . Mouse, Rat: We have preliminary internal testing data to indicate this antibody may not react with these species. Please contact us for more information.

性能

形式	Liquid
存放说明	Shipped at 4°C. Upon delivery aliquot and store at -20°C. Avoid repeated freeze / thaw cycles.
存储溶液	pH: 7.20 Preservative: 0.05% Sodium azide Constituents: 0.1% BSA, 40% Glycerol (glycerin, glycerine), 9.85% Tris glycine, 50% Tissue culture supernatant
纯度	Protein A purified

克隆 单克隆
克隆编号 EPR1467Y
同种型 IgG

应用

The Abpromise guarantee **Abpromise™** 承诺保证使用ab76323于以下的经测试应用

“应用说明”部分 下显示的仅为推荐的起始稀释度;实际最佳的稀释度/浓度应由使用者检定。

应用	Ab评论	说明
WB	★☆☆☆☆ (1)	1/1000 - 1/2000. Predicted molecular weight: 56 kDa.

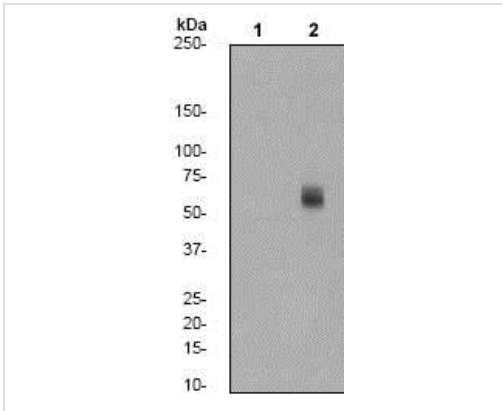
应用说明 Is unsuitable for Flow Cyt, ICC/IF, IHC-P or IP.

靶标

相关性 The human serine/threonine kinase, mammalian STE20 like kinase (MST), is considerably homologous to the budding yeast kinases, SPS1 and STE20, throughout their kinase domains. When stably expressed in HeLa cells, MST highly sensitizes the cells to death receptor mediated apoptosis by accelerating caspase 3 activation. These findings suggest that MST1 and MST2 play a role in apoptosis both upstream and downstream of caspase activation. MST1 is cleaved and activated by caspases during apoptosis and is capable of inducing apoptotic morphological changes such as chromatin condensation upon overexpression. Mammalian Sterile 20 Like 2 (MST2) is most similar to the previously identified MST1 protein kinase (78% identity, 88% similarity). Northern analysis indicates that MST2 mRNA is expressed at high levels in adult kidney, skeletal and placental tissues and at very low levels in adult heart, lung, liver and brain tissues. An in vitro kinase assay indicates that MST2 can phosphorylate an exogenous substrate, as well as itself, and phospho amino acid analysis indicates that it is a serine/threonine protein kinase.

细胞定位 Cytoplasm. Nucleus. Note: The caspase cleaved form cycles between the nucleus and cytoplasm.

图片



Western blot - Anti-MST1/MST2 (phospho T180 + T183) antibody [EPR1467Y] (ab76323)

All lanes : Anti-MST1/MST2 (phospho T180 + T183) antibody [EPR1467Y] (ab76323) at 1/2000 dilution

Lane 1 : HeLa cell lysate, untreated

Lane 2 : HeLa cell lysate treated with Calyculin A.

Lysates/proteins at 10 µg per lane.





Secondary

All lanes : Goat anti-rabbit HRP at 1/1000 dilution

Predicted band size: 56 kDa

Observed band size: 59 kDa

Why choose a recombinant antibody?

 <p>Research with confidence Consistent and reproducible results</p>	 <p>Long-term and scalable supply Recombinant technology</p>
 <p>Success from the first experiment Confirmed specificity</p>	 <p>Ethical standards compliant Animal-free production</p>

Anti-MST1/MST2 (phospho T180 + T183) antibody [EPR1467Y] (ab76323)

Please note: All products are "FOR RESEARCH USE ONLY. NOT FOR USE IN DIAGNOSTIC PROCEDURES"

Our Abpromise to you: Quality guaranteed and expert technical support

- Replacement or refund for products not performing as stated on the datasheet
- Valid for 12 months from date of delivery
- Response to your inquiry within 24 hours
- We provide support in Chinese, English, French, German, Japanese and Spanish
- Extensive multi-media technical resources to help you
- We investigate all quality concerns to ensure our products perform to the highest standards

If the product does not perform as described on this datasheet, we will offer a refund or replacement. For full details of the Abpromise, please visit <https://www.abcam.cn/abpromise> or contact our technical team.

Terms and conditions

- Guarantee only valid for products bought direct from Abcam or one of our authorized distributors