


### Anti-MSK1 (phospho S376) antibody [E375] ab32190

**重组 RabMAb**

★★★★★ **10 Abreviews** **4 References** **6 图像**

#### 概述

<b>产品名称</b>	Anti-MSK1 (phospho S376)抗体[E375]
<b>描述</b>	兔单克隆抗体[E375] to MSK1 (phospho S376)
<b>宿主</b>	Rabbit
<b>经测试应用</b>	<b>适用于:</b> WB, IHC-P, ICC/IF <b>不适用于:</b> Flow Cyt
<b>种属反应性</b>	<b>与反应:</b> Human <b>预测可用于:</b> Rat 
<b>免疫原</b>	Synthetic peptide. This information is proprietary to Abcam and/or its suppliers.
<b>阳性对照</b>	WB: K562 cell lysate. IHC-P Human urinary bladder carcinoma. ICC/IF: HepG2 cells
<b>常规说明</b>	This product is a recombinant monoclonal antibody, which offers several advantages including: <ul style="list-style-type: none"> <li>- High batch-to-batch consistency and reproducibility</li> <li>- Improved sensitivity and specificity</li> <li>- Long-term security of supply</li> <li>- Animal-free production</li> </ul> For more information <a href="#">see here</a> . Our RabMAb <sup>®</sup> technology is a patented hybridoma-based technology for making rabbit monoclonal antibodies. For details on our patents, please refer to <a href="#">RabMAb<sup>®</sup> patents</a> .  Mouse: We have preliminary internal testing data to indicate this antibody may not react with this species. Please contact us for more information.

#### 性能

<b>形式</b>	Liquid
<b>存放说明</b>	Shipped at 4°C. Store at +4°C short term (1-2 weeks). Upon delivery aliquot. Store at -20°C. Avoid freeze / thaw cycle.
<b>存储溶液</b>	pH: 7.20 Preservative: 0.01% Sodium azide Constituents: 49% PBS, 50% Glycerol (glycerin, glycerine), 0.05% BSA
<b>纯度</b>	Protein A purified

克隆	单克隆
克隆编号	E375
同种型	IgG

## 应用

**The Abpromise guarantee**      **Abpromise™** 承诺保证使用ab32190于以下的经测试应用

“应用说明”部分下显示的仅为推荐的起始稀释度;实际最佳的稀释度/浓度应由使用者检定。

应用	Ab评论	说明
WB	★★★★★ (1)	1/1000 - 1/5000. Detects a band of approximately 87 kDa (predicted molecular weight: 90 kDa).
IHC-P	★★★★★ (5)	Use at an assay dependent concentration. Perform heat mediated antigen retrieval with citrate buffer pH 6 before commencing with IHC staining protocol.
ICC/IF	★★★★★ (1)	1/500.

应用说明      Is unsuitable for Flow Cyt.

## 靶标

**功能**      Serine/threonine kinase required for the mitogen or stress-induced phosphorylation of the transcription factors CREB (cAMP response element-binding protein) and ATF1 (activating transcription factor-1). Essential role in the control of RELA transcriptional activity in response to TNF. Directly represses transcription via phosphorylation of 'Ser-1' of histone H2A. Phosphorylates 'Ser-10' of histone H3 in response to mitogenics, stress stimuli and epidermal growth-factor (EGF), which results in the transcriptional activation of several immediate early genes, including proto-oncogenes c-fos/FOS and c-jun/JUN. May also phosphorylate 'Ser-28' of histone H3. Mediates the mitogen- and stress-induced phosphorylation of high mobility group protein 14 (HMG-14).

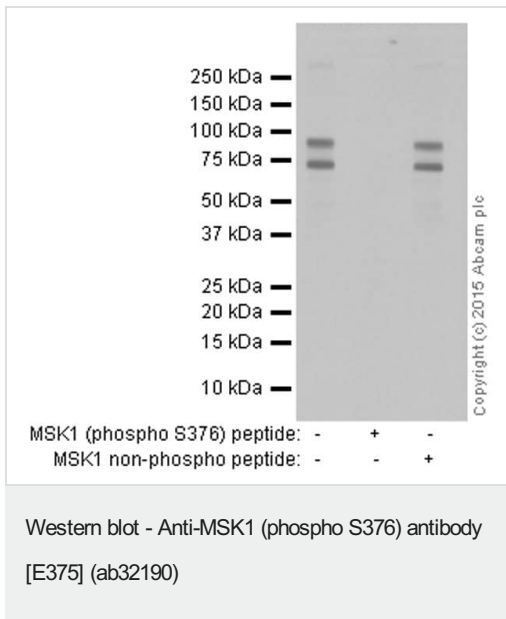
**组织特异性**      Widely expressed with high levels in heart, brain and placenta. Less abundant in lung, kidney and liver.

**序列相似性**      Belongs to the protein kinase superfamily. AGC Ser/Thr protein kinase family. S6 kinase subfamily.  
Contains 1 AGC-kinase C-terminal domain.  
Contains 2 protein kinase domains.

**翻译后修饰**      Ser-376 and Thr-581 phosphorylation is required for kinase activity. Ser-376 and Ser-212 are autophosphorylated by the C-terminal kinase domain, and their phosphorylation is essential for the catalytic activity of the N-terminal kinase domain.

**细胞定位**      Nucleus. Cytoplasm. Predominantly nuclear. Partially cytoplasmic.

## 图片



**All lanes** : Anti-MSK1 (phospho S376) antibody [E375] (ab32190) at 1/2000 dilution

**Lane 1** : HEK293 (human embryonic kidney) cells were treated with Epidermal growth factor whole cell lysates

**Lane 2** : HEK293 (human embryonic kidney) cells were treated with Epidermal growth factor whole cell lysates with MSK1 (phospho S376) peptide

**Lane 3** : HEK293 (human embryonic kidney) cells were treated with Epidermal growth factor whole cell lysates with MSK1 non-phospho peptide

Lysates/proteins at 10 µg per lane.

### Secondary

**All lanes** : Goat Anti-Rabbit IgG H&L (HRP) ([ab97051](#)) at 1/20000 dilution

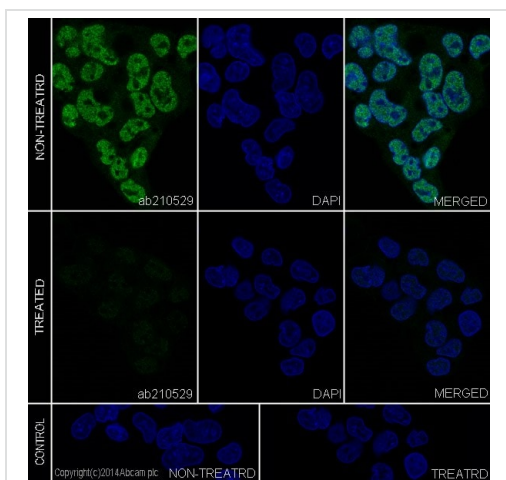
**Predicted band size:** 90 kDa

**Exposure time:** 10 seconds

Blocking/Diluting buffer: 5% NFDM/TBST

**Observed band:** 90, 80 kDa.

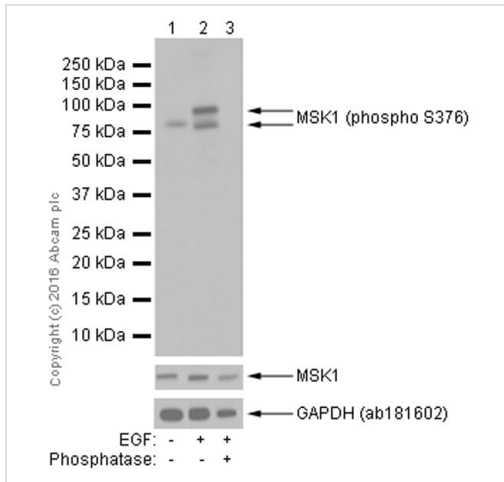
The 80 kDa band may represent isoform 2 or isoform 3 of MSK1.



Immunocytochemistry/ Immunofluorescence - Anti-MSK1 (phospho S376) antibody [E375] (ab32190)

Immunocytochemistry analysis of HepG2 (human hepatocellular carcinoma epithelial cell) cells labeling MSK1 (phospho S376) with ab32190 at 1/500 (4 µg/mL). Cells were fixed with 4% Paraformaldehyde and permeabilised with 0.1% tritonX-100. [ab150077](#) AlexaFluor®488 Goat anti-Rabbit at 1/1000 (2 µg/mL) was used as the secondary antibody. DAPI (blue) was used as Nuclear counterstain.

Confocal image showing decreased nuclear staining in HepG2 cells treated with Alkaline Phosphatase (371 1h).



Western blot - Anti-MSK1 (phospho S376) antibody [E375] (ab32190)

**All lanes :** Anti-MSK1 (phospho S376) antibody [E375] (ab32190) at 1/2000 dilution

**Lane 1 :** Untreated HEK293 (human embryonic kidney) whole cell lysate

**Lane 2 :** HEK293 (human embryonic kidney) cells were treated with Epidermal growth factor (EGF) whole cell lysate

**Lane 3 :** HEK293 (human embryonic kidney) cells were treated with Epidermal growth factor (EGF) whole cell lysate. Then the membrane was incubated with Alkaline phosphatase.

Lysates/proteins at 10 µg per lane.

### Secondary

**All lanes :** Goat Anti-Rabbit IgG H&L (HRP) ([ab97051](#)) at 1/20000 dilution

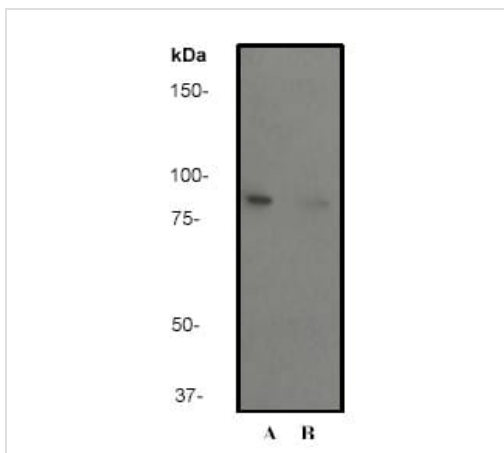
**Predicted band size:** 90 kDa

**Exposure time:** 5 seconds

Blocking/Diluting buffer 5% NFDm/TBST.

**Observed band:** 90, 80 kDa.

The 80 kDa band may represent isoform 2 or isoform 3 of MSK1.



Western blot - Anti-MSK1 (phospho S376) antibody [E375] (ab32190)

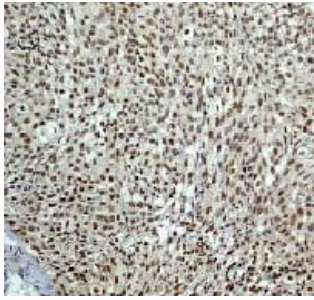
**All lanes :** Anti-MSK1 (phospho S376) antibody [E375] (ab32190) at 1/5000 dilution

**Lane 1 :** Untreated K562 cell lysate

**Lane 2 :** K562 cell lysate treated with Alkaline

**Predicted band size:** 90 kDa

**Observed band size:** 87 kDa



Immunohistochemistry (Formalin/PFA-fixed paraffin-embedded sections) - Anti-MSK1 (phospho S376) antibody [E375] (ab32190)

Ab32190, at a dilution of 1/50, staining MSK1 in paraffin embedded human urinary bladder carcinoma tissue by Immunohistochemistry.

Perform heat mediated antigen retrieval with citrate buffer pH 6 before commencing with IHC staining protocol.

### Why choose a recombinant antibody?



Anti-MSK1 (phospho S376) antibody [E375] (ab32190)

**Please note:** All products are "FOR RESEARCH USE ONLY. NOT FOR USE IN DIAGNOSTIC PROCEDURES"

### Our Abpromise to you: Quality guaranteed and expert technical support

- Replacement or refund for products not performing as stated on the datasheet
- Valid for 12 months from date of delivery
- Response to your inquiry within 24 hours
- We provide support in Chinese, English, French, German, Japanese and Spanish
- Extensive multi-media technical resources to help you
- We investigate all quality concerns to ensure our products perform to the highest standards

If the product does not perform as described on this datasheet, we will offer a refund or replacement. For full details of the Abpromise, please visit <https://www.abcam.cn/abpromise> or contact our technical team.

### Terms and conditions

- Guarantee only valid for products bought direct from Abcam or one of our authorized distributors