

Anti-MSI2 antibody [EP1305Y] ab76148






[1 Abreviews](#)
[45 References](#)
[12 图像](#)

概述

产品名称	Anti-MSI2抗体[EP1305Y]
描述	兔单克隆抗体[EP1305Y] to MSI2
宿主	Rabbit
经测试应用	适用于: Flow Cyt (Intra), IP, ICC/IF, WB, IHC-P
种属反应性	与反应: Mouse, Rat, Human
免疫原	Synthetic peptide. This information is proprietary to Abcam and/or its suppliers.
表位	Based on the immunogen sequence for this antibody, it is not predicted to detect the shorter isoforms of MSI2.
阳性对照	WB: HeLa, A549 MCF7, HAP1, Rat brain, Human brain, A549 , SW480 and T47D cell lysates IHC-P: Human placenta, Human bladder carcinoma Tissue IP: T-47D cell lysate. ICC/IF: PC12 and MCF7 cells Flow Cyt (intra): T-47D and HeLa cells.
常规说明	<p>This product is a recombinant monoclonal antibody, which offers several advantages including:</p> <ul style="list-style-type: none"> - High batch-to-batch consistency and reproducibility - Improved sensitivity and specificity - Long-term security of supply - Animal-free production <p>For more information see here.</p> <p>Our RabMAb[®] technology is a patented hybridoma-based technology for making rabbit monoclonal antibodies. For details on our patents, please refer to RabMAb[®] patents.</p>

性能

形式	Liquid
存放说明	Shipped at 4°C. Store at +4°C short term (1-2 weeks). Upon delivery aliquot. Store at -20°C. Avoid freeze / thaw cycle.
存储溶液	<p>pH: 7.20</p> <p>Preservative: 0.01% Sodium azide</p> <p>Constituents: PBS, 0.05% BSA, 40% Glycerol (glycerin, glycerine)</p>
纯度	Protein A purified
克隆	单克隆

克隆编号	EP1305Y
同种型	IgG

应用

The Abpromise guarantee **Abpromise™**承诺保证使用ab76148于以下的经测试应用

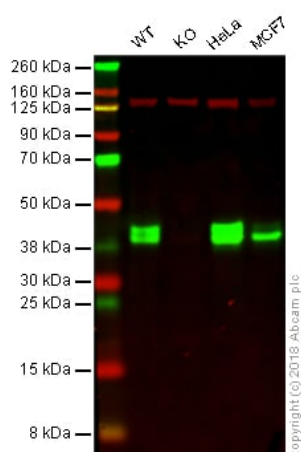
“应用说明”部分 下显示的仅为推荐的起始稀释度;实际最佳的稀释度/浓度应由使用者检定。

应用	Ab评论	说明
Flow Cyt (Intra)		1/100. ab172730 - Rabbit monoclonal IgG, is suitable for use as an isotype control with this antibody. For unpurified use at 1/30
IP		1/50.
ICC/IF		1/100.
WB		1/1000 - 1/2000. Detects a band of approximately 35 kDa (predicted molecular weight: 35 kDa).
IHC-P	★★★★★ (1)	1/500. Perform heat mediated antigen retrieval via the pressure cooker method before commencing with IHC staining protocol. The mouse and rat recommendation is based on the WB results. We do not guarantee IHC-P for mouse and rat. See IHC antigen retrieval protocols . For unpurified use at 1/100 - 1/250.

靶标

功能	RNA binding protein that regulates the expression of target mRNAs at the translation level. May play a role in the proliferation and maintenance of stem cells in the central nervous system.
组织特异性	Ubiquitous; detected at low levels.
疾病相关	Note=Chromosomal aberrations involving MSI2 may contribute to disease progression in chronic myeloid leukemia. Translocation t(7;17)(p15;q23) with HOXA9; translocation t(7;17)(q32-34;q23).
序列相似性	Belongs to the Musashi family. Contains 2 RRM (RNA recognition motif) domains.
翻译后修饰	Phosphorylated.
细胞定位	Cytoplasm. Associated with polysomes.

图片



Western blot - Anti-MSI2 antibody [EP1305Y]
(ab76148)

All lanes : Anti-MSI2 antibody [EP1305Y] (ab76148) at 1/1000 dilution

Lane 1 : Wild-type HAP1 whole cell lysate

Lane 2 : MSI2 knockout HAP1 whole cell lysate

Lane 3 : HeLa whole cell lysate

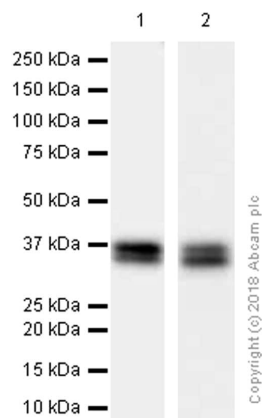
Lane 4 : MCF7 whole cell lysate

Lysates/proteins at 20 µg per lane.

Predicted band size: 35 kDa

Lanes 1 -4: Merged signal (red and green). Green - ab76148 observed at 40 kDa. Red - loading control, **ab18058**, observed at 130 kDa.

ab76148 was shown to specifically react with MSI2 in wild-type HAP1 cells as signal was lost in MSI2 knockout cells. Wild-type and MSI2 knockout samples were subjected to SDS-PAGE. Ab76148 and **ab18058** (Mouse anti-Vinculin loading control) were incubated overnight at 4°C at 1/1000 dilution and 1/20000 dilution respectively. Blots were developed with Goat anti-Rabbit IgG H&L (IRDye® 800CW) preabsorbed **ab216773** and Goat anti-Mouse IgG H&L (IRDye® 680RD) preabsorbed **ab216776** secondary antibodies at 1/20000 dilution for 1 hour at room temperature before imaging.



Western blot - Anti-MSI2 antibody [EP1305Y]
(ab76148)

All lanes : Anti-MSI2 antibody [EP1305Y] (ab76148) at 1/1000 dilution

Lane 1 : Mouse brain lysates

Lane 2 : Rat brain lysates

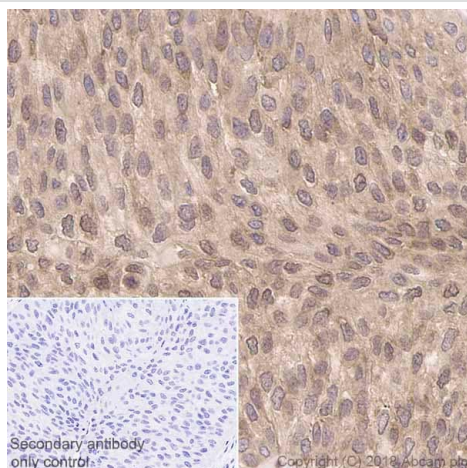
Lysates/proteins at 15 µg per lane.

Secondary

All lanes : Goat Anti-Rabbit IgG H&L (HRP) ([ab97051](#)) at 1/20000 dilution

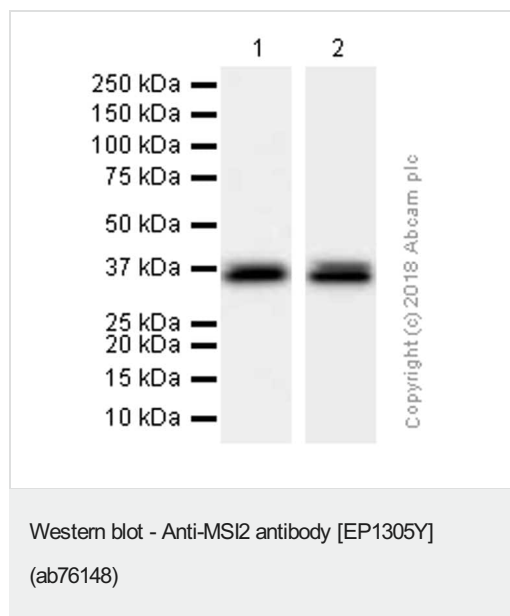
Predicted band size: 35 kDa

Observed band size: 35 kDa



Immunohistochemistry (Formalin/PFA-fixed paraffin-embedded sections) - Anti-MSI2 antibody
[EP1305Y] (ab76148)

Immunohistochemistry (Formalin/PFA-fixed paraffin-embedded sections) analysis of Human bladder carcinoma tissue sections labeling MSI2 with purified ab76148 at 1:500 dilution (2.14 µg/ml). Heat mediated antigen retrieval was performed using [ab93684](#) (Tris/EDTA buffer, pH 9.0). ImmunoHistoProbe one step HRP Polymer (ready to use) was used as the secondary antibody. Negative control: PBS instead of the primary antibody. Hematoxylin was used as a counterstain.



All lanes : Anti-MSI2 antibody [EP1305Y] (ab76148) at 1/1000 dilution

Lane 1 : T-47D (Human ductal breast epithelial tumor epithelial cell) whole cell lysates

Lane 2 : A549 (Human lung carcinoma epithelial cell) whole cell lysates

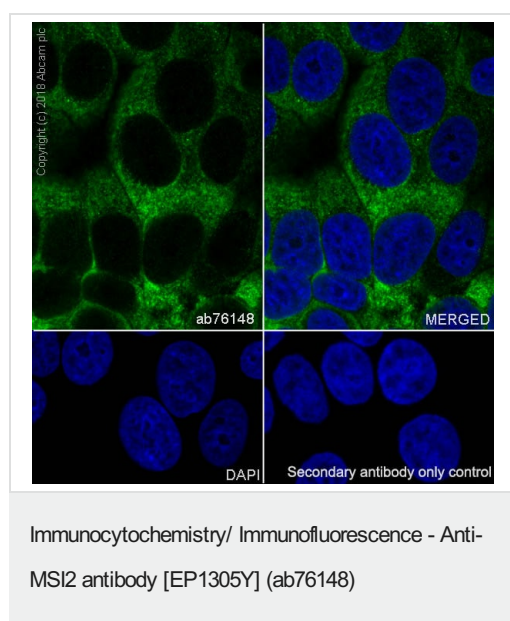
Lysates/proteins at 15 µg per lane.

Secondary

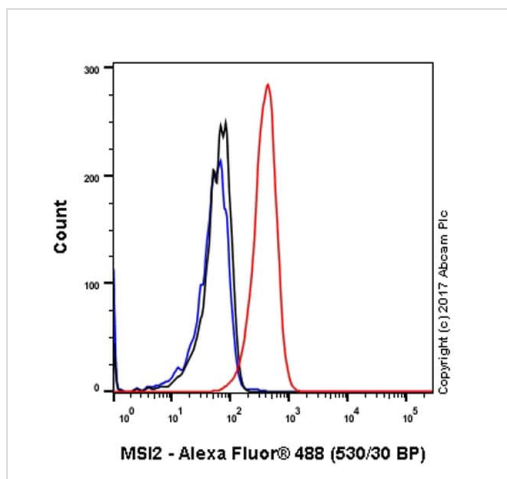
All lanes : Goat Anti-Rabbit IgG H&L (HRP) ([ab97051](#)) at 1/20000 dilution

Predicted band size: 35 kDa

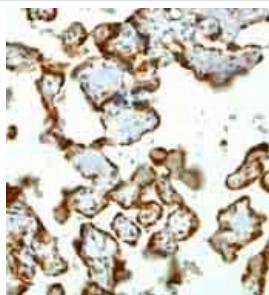
Observed band size: 35 kDa



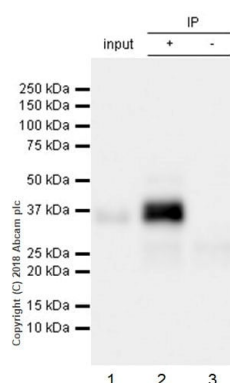
Immunocytochemistry/ Immunofluorescence analysis of MCF7 (Human breast adenocarcinoma epithelial cell) cells labeling MSI2 with purified ab76148 at 1:100 dilution (10 µg/ml). Cells were fixed in 4% Paraformaldehyde and permeabilized with 0.1% tritonX-100. Cells were counterstained with None. Goat anti rabbit IgG (Alexa Fluor® 488, [ab150077](#)) was used as the secondary antibody at 1:1000 (2 µg/ml) dilution. DAPI nuclear counterstain. PBS instead of the primary antibody was used as the secondary antibody only control.



Flow Cytometry (Intracellular) - Anti-MSI2 antibody
[EP1305Y] (ab76148)



Immunohistochemistry (Formalin/PFA-fixed paraffin-
embedded sections) - Anti-MSI2 antibody
[EP1305Y] (ab76148)



Immunoprecipitation - Anti-MSI2 antibody
[EP1305Y] (ab76148)

Intracellular Flow Cytometry analysis of T-47D (Human ductal breast epithelial tumor epithelial cell) cells labeling MSI2 with purified ab76148 at 1/100 dilution (10 µg/ml) (red). Cells were fixed with 4% Paraformaldehyde. A Goat anti rabbit IgG (Alexa Fluor® 488, **ab150077**) secondary antibody was used at 1/2000. Isotype control - Rabbit monoclonal IgG (Black). Unlabeled control - Cell without incubation with primary antibody and secondary antibody (Blue).

Immunohistochemical analysis of paraffin-embedded human placenta with ab76148 at 1/100-1/250 dilution.

Heat mediated antigen retrieval was performed via the pressure cooker method before commencing with IHC staining protocol.

All lanes : Anti-MSI2 antibody [EP1305Y] (ab76148) at 1/1000 dilution

Lane 1 : T-47D (Human ductal breast epithelial tumor epithelial cell) whole cell lysate at 10 µg with 5% NFDM/TBST

Lane 2 : T-47D whole cell lysate. ab76148 use as the capture antibody at 1:50 dilution. with 5% NFDM/TBST

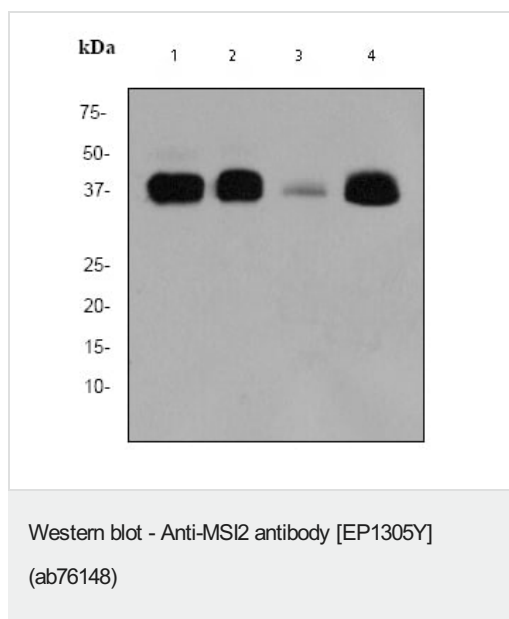
Lane 3 : T-47D whole cell lysate. **ab172730** use as the capture antibody at 1:50 dilution. with 5% NFDM/TBST

Secondary

All lanes : VeriBlot for IP Detection Reagent (HRP) (**ab131366**) at 1/5000 dilution (VeriBlot for IP secondary antibody (HRP))

Observed band size: 35 kDa

Exposure time: 5 seconds



All lanes : Anti-MSI2 antibody [EP1305Y] (ab76148) at 1/2000 dilution

Lane 1 : Rat brain cell lysates

Lane 2 : Human brain cell lysates

Lane 3 : SW480 cell lysates

Lane 4 : T47D cell lysates

Lysates/proteins at 10 µg per lane.

Secondary

All lanes : HRP labelled goat anti-rabbit at 1/2000 dilution

Predicted band size: 35 kDa

Observed band size: 35 kDa

Immunocytochemistry/ Immunofluorescence - Anti-MSI2 antibody [EP1305Y] (ab76148)

ICC/IF image of ab76148 stained PC12 cells. The cells were 4% formaldehyde fixed (10 min) and then incubated in 1%BSA / 10% normal goat serum / 0.3M glycine in 0.1% PBS-Tween for 1h to permeabilise the cells and block non-specific protein-protein interactions. The cells were then incubated with the antibody (ab76148, 1µg/ml) overnight at +4°C. The secondary antibody (green) was Alexa Fluor® 488 goat anti-rabbit IgG (H+L) used at a 1/1000 dilution for 1h. Alexa Fluor® 594 WGA was used to label plasma membranes (red) at a 1/200 dilution for 1h. DAPI was used to stain the cell nuclei (blue) at a concentration of 1.43µM.

Flow Cytometry (Intracellular) - Anti-MSI2 antibody [EP1305Y] (ab76148)

Overlay histogram showing HeLa cells stained with ab76148 (red line). The cells were fixed with 4% paraformaldehyde (10 min) and then permeabilized with 0.1% PBS-Tween for 20 min. The cells were then incubated in 1x PBS / 10% normal goat serum / 0.3M glycine to block non-specific protein-protein interactions followed by the antibody (ab76148, 1/100 dilution) for 30 min at 22°C. The secondary antibody used was DyLight® 488 goat anti-rabbit IgG (H+L) (**ab96899**) at 1/500 dilution for 30 min at 22°C. Isotype control antibody (black line) was rabbit IgG (monoclonal) (1µg/1x10⁶ cells) used under the same conditions. Acquisition of >5,000 events was performed. This antibody gave a positive result in HeLa cells fixed with 80% methanol (5 min)/permeabilized in 0.1% PBS-Tween for 20 min used under the same conditions.

Why choose a recombinant antibody?



Research with confidence
Consistent and reproducible results



Long-term and scalable supply
Recombinant technology



Success from the first experiment
Confirmed specificity



Ethical standards compliant
Animal-free production

Anti-MSI2 antibody [EP1305Y] (ab76148)

Please note: All products are "FOR RESEARCH USE ONLY. NOT FOR USE IN DIAGNOSTIC PROCEDURES"

Our Abpromise to you: Quality guaranteed and expert technical support

- Replacement or refund for products not performing as stated on the datasheet
- Valid for 12 months from date of delivery
- Response to your inquiry within 24 hours
- We provide support in Chinese, English, French, German, Japanese and Spanish
- Extensive multi-media technical resources to help you
- We investigate all quality concerns to ensure our products perform to the highest standards

If the product does not perform as described on this datasheet, we will offer a refund or replacement. For full details of the Abpromise, please visit <https://www.abcam.cn/abpromise> or contact our technical team.

Terms and conditions

- Guarantee only valid for products bought direct from Abcam or one of our authorized distributors