

Anti-MSH3 antibody ab69619

[2 References](#) [1 图像](#)

概述

产品名称	Anti-MSH3抗体
描述	兔多克隆抗体to MSH3
宿主	Rabbit
经测试应用	适用于: WB
种属反应性	与反应: Human
免疫原	Synthetic peptide derived from an internal region of human MSH3.
阳性对照	Extracts from HUVEC cells.
常规说明	<p>The Life Science industry has been in the grips of a reproducibility crisis for a number of years. Abcam is leading the way in addressing this with our range of recombinant monoclonal antibodies and knockout edited cell lines for gold-standard validation. Please check that this product meets your needs before purchasing.</p> <p>If you have any questions, special requirements or concerns, please send us an inquiry and/or contact our Support team ahead of purchase. Recommended alternatives for this product can be found below, along with publications, customer reviews and Q&As</p>

性能

形式	Liquid
存放说明	Shipped at 4°C. Upon delivery aliquot and store at -20°C. Avoid freeze / thaw cycles.
存储溶液	pH: 7.40 Preservative: 0.02% Sodium azide Constituents: 50% Glycerol (glycerin, glycerine), 0.87% Sodium chloride, PBS
纯度	Without Mg ²⁺ and Ca ²⁺
克隆	Immunogen affinity purified
同种型	多克隆 IgG

应用

The Abpromise guarantee

Abpromise™ 承诺保证使用 ab69619 于以下的经测试应用

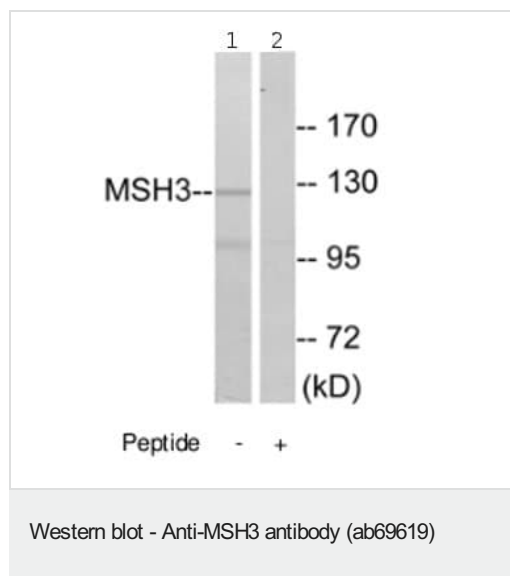
“应用说明”部分下显示的仅为推荐的起始稀释度；实际最佳的稀释度/浓度应由使用者检定。

应用	Ab评论	说明
WB		1/500 - 1/1000. Detects a band of approximately 127 kDa (predicted molecular weight: 127 kDa).

靶标

功能	Component of the post-replicative DNA mismatch repair system (MMR). Heterodimerizes with MSH2 to form MutS beta which binds to DNA mismatches thereby initiating DNA repair. When bound, the MutS beta heterodimer bends the DNA helix and shields approximately 20 base pairs. MutS beta recognizes large insertion-deletion loops (IDL) up to 13 nucleotides long. After mismatch binding, forms a ternary complex with the MutL alpha heterodimer, which is thought to be responsible for directing the downstream MMR events, including strand discrimination, excision, and resynthesis.
疾病相关	Defects in MSH3 are a cause of susceptibility to endometrial cancer (ENDMC) [MIM:608089].
序列相似性	Belongs to the DNA mismatch repair mutS family. MSH3 subfamily.
翻译后修饰	Phosphorylated upon DNA damage, probably by ATM or ATR.

图片



All lanes : Anti-MSH3 antibody (ab69619) at 1/500 dilution

Lane 1 : Extracts from HUVEC cells

Lane 2 : Extracts from HUVEC cells with immunising peptide at 5 µg

Lysates/proteins at 5 µg per lane.

Predicted band size: 127 kDa

Observed band size: 127 kDa

Additional bands at: 100 kDa. We are unsure as to the identity of these extra bands.

Please note: All products are "FOR RESEARCH USE ONLY. NOT FOR USE IN DIAGNOSTIC PROCEDURES"

Our Abpromise to you: Quality guaranteed and expert technical support

- Replacement or refund for products not performing as stated on the datasheet
- Valid for 12 months from date of delivery

- Response to your inquiry within 24 hours
- We provide support in Chinese, English, French, German, Japanese and Spanish
- Extensive multi-media technical resources to help you
- We investigate all quality concerns to ensure our products perform to the highest standards

If the product does not perform as described on this datasheet, we will offer a refund or replacement. For full details of the Abpromise, please visit <https://www.abcam.cn/abpromise> or contact our technical team.

Terms and conditions

- Guarantee only valid for products bought direct from Abcam or one of our authorized distributors